

ELEV 23
NZAA
AUCKLAND CONTROL: 123.9 134.0
AUCKLAND APPROACH: 124.3 129.6

AUCKLAND

RNAV STAR RWY 23L (3)

TOWER: 118.7 120.95 ATIS: 127.8 127.0

**Navigation requirement: RNAV 1
GNSS required**

RWY 23L BASIV SIX CHARLIE ARRIVAL – RNAV (BASIV6C)

TRANSITIONS:

- ELNOS – From ELNOS track 138° to BASIV
- SALAG – From SALAG track 116° to BASIV
- UPLAR – From UPLAR track 094° to BASIV

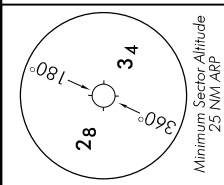
Expect radar vectors when M106 active

- From BASIV, track 115° to BONKO
- Cross BONKO at or above 8000 ft, MAX IAS 280 kt
- Track 114° to DOMRI
- Cross DOMRI MAX IAS 240 kt
- Track 052° to KIDAG
- Cross KIDAG at or above 6000 ft, MAX IAS 210 kt

ALL ARRIVALS:

- 2 minutes prior to the NZZZ/NZZC FIR boundary contact Auckland Control 123.9 MHz reporting position and level.
- ATC will issue appropriate STAR/Transition. Descend via STAR/Transition to ATC cleared level.
- If unable RNAV, expect radar vectors or alternative routing.

A-ARNVSTAR23L-3-N



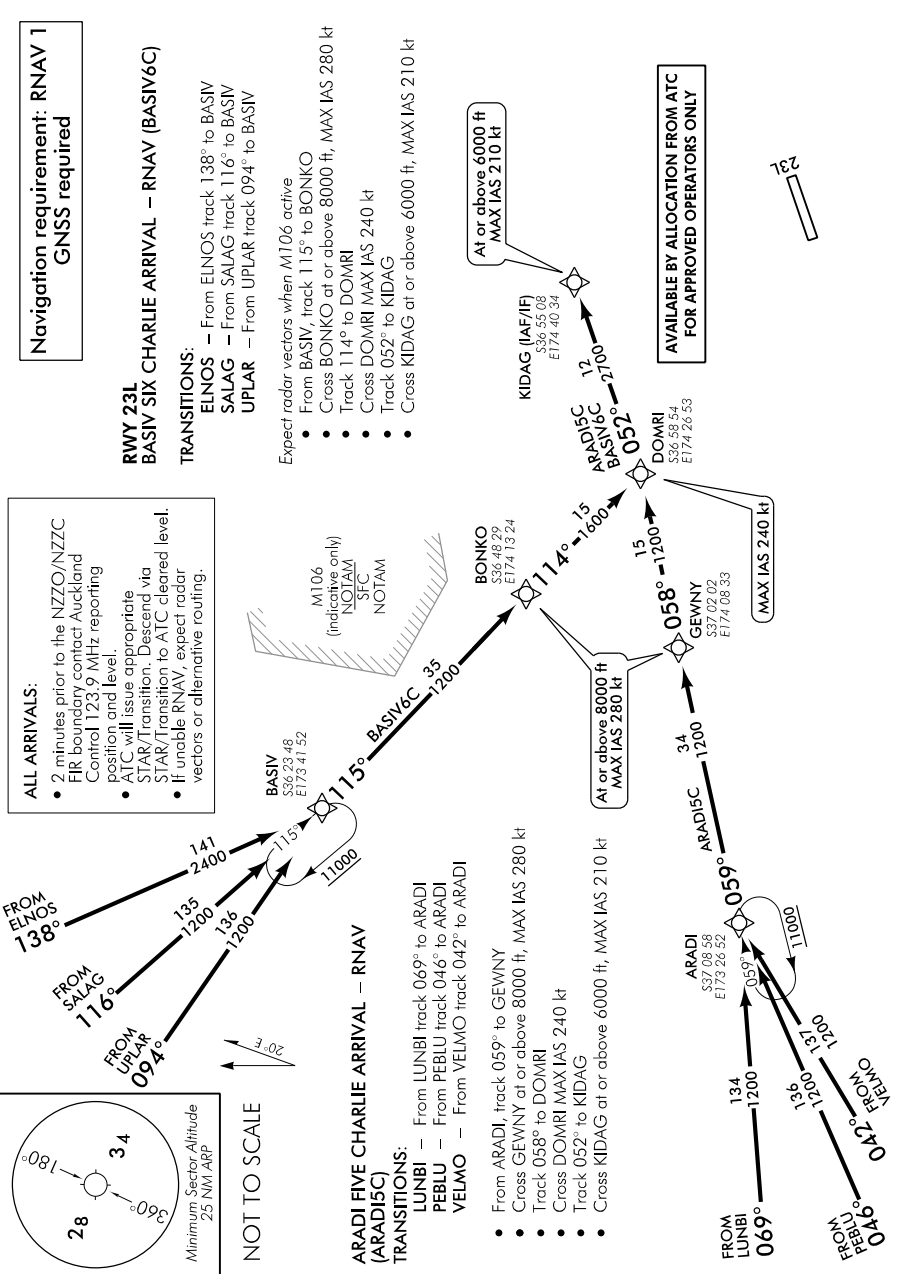
NOT TO SCALE

ARADI FIVE CHARLIE ARRIVAL – RNAV (ARADI5C)

TRANSITIONS:

- LUNBI – From LUNBI track 069° to ARADI
- PEBLU – From PEBLU track 046° to ARADI
- VELMO – From VELMO track 042° to ARADI

- From ARADI, track 059° to GEWNY
- Cross GEWNY at or above 8000 ft, MAX IAS 280 kt
- Track 058° to DOMRI
- Cross DOMRI MAX IAS 240 kt
- Track 052° to KIDAG
- Cross KIDAG at or above 6000 ft, MAX IAS 210 kt



Changes from 9 NOV 17: Pagination, All Arrivals text updated.

Effective: 1 FEB 18

ELEV 23

NZAA

AUCKLAND CONTROL: 123.9 134.0

AUCKLAND APPROACH: 124.3 129.6

TOWER: 118.7 120.95

AUCKLAND

RNAV STAR RWY 23L (4)

ATIS: 127.8 127.0

**Navigation requirement: RNAV 1
GNSS required**

RWY 23L BASIV THREE ECHO ARRIVAL – RNAV (BASIV3E)

TRANSITIONS:

- ELNOS – From ELNOS track 138° to BASIV
- SALAG – From SALAG track 116° to BASIV
- UPLAR – From UPLAR track 094° to BASIV

Expect radar vectors when M106 active

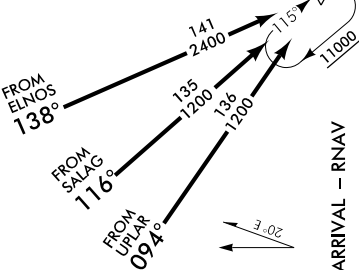
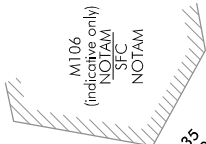
- From BASIV, track 115° to BONKO
- Cross BONKO at or above 8000 ft, MAX IAS 280 kt
- Track 114° to DOMRI
- Cross DOMRI MAX IAS 240 kt
- Track 052° to VABTI
- Cross VABTI at or above 6000 ft, MAX IAS 210 kt

**AVAILABLE BY ALLOCATION FROM ATC
FOR APPROVED OPERATORS ONLY**

At or above 6000 ft
MAX IAS 210 kt

ALL ARRIVALS:

- 2 minutes prior to the NZO/NZCC FIR boundary contact Auckland Control 123.9 MHz reporting position and level.
- ATC will issue appropriate STAR/Transition. Descend via STAR/Transition to ATC cleared level.
- If unable RNAV, expect radar vectors or alternative routing.



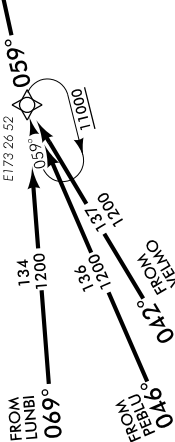
NOT TO SCALE

ARADI TWO ECHO ARRIVAL – RNAV (ARADIZE)

TRANSITIONS:

- LUNBI – From LUNBI track 069° to ARADI
- PEBLU – From PEBLU track 046° to ARADI
- VELMO – From VELMO track 042° to ARADI

- From ARADI, track 059° to GEWNY
- Cross GEWNY at or above 8000 ft, MAX IAS 280 kt
- Track 058° to DOMRI
- Cross DOMRI MAX IAS 240 kt
- Track 052° to VABTI
- Cross VABTI at or above 6000 ft, MAX IAS 210 kt

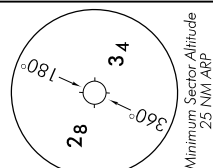


At or above 8000 ft
MAX IAS 280 kt

MAX IAS 240 kt



AARNVSTAR23L-4-P



Changes from 9 NOV 17: Pageination, All Arrivals text updated.