

ELEV 23

NZAA

AUCKLAND APPROACH: 124.3 129.6

TOWER: 118.7 120.95

AUCKLAND

RNAV STAR RWY 05R (6)

ATIS: 127.8 127.0

RWY 05R

DAVEE FIVE DELTA ARRIVAL – RNAV (DAVEE5D)

- Cross DAVEE at or above 8000 ft, MAX IAS 280 kt
- Track 329° via AA507 to STEAL
- Cross AA507 at or above 5000 ft, MAX IAS 240 kt
- Cross STEAL MAX IAS 220 kt
- Track 328° to ATAMA
- Cross ATAMA at or above 3000 ft, MAX IAS 210 kt

PEPPE SEVEN DELTA ARRIVAL – RNAV (PEPPE7D)

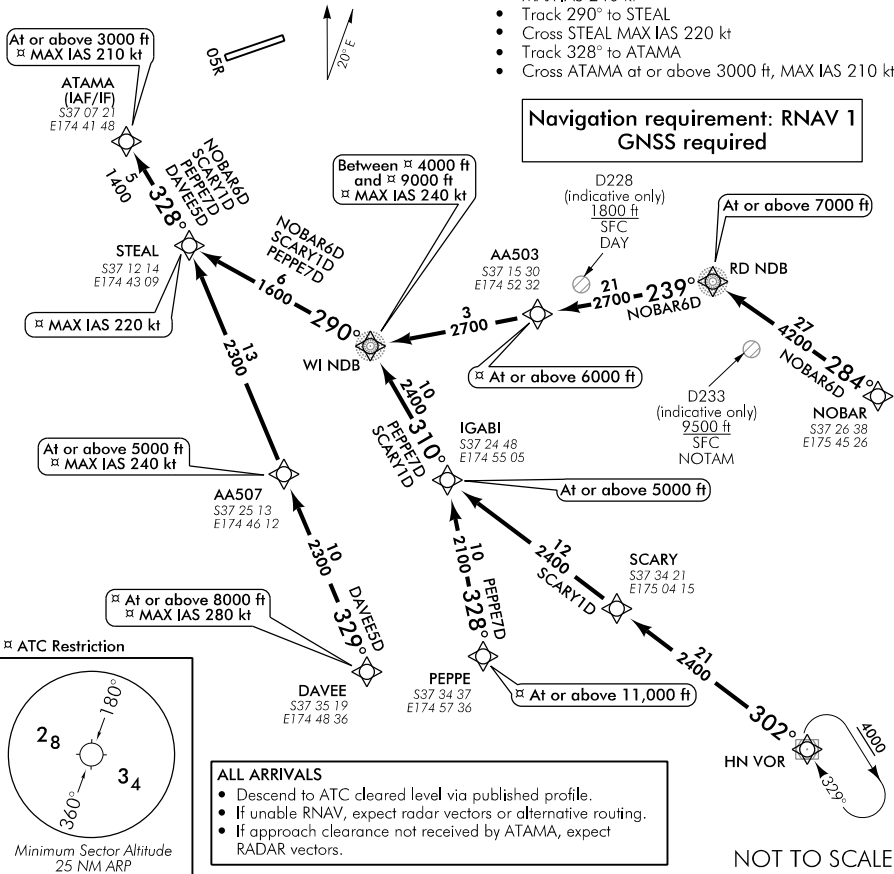
- Cross PEPPE at or above 11,000 ft
- Track 328° to IGABI
- Cross IGABI at or above 5000 ft
- Track 310° to WI NDB
- Cross WI NDB between 4000 ft and 9000 ft, MAX IAS 240 kt
- Track 290° to STEAL
- Cross STEAL MAX IAS 220 kt
- Track 328° to ATAMA
- Cross ATAMA at or above 3000 ft, MAX IAS 210 kt

SCARY ONE DELTA ARRIVAL – RNAV (SCARY1D) TRANSITION:

- HAMILTON** – From HN VOR track 302° to SCARY
- From SCARY track 302° to IGABI
- Cross IGABI at or above 5000 ft
- Track 310° to WI NDB
- Cross WI NDB between 4000 ft and 9000 ft, MAX IAS 240 kt
- Track 290° to STEAL
- Cross STEAL MAX IAS 220 kt
- Track 328° to ATAMA
- Cross ATAMA at or above 3000 ft, MAX IAS 210 kt

NOBAR SIX DELTA ARRIVAL – RNAV (NOBAR6D)

- Expect radar vectors when D233 active*
- From NOBAR track 284° to RD NDB
- Cross RD NDB at or above 7000 ft
- Track 239° via AA503 to WI NDB
- Cross AA503 at or above 6000 ft
- Cross WI NDB between 4000 ft and 9000 ft, MAX IAS 240 kt
- Track 290° to STEAL
- Cross STEAL MAX IAS 220 kt
- Track 328° to ATAMA
- Cross ATAMA at or above 3000 ft, MAX IAS 210 kt



AARNVSTAR05R-6-M

Changes from 20 JUL 17: TWR secondary FREQ, ATC call sign update.

Effective: 9 NOV 17

© Civil Aviation Authority

AUCKLAND

RNAV STAR RWY 05R (6)

NOT TO SCALE

ELEV 23

NZAA

AUCKLAND

RNAV STAR RWY 23L (7)

AUCKLAND APPROACH: 124.3 129.6

TOWER: 118.7 120.95

ATIS: 127.8 127.0

RWY 23L

DAVEE THREE ALFA ARRIVAL – RNAV (DAVEE3A)

- Cross DAVEE at or above 8000 ft, MAX IAS 280 kt
- Track 341° to WI NDB
- Cross WI NDB at or above 5000 ft
- Track 020° via ZORBA to SABAV
- Cross ZORBA at MAX IAS 240 kt
- Cross SABAV at or above 4000 ft, MAX IAS 220 kt
- Track 321° to EMRAG
- Cross EMRAG at or above 3000 ft, MAX IAS 210 kt

PEPPE FOUR ALFA ARRIVAL – RNAV (PEPPE4A)

- Cross PEPPE at or above 11,000 ft
- Track 328° to IGABI
- Track 358° via AA422 to SABAV
- Cross AA422 at or above 5000 ft
- Cross SABAV at or above 4000 ft, MAX IAS 220 kt
- Track 321° to EMRAG
- Cross EMRAG at or above 3000 ft, MAX IAS 210 kt

SKEPY ONE ALFA ARRIVAL – RNAV (SKEPY1A)

Expect radar vectors when D234 is active

TRANSITION:

HAMILTON

- From SKEPY track 326° via AA415 to SABAV
- Cross AA415 at or above 5000 ft
- Cross SABAV at or above 4000 ft, MAX IAS 220 kt
- Track 321° to EMRAG
- Cross EMRAG at or above 3000 ft, MAX IAS 210 kt

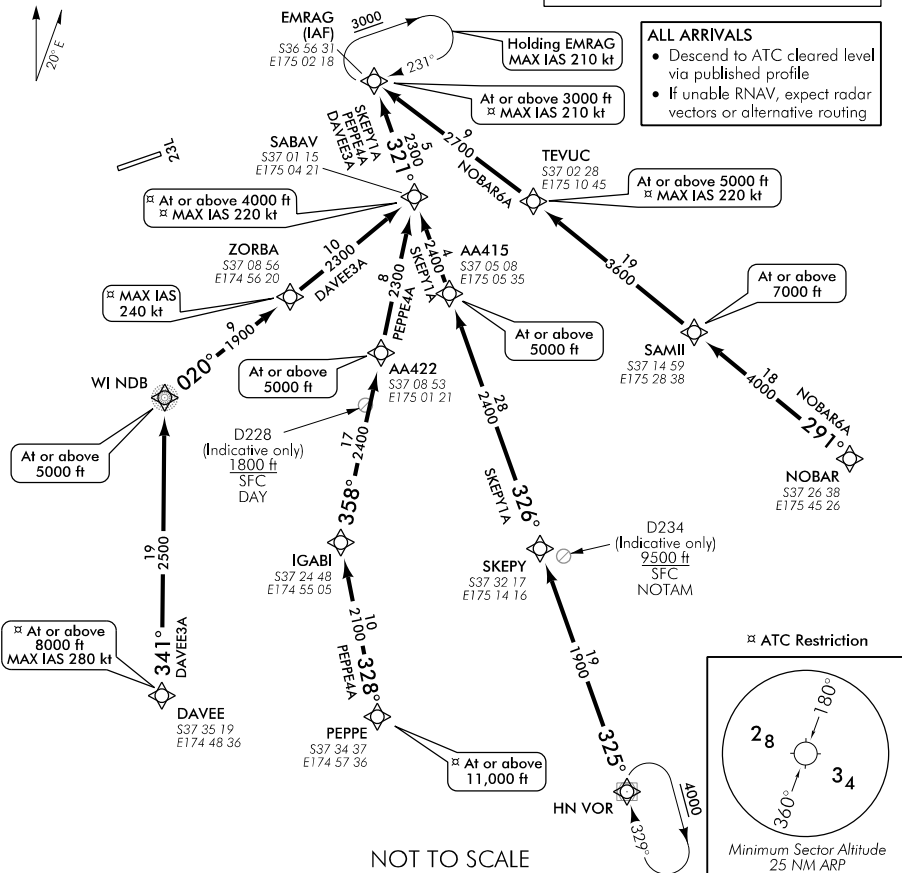
NOBAR SIX ALFA ARRIVAL – RNAV (NOBAR6A)

- From NOBAR track 291° via SAMII and TEVUC to EMRAG
- Cross SAMII at or above 7000 ft
- Cross TEVUC at or above 5000 ft, MAX IAS 220 kt
- Cross EMRAG at or above 3000 ft, MAX IAS 210 kt

Navigation requirement: RNAV 1
GNSS required

ALL ARRIVALS

- Descend to ATC cleared level via published profile
- If unable RNAV, expect radar vectors or alternative routing



Changes from 20 JUL 17: TWR secondary FREQ, ATC call sign update.

AARNVSTAR23L7-C