

ELEV 23

NZAA

AUCKLAND APPROACH: 124.3 129.6

TOWER: 118.7 120.95

ATIS: 127.8 127.0

# AUCKLAND

## RNAV STAR RWY 23L (9)

### RWY 23L

#### DAVEE FIVE ALFA ARRIVAL – RNAV (DAVEE5A)

- Cross DAVEE at or above 8000 ft, MAX IAS 280 kt
- Track 340° to WI NDB
- Cross WI NDB at or above 5000 ft
- Track 020° via ZORBA to SABAV
- Cross ZORBA at MAX IAS 240 kt
- Cross SABAV at or above 4000 ft, MAX IAS 220 kt
- Track 321° to EMRAG
- Cross EMRAG at or above 3000 ft, MAX IAS 210 kt

#### PEPPE FOUR ALFA ARRIVAL – RNAV (PEPPE4A)

- Cross PEPPE at or above 11,000 ft
- Track 328° to IGABI
- Track 358° via AA422 to SABAV
- Cross AA422 at or above 5000 ft
- Cross SABAV at or above 4000 ft, MAX IAS 220 kt
- Track 321° to EMRAG
- Cross EMRAG at or above 3000 ft, MAX IAS 210 kt

#### SKEYY ONE ALFA ARRIVAL – RNAV (SKEYY1A)

Expect radar vectors when D234 is active

#### TRANSITION:

- HAMILTON** – From HN VOR track 325° to SKEYY
  - From SKEYY track 326° via AA415 to SABAV
  - Cross AA415 at or above 5000 ft
  - Cross SABAV at or above 4000 ft, MAX IAS 220 kt
  - Track 321° to EMRAG
  - Cross EMRAG at or above 3000 ft, MAX IAS 210 kt

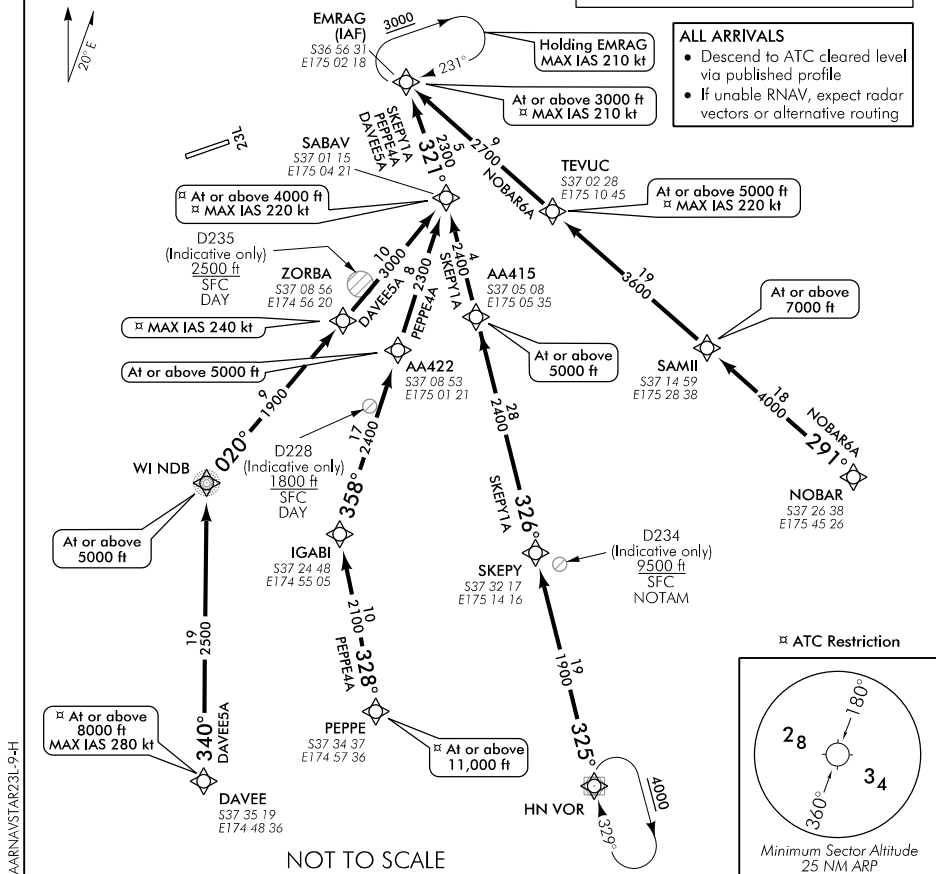
#### NOBAR SIX ALFA ARRIVAL – RNAV (NOBAR6A)

- From NOBAR track 291° via SAMII and TEVUC to EMRAG
- Cross SAMII at or above 7000 ft
- Cross TEVUC at or above 5000 ft, MAX IAS 220 kt
- Cross EMRAG at or above 3000 ft, MAX IAS 210 kt

**Navigation requirement: RNAV 1  
GNSS required**

**ALL ARRIVALS**

- Descend to ATC cleared level via published profile
- If unable RNAV, expect radar vectors or alternative routing



Changes from 1 FEB 18: DAVEE to WI NDB bearing.

**Effective: 24 MAY 18**

ELEV 23

NZAA

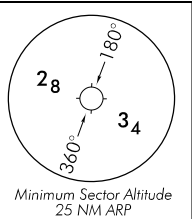
# AUCKLAND

## RNAV STAR RWY 23L (10)

AUCKLAND APPROACH: 124.3 129.6

TOWER: 118.7 120.95

ATIS: 127.8 127.0



### RWY 23L

#### DAVEE SIX CHARLIE ARRIVAL – RNAV (DAVEE6C)

- Cross DAVEE at or above 8000 ft, MAX IAS 280 kt
- Track 340° to AA403
- Cross AA403 at or above 5000 ft
- Track 341° to WI NDB
- Cross WI NDB at or above 4000 ft, MAX IAS 240 kt
- Track 353° to ESNAX
- Cross ESNAX at or above 3000 ft, MAX IAS 210 kt

#### PEPPE EIGHT CHARLIE ARRIVAL – RNAV (PEPPE8C)

- Cross PEPPE at or above 11,000 ft
- Track 328° to IGABI
- Cross IGABI at or above 5000 ft
- Track 310° to WI NDB
- Cross WI NDB at or above 4000 ft, MAX IAS 240 kt
- Track 353° to ESNAX
- Cross ESNAX at or above 3000 ft, MAX IAS 210 kt

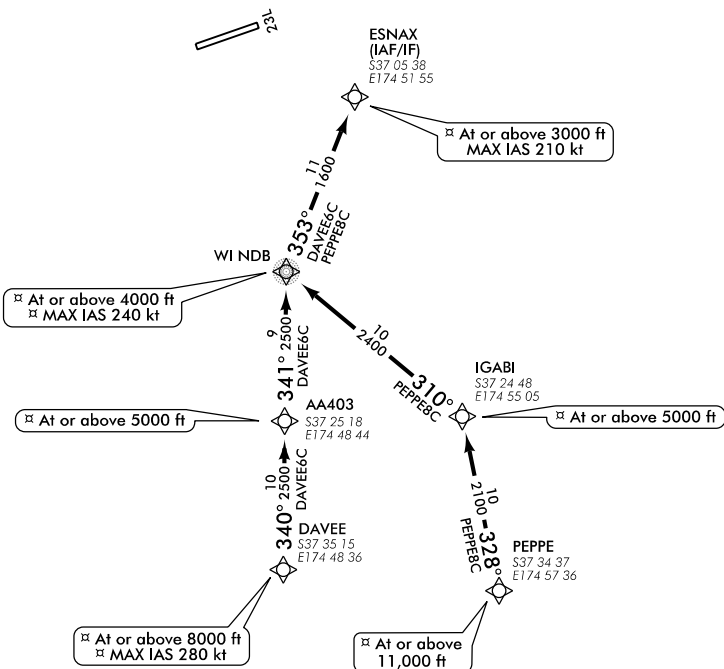
NOT TO SCALE

#### ALL ARRIVALS

- Descend to ATC cleared level via published profile
- If unable RNAV, expect radar vectors or alternative routing
- If approach clearance not received by ESNAX, expect RADAR vectors.

✂ ATC Restriction

Navigation requirement: RNAV 1  
GNSS required



Changes from 9 NOV 17: Pagination and chart title.

AARNVSTAR23L-10-A

Effective: 1 FEB 18