

ELEV 23

AUCKLAND

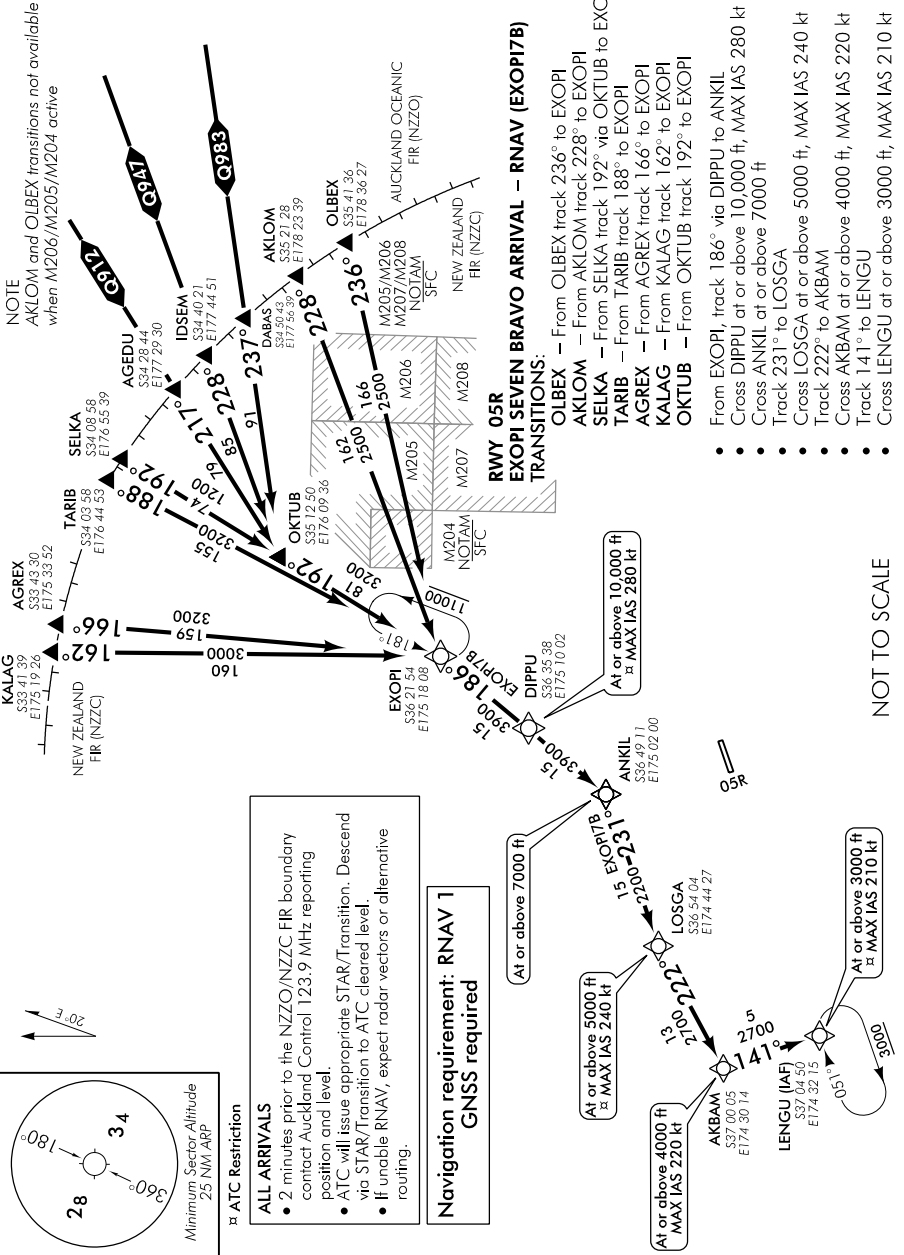
RNAV STAR RWY 05R (1)

AUCKLAND CONTROL: 123.9 134.0
AUCKLAND APPROACH: 124.3 129.6

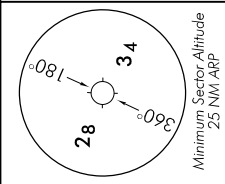
TOWER: 118.7 120.95

ATIS: 127.8 127.0

NOTE
AKLOM and OLBEX transitions not available
when M206/M205/M204 active



AARNVA STAR 05R-1-P



ATC Restriction

Changes from 1 FEB 18: DABAS to OKTUB track correction.

Effective: 29 MAR 18

AUCKLAND

RNAV STAR RWY 05R (2)

AUCKLAND CONTROL: 123.9 134.0
AUCKLAND APPROACH: 124.3 129.6

TOWER: 118.7 120.95 ATIS: 127.8 127.0

ALL ARRIVALS

- 2 minutes prior to the NZO/NZCC FIR boundary, contact Auckland Control 123.9 MHz reporting position and level.
- ATC will issue appropriate STAR/Transition. Descend via STAR/Transition to ATC cleared level.
- If unable RNAV, expect radar vectors or alternative routing.

**Navigation requirement: RNAV 1
GNSS required**

**RWY 05R
BASIS SIX BRAVO ARRIVAL – RNAV (BASIV6B)**

TRANSITIONS:

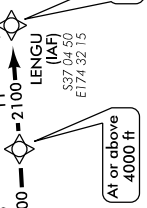
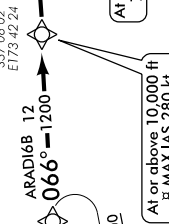
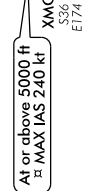
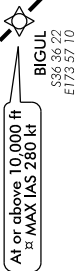
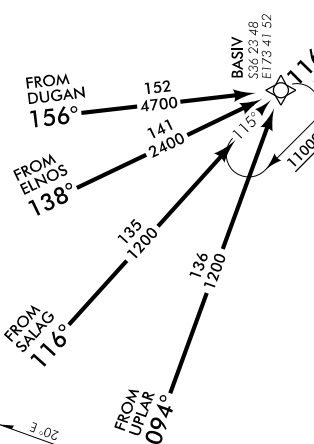
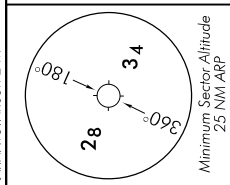
- DUGAN – From DUGAN track 156° to BASIV
- ELNOS – From ELNOS track 138° to BASIV
- SALAG – From SALAG track 116° to BASIV
- UPLAR – From UPLAR track 094° to BASIV

- From BASIV, track 116° via BIGUL and XMOND to LENGU
- Cross BIGUL at or above 10,000 ft; MAX IAS 280 kt
- Cross XMOND at or above 5000 ft; MAX IAS 240 kt
- Cross LENGU at or above 3000 ft; MAX IAS 210 kt

ARADI SIX BRAVO ARRIVAL – RNAV (ARADI6B)

TRANSITIONS:

- LUNBI – From LUNBI track 069° to ARADI
- PEBLU – From PEBLU track 046° to ARADI
- VELMO – From VELMO track 042° to ARADI
- From ARADI, track 066° via JABBA, AA514, ZOCCA and AA506 to LENGU
- Cross JABBA at or above 10,000 ft; MAX IAS 280 kt
- Cross AA514 at or above 7000 ft
- Cross ZOCCA at or above 5000 ft; MAX IAS 240 kt
- Cross AA506 at or above 4000 ft
- Cross LENGU at or above 3000 ft; MAX IAS 210 kt



NOT TO SCALE

Changes from 9 NOV 17: Pagination, All Arrival text updated.