

ELEV 23

# AUCKLAND

## RNAV STAR RWY 05R (3)

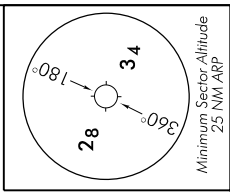
AUCKLAND CONTROL: 123.9 134.0  
 AUCKLAND APPROACH: 124.3 129.6

TOWER: 118.7 120.95

ATIS: 127.8 127.0

**Navigation requirement: RNAV 1**  
**GNSS required**

NOT TO SCALE



**ALL ARRIVALS**

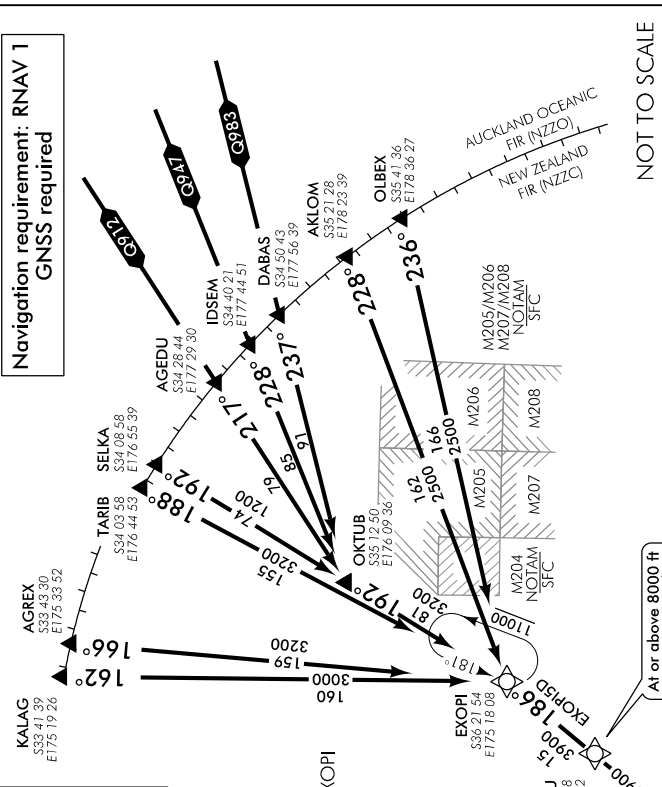
- 2 minutes prior to the NZO/NZCC FIR boundary contact Auckland Control 123.9 MHz reporting position and level.
- ATC will issue appropriate STAR/Transition. Descend via STAR/Transition to ATC cleared level.
- If unable RNAV, expect radar vectors or alternative routing.

**RWY 05R**  
**EXOPI FIVE DELTA ARRIVAL – RNAV (EXOPI5D)**

**TRANSITIONS:**

- OLBEX** – From OLBEX track 236° to EXOPI
- AKLOM** – From AKLOM track 228° to EXOPI
- SELKA** – From SELKA track 192° via OKTUB to EXOPI
- TARIB** – From TARIB track 188° to EXOPI
- AGREX** – From AGREX track 166° to EXOPI
- KALAG** – From KALAG track 162° to EXOPI
- OKTUB** – From OKTUB track 192° to EXOPI

- From EXOPI track 186° via DJIPPU to ANKIL
- Cross DJIPPU at or above 8000 ft, MAX IAS 280 kt
- Cross ANKIL MAX IAS 240 kt
- Track 231° to VIRIS
- Cross VIRIS at or above 6000 ft, MAX IAS 210 kt



**NOTE**  
 AKLOM and OLBEX transitions not available when M206/M205/M204 active

**AVAILABLE BY ALLOCATION FROM ATC FOR APPROVED OPERATORS ONLY**

At or above 6000 ft  
 MAX IAS 210 kt

At or above 8000 ft  
 MAX IAS 280 kt

05R

AARNVSTAR05R-3-5

Changes from 1 FEB 18: DABAS to OKTUB track correction.

**Effective: 29 MAR 18**

ELEV 23

NZAA

AUCKLAND APPROACH: 124.3 129.6

TOWER: 118.7 120.95

# AUCKLAND

## RNAV STAR RWY 05R (4)

ATIS: 127.8 127.0

Navigation requirement: RNAV 1  
GNSS required

### RWY 05R

#### UKAPA ONE DELTA ARRIVAL – RNAV (UKAPA1D)

Expect radar vectors when M106 active

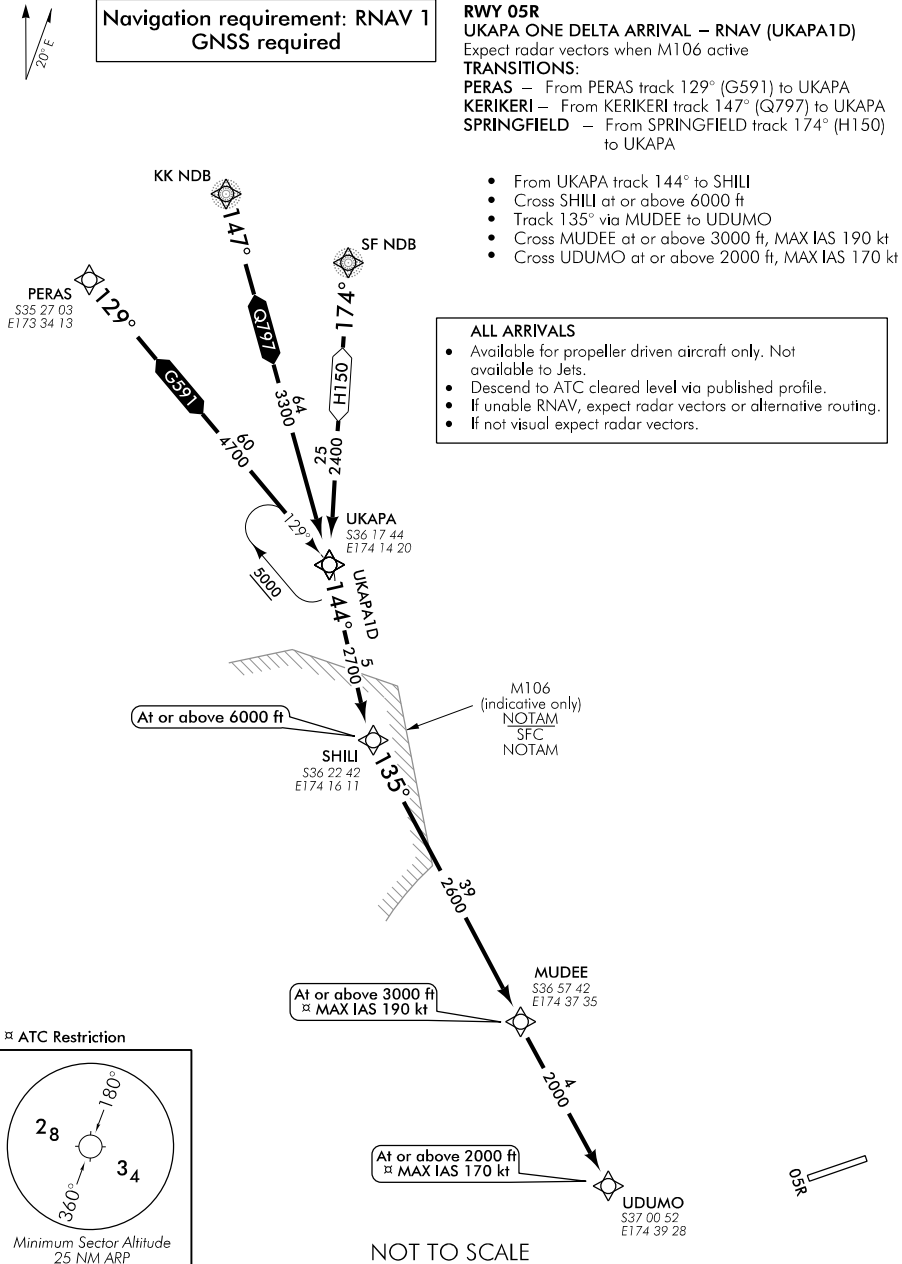
#### TRANSITIONS:

- PERAS – From PERAS track 129° (G591) to UKAPA
- KERIKERI – From KERIKERI track 147° (Q797) to UKAPA
- SPRINGFIELD – From SPRINGFIELD track 174° (H150) to UKAPA

- From UKAPA track 144° to SHILI
- Cross SHILI at or above 6000 ft
- Track 135° via MUDEE to UDUMO
- Cross MUDEE at or above 3000 ft, MAX IAS 190 kt
- Cross UDUMO at or above 2000 ft, MAX IAS 170 kt

#### ALL ARRIVALS

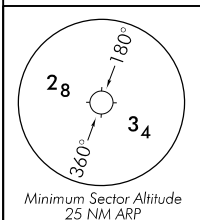
- Available for propeller driven aircraft only. Not available to Jets.
- Descend to ATC cleared level via published profile.
- If unable RNAV, expect radar vectors or alternative routing.
- If not visual expect radar vectors.



Changes from 9 NOV 17: Pagination.

AARNVSTAR05R-4-C

#### ATC Restriction



NOT TO SCALE



Effective: 1 FEB 18