

ELEV 23

NZAA

AUCKLAND APPROACH: 124.3 129.6

TOWER: 118.7 120.95

ATIS: 127.8 127.0

# AUCKLAND

## RNAV STAR RWY 05R (5)

### RWY 05R

#### DAVEE FIVE BRAVO ARRIVAL – RNAV (DAVEE5B)

- Cross DAVEE at or above 8000 ft, MAX IAS 280 kt
- Track 340° to WI NDB
- Cross WI NDB between 5000 ft and 9000 ft, MAX IAS 240 kt
- Track 279° to GITUK
- Cross GITUK at or above 4000 ft, MAX IAS 220 kt
- Track 321° to LENGU
- Cross LENGU at or above 3000 ft, MAX IAS 210 kt

#### PEPPE FOUR BRAVO ARRIVAL – RNAV (PEPPE4B)

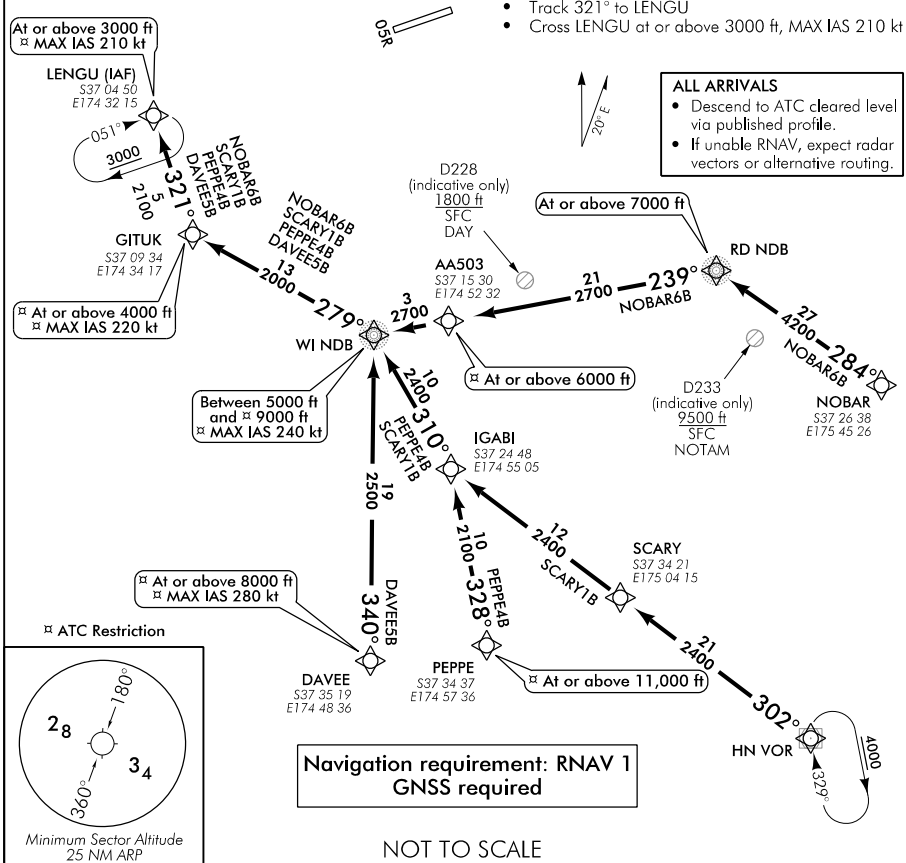
- Cross PEPPE at or above 11,000 ft
- Track 328° to IGABI
- Track 310° to WI NDB
- Cross WI NDB between 5000 ft and 9000 ft, MAX IAS 240 kt
- Track 279° to GITUK
- Cross GITUK at or above 4000 ft, MAX IAS 220 kt
- Track 321° to LENGU
- Cross LENGU at or above 3000 ft, MAX IAS 210 kt

#### SCARY ONE BRAVO ARRIVAL – RNAV (SCARY1B) TRANSITION:

- HAMILTON** – From HN VOR track 302° to SCARY
  - From SCARY track 302° to IGABI
  - Track 310° to WI NDB
  - Cross WI NDB between 5000 ft and 9000 ft, MAX IAS 240 kt
  - Track 279° to GITUK
  - Cross GITUK at or above 4000 ft, MAX IAS 220 kt
  - Track 321° to LENGU
  - Cross LENGU at or above 3000 ft, MAX IAS 210 kt

#### NOBAR SIX BRAVO ARRIVAL – RNAV (NOBAR6B)

- Expect radar vectors when D233 active**
  - From NOBAR track 284° to RD NDB
  - Cross RD NDB at or above 7000 ft
  - Track 239° via AA503 to WI NDB
  - Cross AA503 at or above 6000 ft
  - Cross WI NDB between 5000 ft and 9000 ft, MAX IAS 240 kt
  - Track 279° to GITUK
  - Cross GITUK at or above 4000 ft, MAX IAS 220 kt
  - Track 321° to LENGU
  - Cross LENGU at or above 3000 ft, MAX IAS 210 kt



AARNVSTAR05R-5-R

Changes from 1 FEB 18: DAVEE to WI NDB bearing.

# AUCKLAND

ELEV 23

NZAA

## RNAV STAR RWY 05R (6)

AUCKLAND APPROACH: 124.3 129.6

TOWER: 118.7 120.95

ATIS: 127.8 127.0

### RWY 05R

#### DAVEE FIVE DELTA ARRIVAL – RNAV (DAVEE5D)

- Cross DAVEE at or above 8000 ft, MAX IAS 280 kt
- Track 329° via AA507 to STEAL
- Cross AA507 at or above 5000 ft, MAX IAS 240 kt
- Cross STEAL MAX IAS 220 kt
- Track 328° to ATAMA
- Cross ATAMA at or above 3000 ft, MAX IAS 210 kt

#### PEPPE SEVEN DELTA ARRIVAL – RNAV (PEPPE7D)

- Cross PEPPE at or above 11,000 ft
- Track 328° to IGABI
- Cross IGABI at or above 5000 ft
- Track 310° to WI NDB
- Cross WI NDB between 4000 ft and 9000 ft, MAX IAS 240 kt
- Track 290° to STEAL
- Cross STEAL MAX IAS 220 kt
- Track 328° to ATAMA
- Cross ATAMA at or above 3000 ft, MAX IAS 210 kt

#### SCARY ONE DELTA ARRIVAL – RNAV (SCARY1D)

##### TRANSITION:

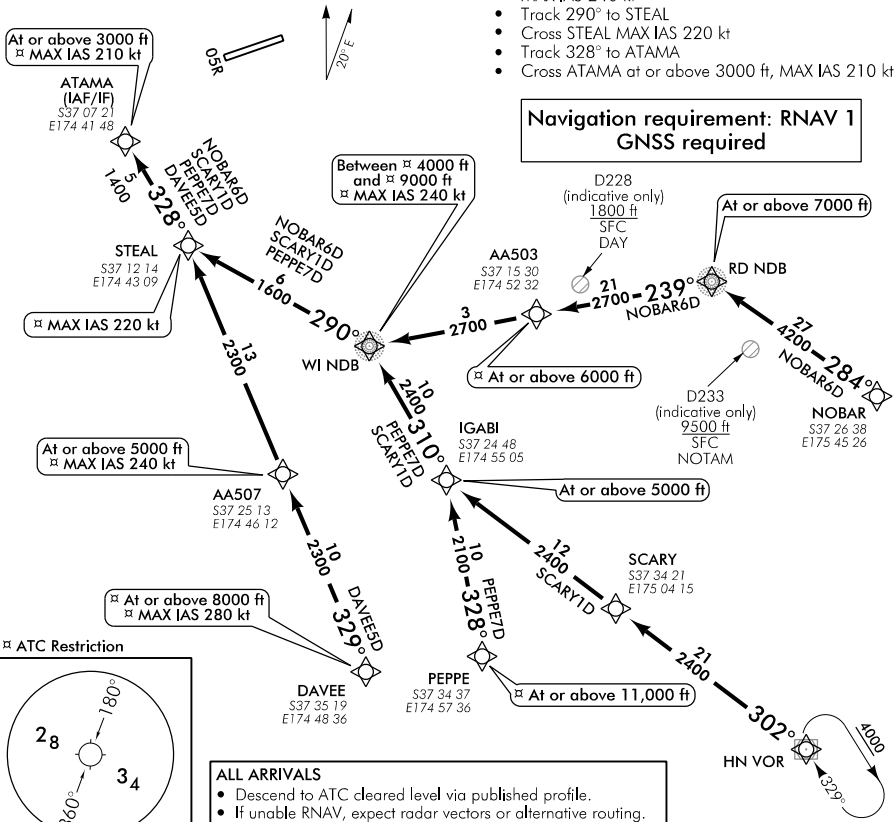
##### HAMILTON – From HN VOR track 302° to SCARY

- From SCARY track 302° to IGABI
- Cross IGABI at or above 5000 ft
- Track 310° to WI NDB
- Cross WI NDB between 4000 ft and 9000 ft, MAX IAS 240 kt
- Track 290° to STEAL
- Cross STEAL MAX IAS 220 kt
- Track 328° to ATAMA
- Cross ATAMA at or above 3000 ft, MAX IAS 210 kt

#### NOBAR SIX DELTA ARRIVAL – RNAV (NOBAR6D)

##### Expect radar vectors when D233 active

- From NOBAR track 284° to RD NDB
- Cross RD NDB at or above 7000 ft
- Track 239° via AA503 to WI NDB
- Cross AA503 at or above 6000 ft
- Cross WI NDB between 4000 ft and 9000 ft, MAX IAS 240 kt
- Track 290° to STEAL
- Cross STEAL MAX IAS 220 kt
- Track 328° to ATAMA
- Cross ATAMA at or above 3000 ft, MAX IAS 210 kt



Changes from 9 NOV 17: Pagination.

NOT TO SCALE

# AUCKLAND

## RNAV STAR RWY 05R (6)