

ELEV 23

NZAA

AUCKLAND APPROACH: 124.3 129.6

TOWER: 118.7 120.95

ATIS: 127.8 127.0

# AUCKLAND

## RNAV STAR RWY 05R (7)

**ALL ARRIVALS**

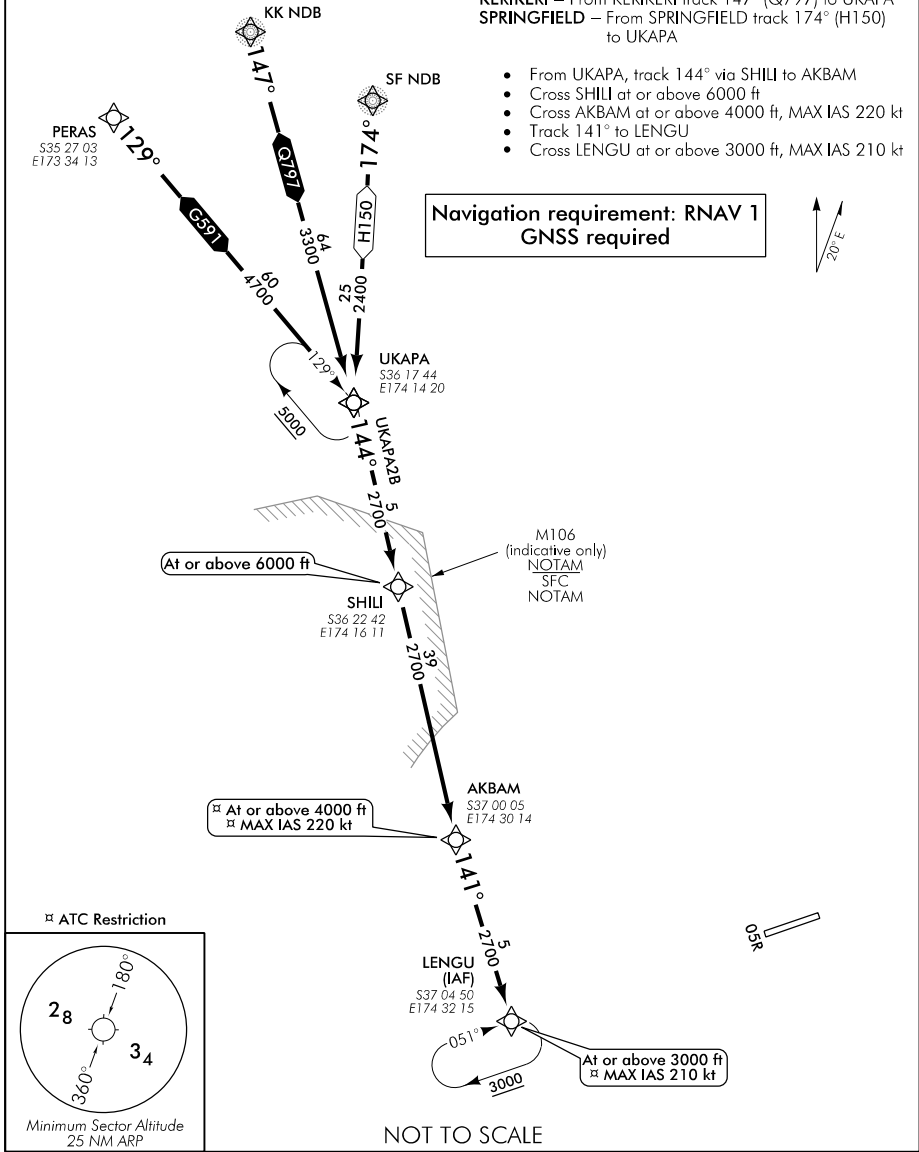
- Descend to ATC cleared level via published profile.
- If unable RNAV, expect radar vectors or alternative routing.

**RWY 05R**  
**UKAPA TWO BRAVO ARRIVAL – RNAV (UKAPA2B)**  
 Expect radar vectors when M106 active

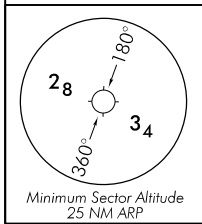
**TRANSITIONS:**  
**PERAS** – From PERAS track 129° (G591) to UKAPA  
**KERIKERI** – From KERIKERI track 147° (Q797) to UKAPA  
**SPRINGFIELD** – From SPRINGFIELD track 174° (H150) to UKAPA

- From UKAPA, track 144° via SHILI to AKBAM
- Cross SHILI at or above 6000 ft
- Cross AKBAM at or above 4000 ft, MAX IAS 220 kt
- Track 141° to LENGU
- Cross LENGU at or above 3000 ft, MAX IAS 210 kt

**Navigation requirement: RNAV 1  
 GNSS required**



AARNVSTAR05R-7-K



NOT TO SCALE

Changes from 9 NOV 17: Pagination.

**Effective: 1 FEB 18**

