

ELEV 23

CAT A,B,C,D

AUCKLAND

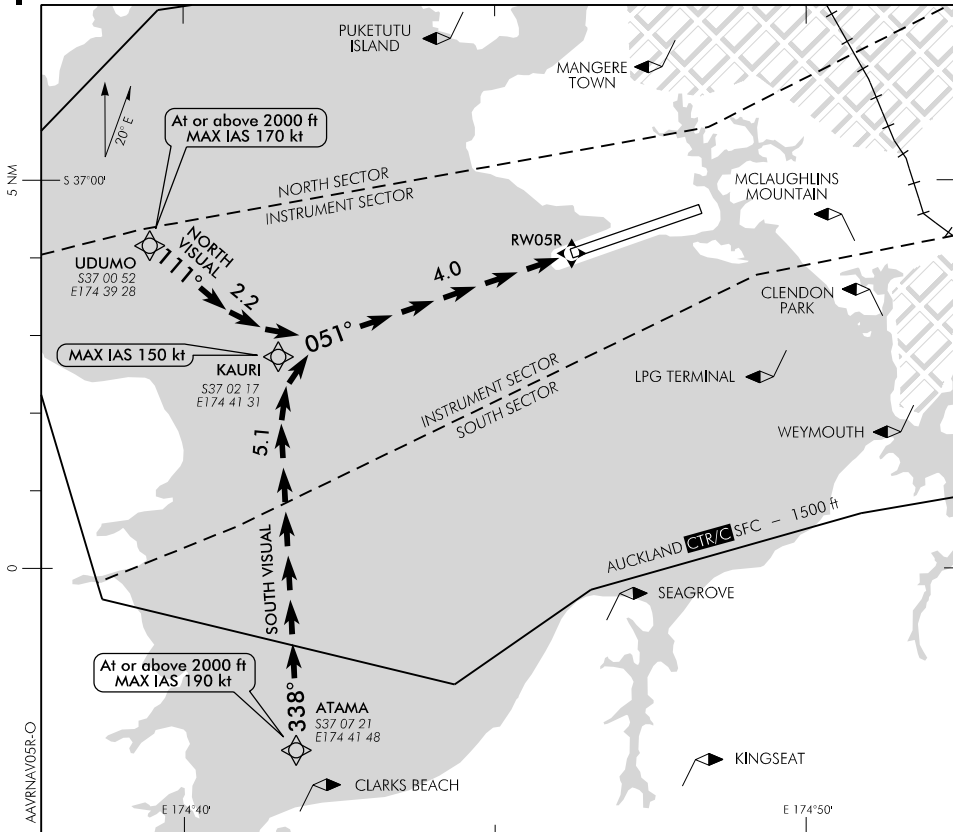
NZAA

VISUAL RNAV ARRIVAL RWY 05R

AUCKLAND APPROACH: 124.3 129.6

ATIS: 127.8 127.0

TOWER: 118.7 120.95



- Note 1. Available by DAY only. Aircraft must maintain continuous visual reference to the surface
 2. Meteorological Minima: (DAY) 3000 – 8 (Night) NA

NORTH VISUAL ARRIVAL RWY 05R

- From UDUMO track to KAURI to intercept final for RWY 05R
- MAX IAS 150 kt at KAURI
- Maintain 2000 ft, expect further descent from TWR

Requirement

- If approach clearance not received by UDUMO expect radar vectors.

SOUTH VISUAL ARRIVAL RWY 05R

- From ATAMA track to KAURI to intercept final for RWY 05R
- MAX IAS 150 kt at KAURI
- Maintain 2000 ft, expect further descent from TWR

Requirement

- If approach clearance not received by ATAMA expect radar vectors.

Effective: 9 NOV 17

Changes from 10 NOV 16: ATIS call sign amended < TOWER secondary FREQ.

ELEV 23

CAT A,B,C,D

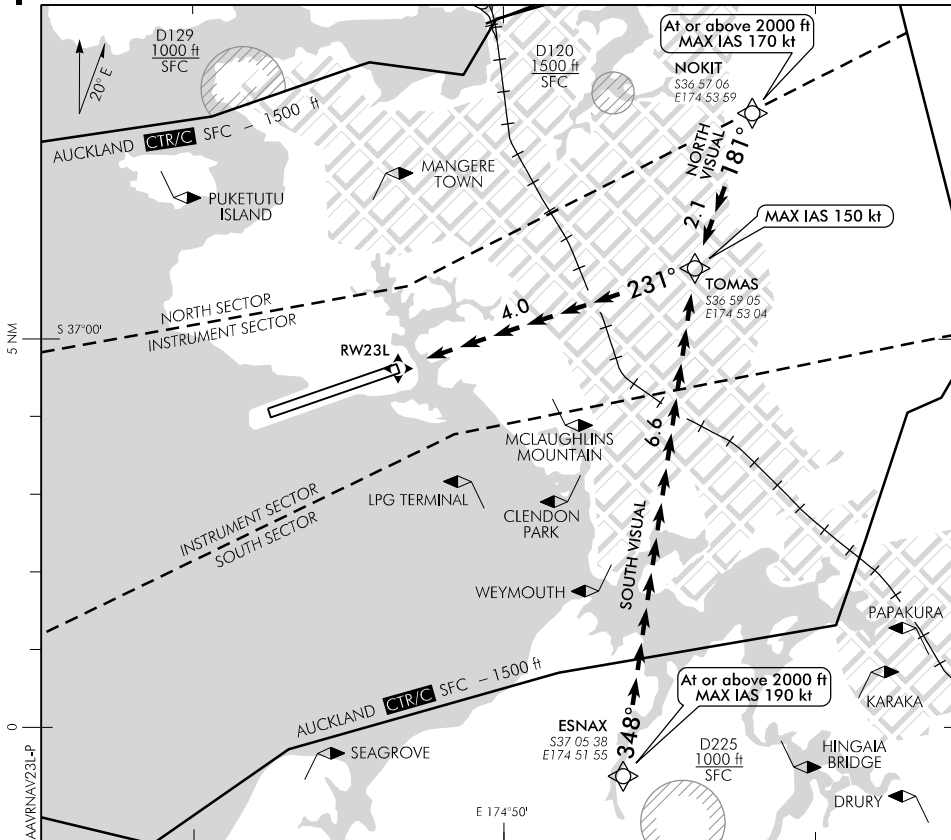
NZAA

AUCKLAND VISUAL RNAV ARRIVAL RWY 23L

AUCKLAND APPROACH: 124.3 129.6

ATIS: 127.8 127.0

TOWER: 118.7 120.95



Changes from 10 NOV 16: ATC call sign amended, TOWER secondary FREQ.

- Note 1. Available by DAY only. Aircraft must maintain continuous visual reference to the surface
 2. Meteorological Minima: (DAY) 3000 – 8 (Night) NA

NORTH VISUAL ARRIVAL RWY 23L

- From NOKIT track to TOMAS to intercept final for RWY 23L
- MAX IAS 150 kt at TOMAS
- Maintain 2000 ft, expect further descent from TWR

Requirement

- If approach clearance not received by NOKIT expect radar vectors.

SOUTH VISUAL ARRIVAL RWY 23L

- From ESNAX track to TOMAS to intercept final for RWY 23L
- MAX IAS 150 kt at TOMAS
- Maintain 2000 ft, expect further descent from TWR

Requirement

- If approach clearance not received by ESNAX expect radar vectors.