

ELEV 23

AUCKLAND

NZAA

VFR ARRIVAL/DEPARTURE PROCEDURES — ALL RWY

TOWER: 118.7 120.95

ATIS: 127.8 127.0

VFR Arrival Procedures

For VFR flights entering Auckland CTR/C and landing at Auckland INTL AD or Auckland Heliport.

Prior to entering Auckland CTR/C, contact Auckland Tower 118.7 MHz and give abbreviated position report:

- aircraft callsign
- position relative to a Visual Reporting Point
- altitude

On receipt of appropriate Arrival Procedure instructions, follow the assigned Arrival Procedure and comply with further instructions from Auckland Tower.

Note: *If a clearance is not available, remain outside Auckland CTR/C.*

Communications Failure

Outside Auckland CTR/C — remain clear and proceed to an alternative aerodrome.

Squawk 7600. Report arrival to Auckland Tower.

Within Auckland CTR/C — leave the Auckland CTR/C via the reversal of the assigned arrival procedure, **Squawk 7600**, and proceed to an alternative aerodrome. Report arrival to Auckland Tower.

VFR Departure Procedures

For VFR flights departing Auckland INTL AD or Auckland Heliport and vacating the CTR/C.

Pre-start — refer to Auckland Ground Movements (2) — ALL RWY chart.

Auckland Tower will issue a Departure Procedure and Squawk Code prior to take-off.

Note: *If the requested Departure Procedure is not available, an alternative Departure Procedure will be issued.*

After take-off, follow the assigned Departure Procedure. **Report when clear of the Auckland CTR/C.** Auckland Tower will advise when to change frequency.

Aircraft leaving CTR to north — caution B175 Auckland City MBZ (transponder mandatory from 1500 ft to 2500 ft).

Communications Failure

Vacate the Auckland CTR/C via the assigned Departure Procedure. **Squawk 7600.** Maintain VFR.

ELEV 23

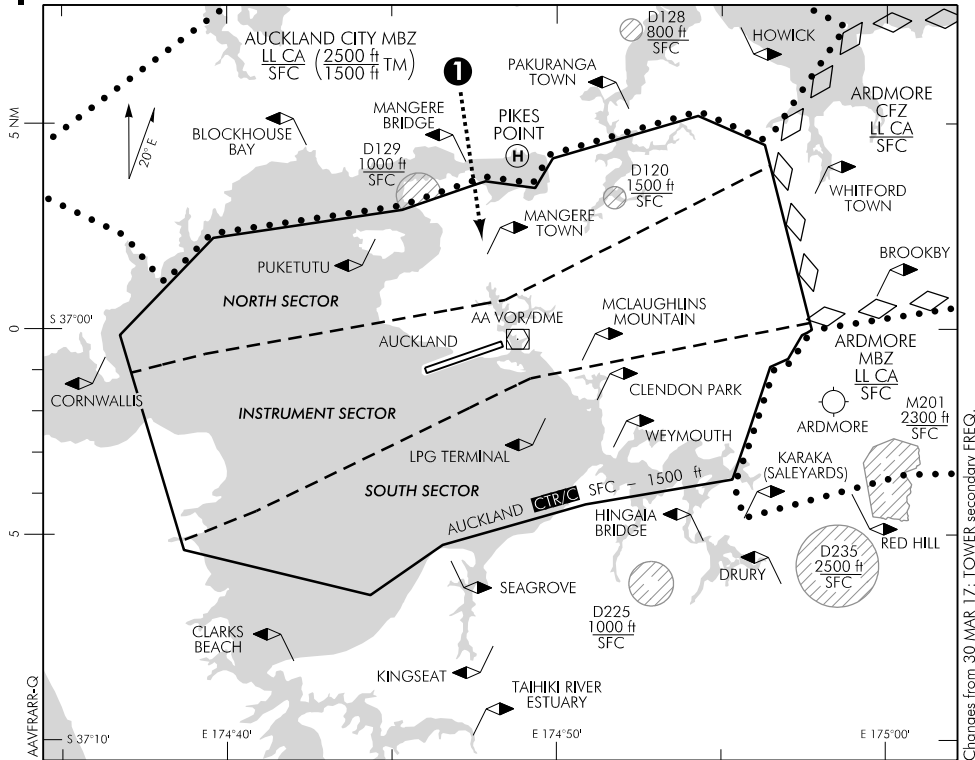
NZAA

TOWER: 118.7 120.95

AUCKLAND

VFR ARRIVAL PROCEDURES – ALL RWY

ATIS: 127.8 127.0



Changes from 30 MAR 17: TOWER secondary FREQ.

REFER ALSO VISUAL NAVIGATION CHARTS

For VFR flights entering the Auckland CTR/C and landing at Auckland INTL AD or Auckland Heliport

See Auckland VFR Arrival/Departure page for information and instructions regarding VFR Arrival Procedures.

Designator

Route

- ❶ Mangere Bridge ARR Track via Mangere Bridge to Mangere Town, 1500 ft or below. Unless otherwise instructed hold RIGHT hand west of Mangere Town for joining instructions.

Note: More direct plain language clearances may be issued on request, or in periods of low traffic density.

If a clearance is not available, remain outside Auckland CTR/C.