

ELEV 23

CAT A,B,C,D

AUCKLAND

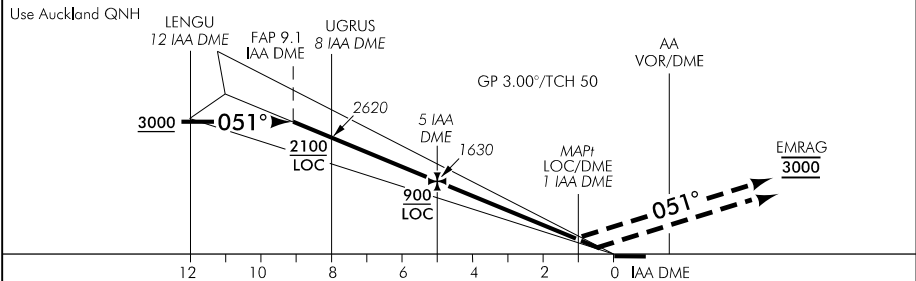
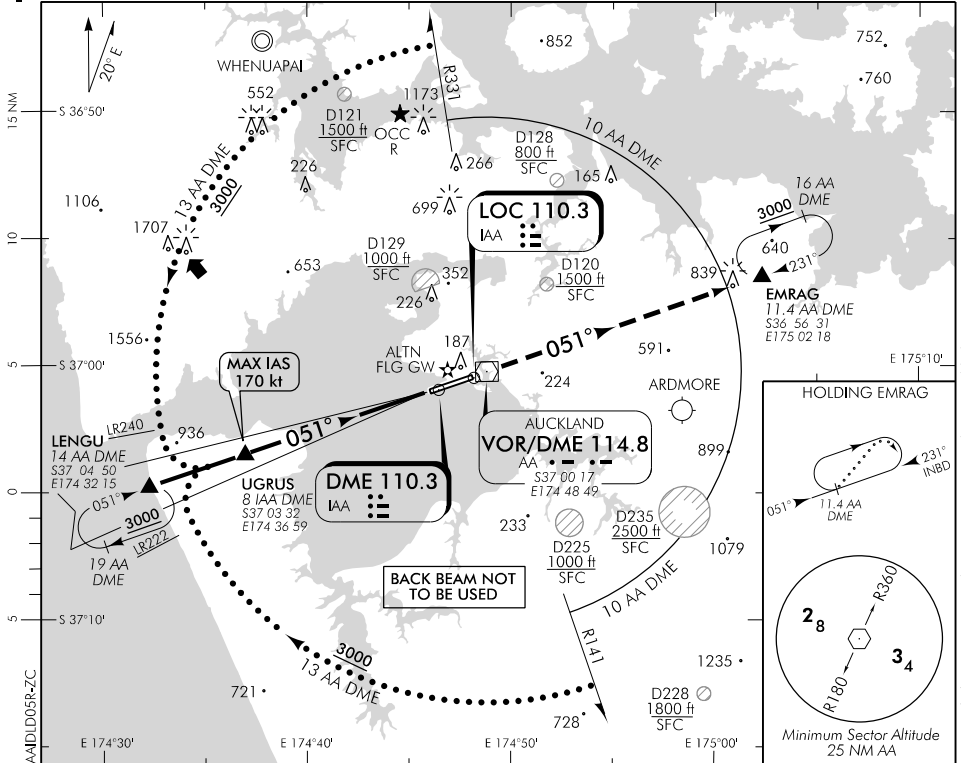
RWY 05R THR ELEV 15

ILS/DME or LOC/DME RWY 05R

AUCKLAND APPROACH: 124.3 129.6

ATIS: 127.8 127.0

TOWER: 118.7 120.95



MISSED APCH: MAX IAS 185 kt. Track 051° to EMRAG **3000**

IAA DME DIST	10	9	8	7	6	5	4	3	2	1.1	MAPi	1	0.4
Advisory Altitude 3°	3280	2950	2620	2280	1950	1630	1300	980	650	MDA	MDA	DA	
Category	A			B			C			D/D _L			
ILS/DME (CAT I)	215(200) – 800 or RVR 550												
ILS/DME LH ALS U/S	265(250) – 1200 or RVR 800												
LOC/DME	350(335) – 1500												
Circling	560(537) – 1900			560(537) – 2800			*760(737) – 3700			*920(897) – 4600			

* Circling CAT C and D NA north of RWY

Effective: 9 NOV 17

© Civil Aviation Authority

AUCKLAND
ILS/DME or LOC/DME RWY 05R

Changes from 14 SEP 17: ATC call sign amended, TOWER secondary FREQ., D128 and D228 added.

ELEV 23

CAT A,B,C,D

RWY 23L THR ELEV 23

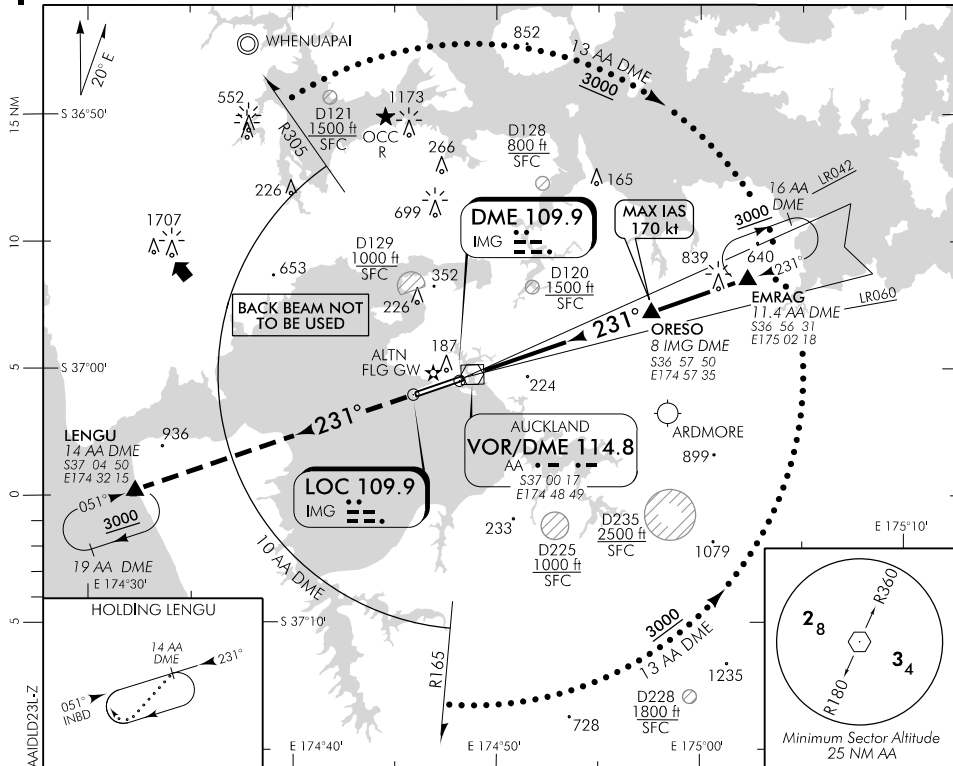
AUCKLAND

ILS/DME or LOC/DME RWY 23L

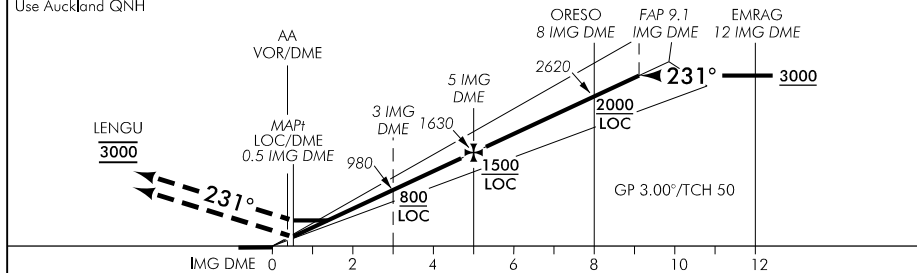
AUCKLAND APPROACH: 124.3 129.6

ATIS: 127.8 127.0

TOWER: 118.7 120.95



Use Auckland QNH



MISSED APCH: MAX IAS 185 kt. Track 231° to LENGU 3000

IMG DME DIST	MAP/0.5	1.3	2	3	4	5	6	7	8	9	10
Advisory Altitude 3°	DA/MDA	MDA	660	980	1310	1630	1960	2290	2620	2960	3290
Category	A		B			C			D/D _L		
ILS/DME (CAT I)	223(200) – 800 or RVR 550										
ILS/DME LH ALS U/S	273(250) – 1200 or RVR 800										
LOC/DME	450(427) – 1500										
Circling	560(537) – 1900		560(537) – 2800			*760(737) – 3700			*920(897) – 4600		

* Circling CAT C and D NA north of RWY

Changes from 14 SEP 17: ATC call sign amended, TOWER secondary FREQ, D128 and D228 added.

Effective: 9 NOV 17

© Civil Aviation Authority

AUCKLAND
ILS/DME or LOC/DME RWY 23L