

ELEV 23

CAT A,B,C,D

AUCKLAND

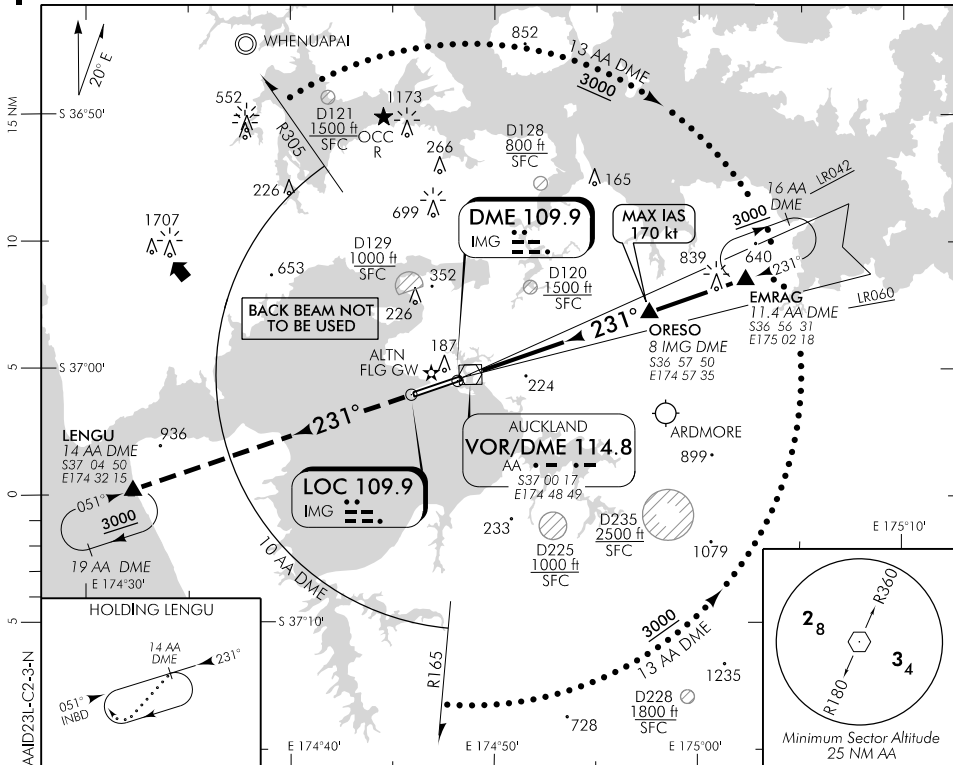
RWY 23L THR ELEV 23

ILS/DME (CAT II/III) RWY 23L

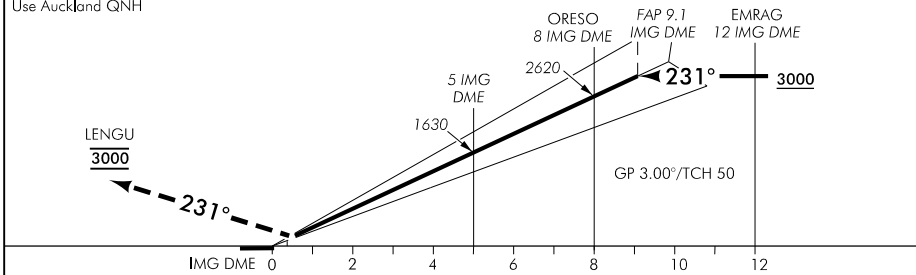
AUCKLAND APPROACH: 124.3 129.6

ATIS: 127.8 127.0

TOWER: 118.7 120.95



Use Auckland QNH



MISSED APCH: MAX IAS 185 kt. Track 231° to LENGUA 3000

IMG DME DIST	1	2	3	4	5	6	7	8	9	10
Advisory Altitude 3°	340	660	980	1310	1630	1960	2290	2620	2960	3290
Category	A			B			C		D/D _L	
ILS/DME CAT II	123(100) – RVR 300							123(100) – RVR 350*		
ILS/DME CAT III B	RVR 75									
* RVR 300 when conducting auto-land										

Effective: 9 NOV 17

Changes from 10 NOV 16: ATC call sign amended, TOWER secondary FREQ, D128 and D228 added.

