

ELEV 23

CAT A,B,C,D

**AUCKLAND**

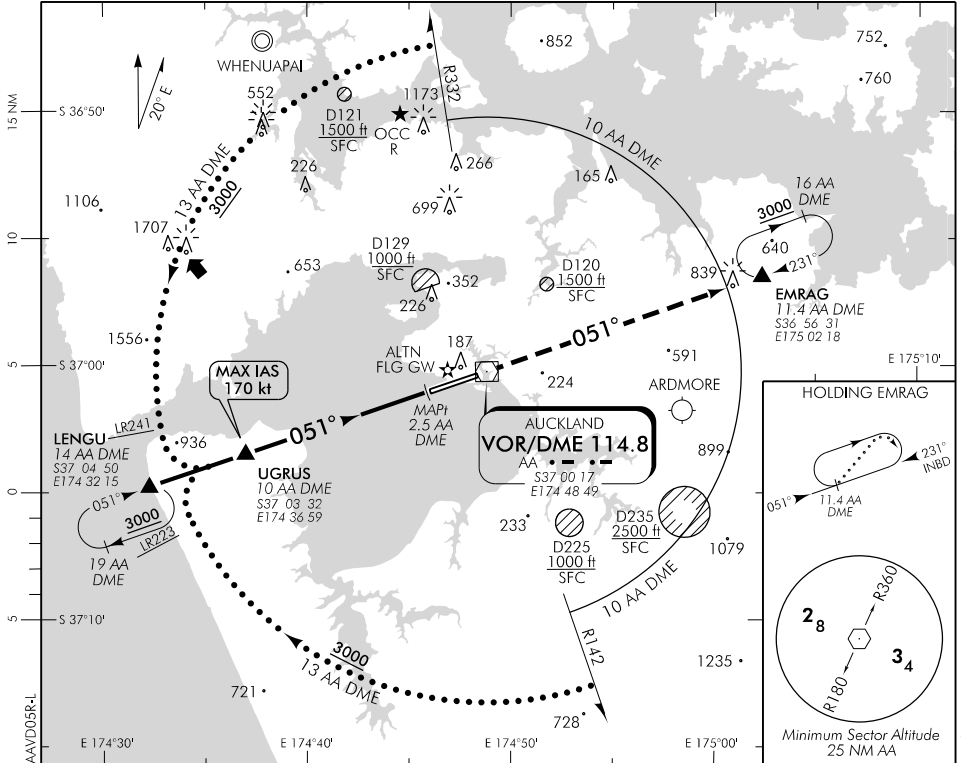
RWY 05R THR ELEV 15

**VOR/DME RWY 05R**

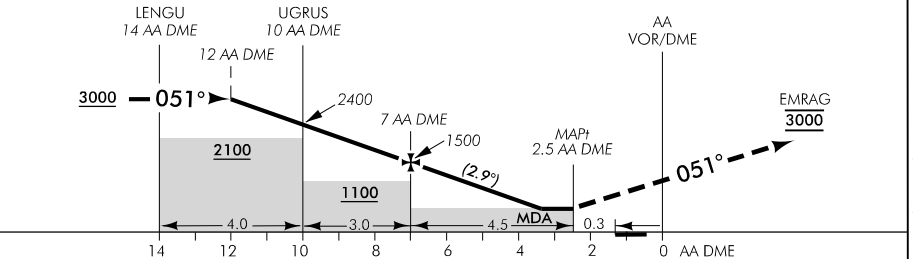
AUCKLAND CONTROL: 124.3 129.6

ATIS: 127.8 127.0

TOWER: 118.7 120.8



Use Auckland QNH



**MISSED APCH:** MAX IAS 185 kt. Climb on R051 to EMRAG 3000

AA DME DIST	10	9	8	7	6	5	4	3.1	MAPt 2.5
Advisory Altitude 5%	2400	2100	1800	1500	1200	900	600	MDA	MDA
Category	A		B			C		D	
VOR/DME	350(335) - 1500								
Circling	560(537) - 1900		560(537) - 2800			*760(737) - 3700		*920(897) - 4600	

\* Circling CAT C and D NA north of RWY

**Effective: 10 NOV 16**

Changes from 31 MAR 16: D225 updated.

ELEV 23

CAT A,B,C,D

# AUCKLAND

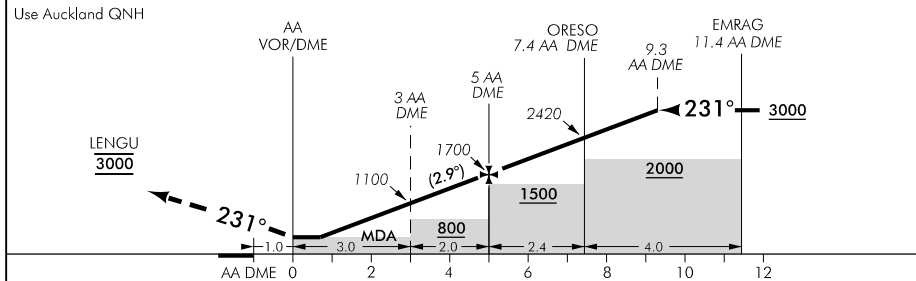
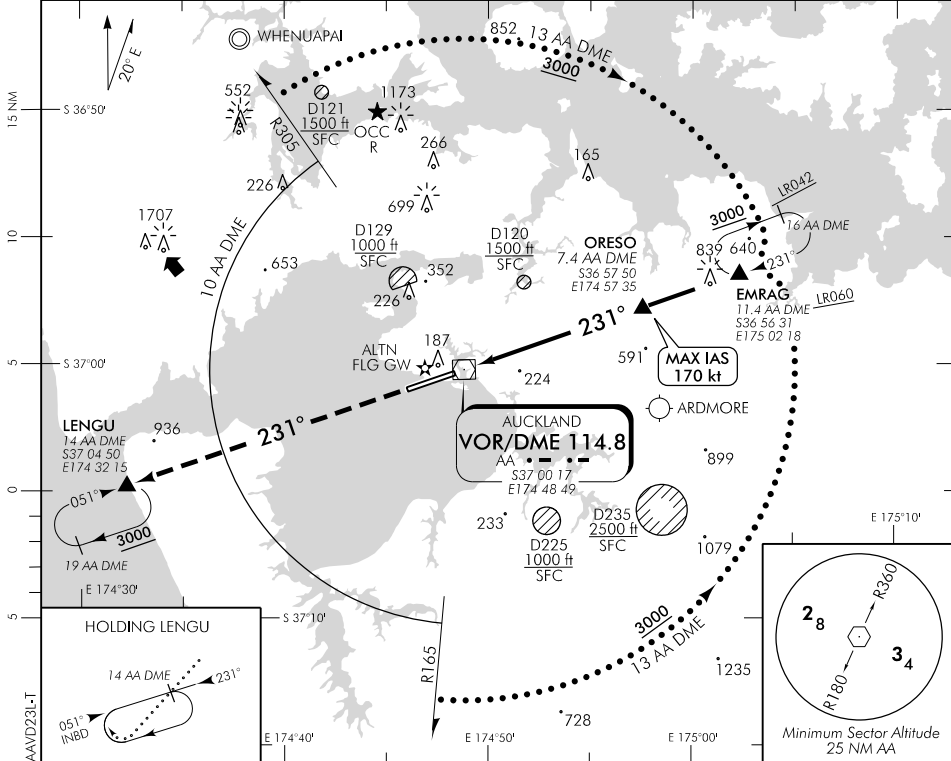
RWY 23L THR ELEV 23

## VOR/DME RWY 23L

AUCKLAND CONTROL: 124.3 129.6

ATIS: 127.8 127.0

TOWER: 118.7 120.8



**MISSED APCH:** MAX IAS 185 kt. Climb on R231 to LENGU 3000

AA DME DIST	MAPt VOR	0.7	1	2	3	4	5	6	7	8	9	10
Advisory Altitude 5%	MDA	MDA	500	800	1100	1400	1700	2000	2300	2600	2900	3200
Category		A		B			C			D		
VOR/DME		420(397) – 1500										
Circling		560(537) – 1900		560(537) – 2800			*760(737) – 3700			*920(897) – 4600		

\* Circling CAT C and D NA north of RWY

Changes from 26 MAY 16: D225 updated.

**Effective: 10 NOV 16**