

ELEV 23

CAT A,B,C,D

# AUCKLAND

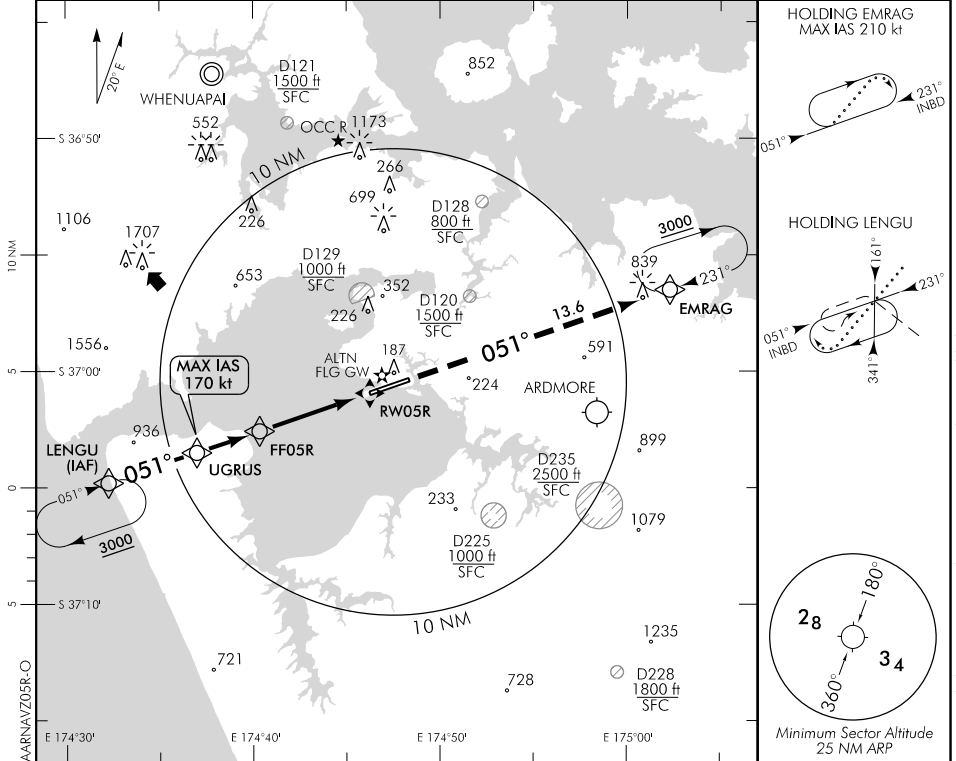
RWY 05R THR ELEV 15

**RNAV (GNSS) Z RWY 05R**

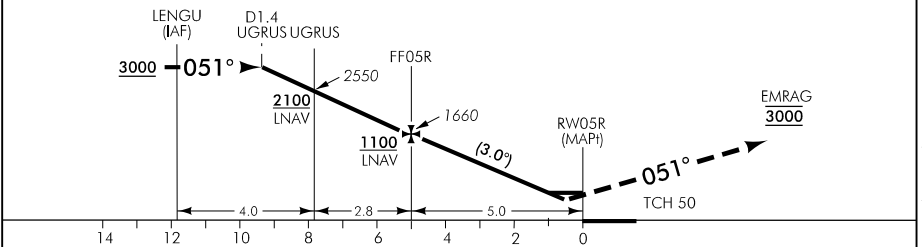
AUCKLAND APPROACH: 124.3 129.6

ATIS: 127.8 127.0

TOWER: 118.7 120.95



Use Auckland QNH



**MISSED APCH:** MAX IAS 185 kt. Climb on 051° to EMRAG 3000

DISTANCE to WPT	UGRUS	2	1	FF05R	4	3	2	1	0.9	RW05R
Advisory Altitude 3"	2550	2300	1980	1660	1340	1020	700	MDA	DA	MDA
Category	A			B		C		D		
LNAV/VNAV *	270(255) - 1500					330(315) - 1500				
LNAV	380(365) - 1500									
Circling	560(537) - 1900		560(537) - 2800			#760(737) - 3700		#920(897) - 4600		
* Valid to AD temperature -5°C. Use of remote QNH NA. # Circling CAT C and D NA north of RWY										

**Effective: 9 NOV 17**

Changes from 10 NOV 16: ATIS call sign amended, TOWER secondary FREQ, D128 and D228 added.

ELEV 23

CAT A,B,C,D

RWY 23L THR ELEV 23

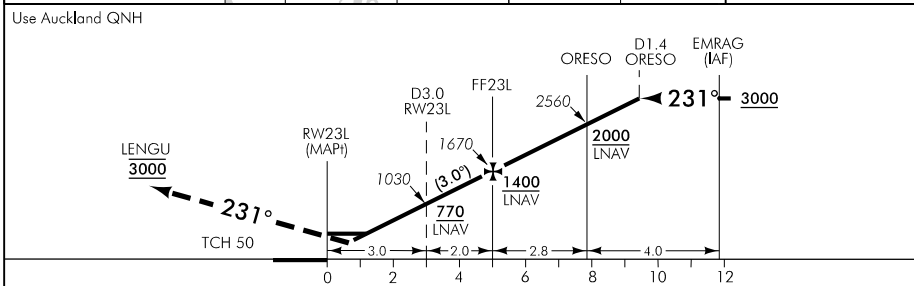
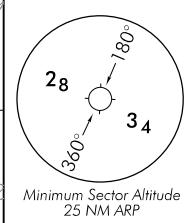
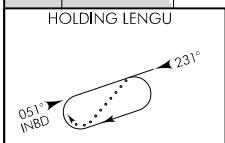
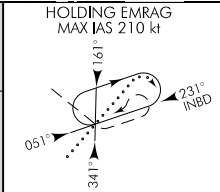
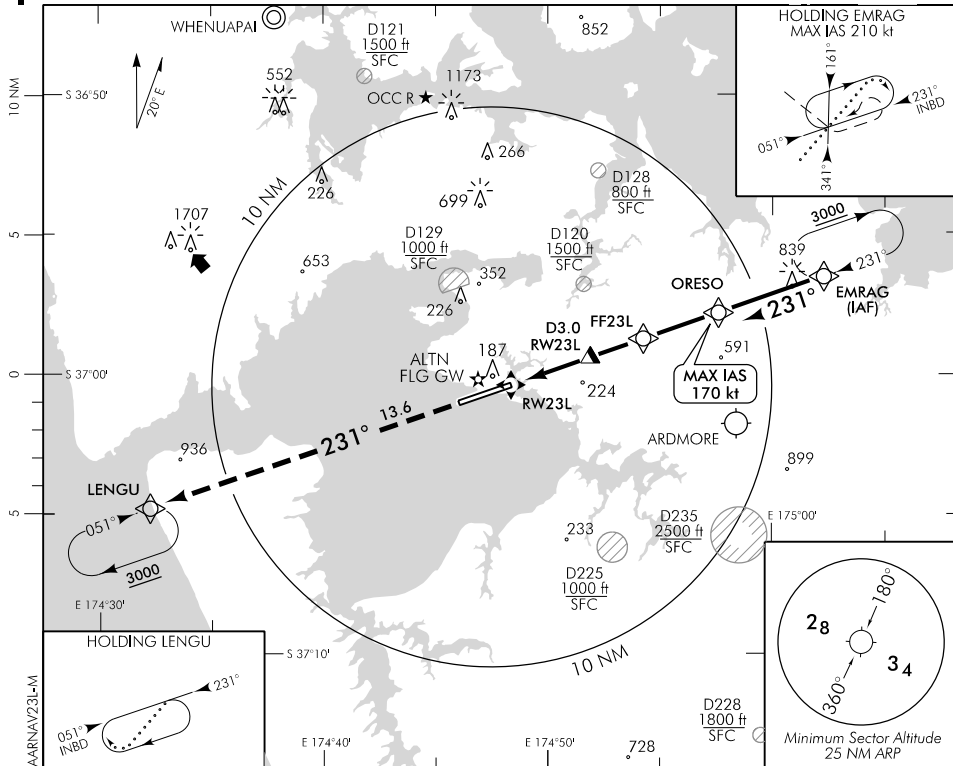
# AUCKLAND

RNAV (GNSS) Z RWY 23L

AUCKLAND APPROACH: 124.3 129.6

ATIS: 127.8 127.0

TOWER: 118.7 120.95



MISSED APCH: MAX IAS 185 kt. Climb on 231° to LENGU 3000

DISTANCE to WPT	RW23L	0.9	1.1	2	3	4	FF23L	1	2	ORES0
Advisory Altitude 3°	MDA	DA	MDA	710	1030	1350	1670	1980	2300	2560
Category	A		B			C		D		
LNAV/VNAV *	360(337) - 1500									
LNAV	430(407) - 1500									
Circling	560(537) - 1900		560(537) - 2800			#760(737) - 3700		#920(897) - 4600		

\* Valid to AD temperature -5°C. Use of remote QNH NA.

# Circling CAT C and D NA north of RWY

Changes from 10 NOV 16: ATIS call sign amended, TOWER secondary FREQ., D128 and D228 added.

**Effective: 9 NOV 17**