

ELEV 23

CAT C,D

**AUCKLAND**

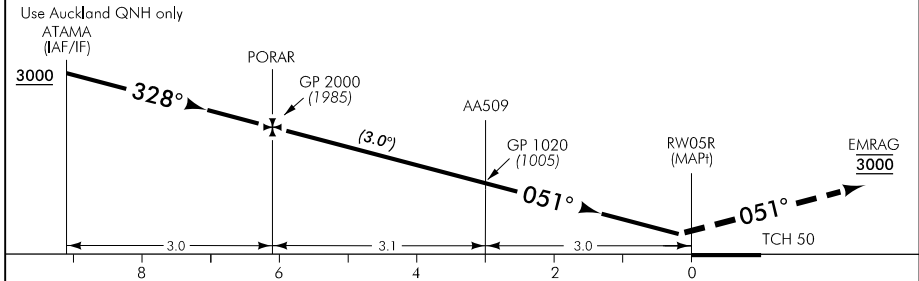
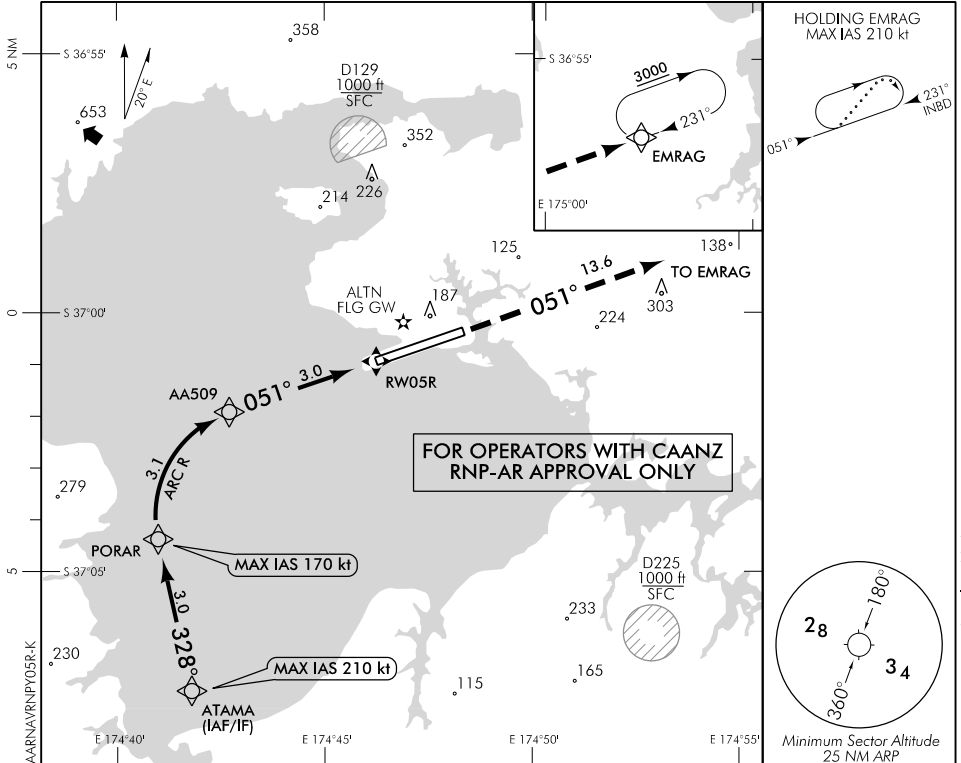
RWY 05R THR ELEV 15

**RNAV (RNP) Y RWY 05R**

AUCKLAND APPROACH: 124.3 129.6

ATIS: 127.8 127.0

TOWER: 118.7 120.95



MISSED APCH: MAX IAS 185 kt. Track 051° to EMRAG 3000

Category	A	B	C	D
RNP 0.30	NA		314(299) - 1500	

1. Procedure NA when AD temperature is below - 5°C or above 47°C
2. RF required
3. RNP 0.3 initial and intermediate segments, RNP 1.0 missed APCH segment

**Effective: 24 MAY 18**

Changes from 9 NOV 17: RNP requirements text Note 3, obstacle added.

ELEV 23

CAT C

# AUCKLAND

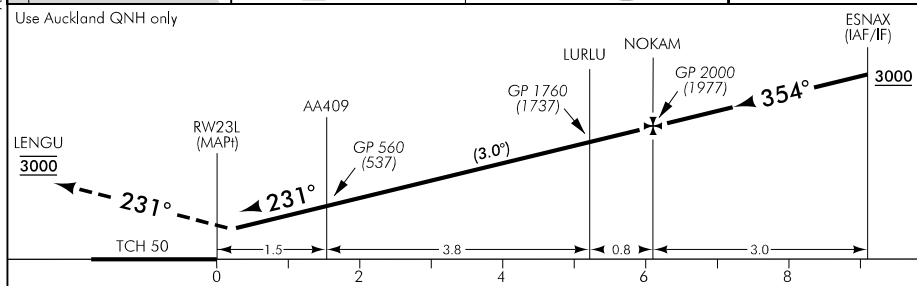
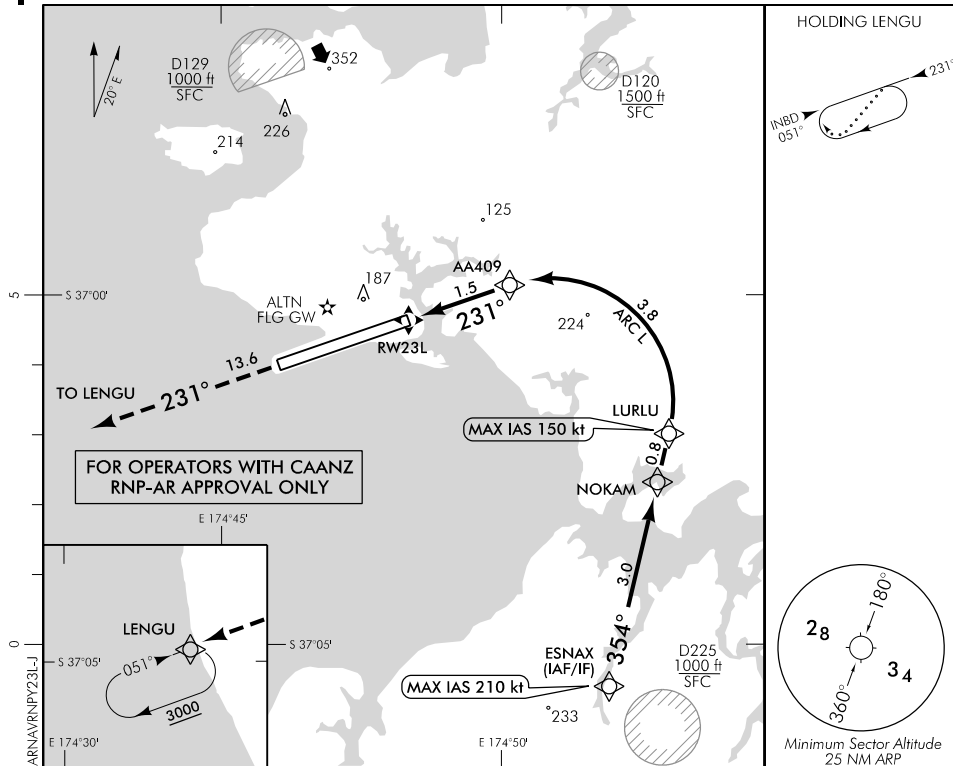
RWY 23L THR ELEV 23

## RNAV (RNP) Y RWY 23L

AUCKLAND APPROACH: 124.3 129.6

ATIS: 127.8 127.0

TOWER: 118.7 120.95



MISSED APCH: MAX IAS 185 kt. Track 231° to LENGU 3000

Category	A	B	C	D
RNP 0.30	NA		326(303) - 1500	NA

1. Procedure NA when AD temperature is below -5°C or above 47°C
2. RF required
3. RNP 1 initial and missed APCH segments

Changes from 10 NOV 16: ATC call sign amended, TOWER secondary FREQ.

**Effective: 9 NOV 17**