

ELEV 23

CAT C,D

**AUCKLAND**

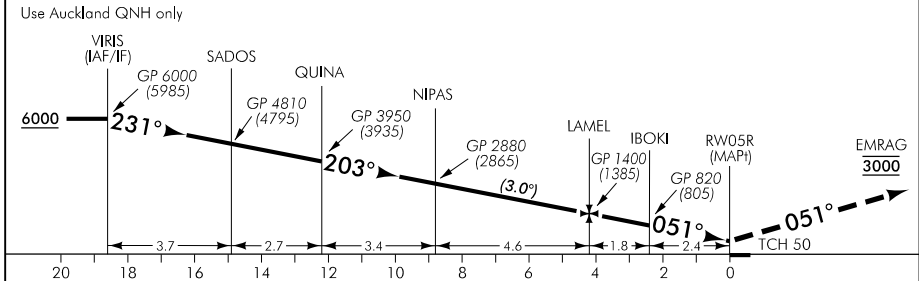
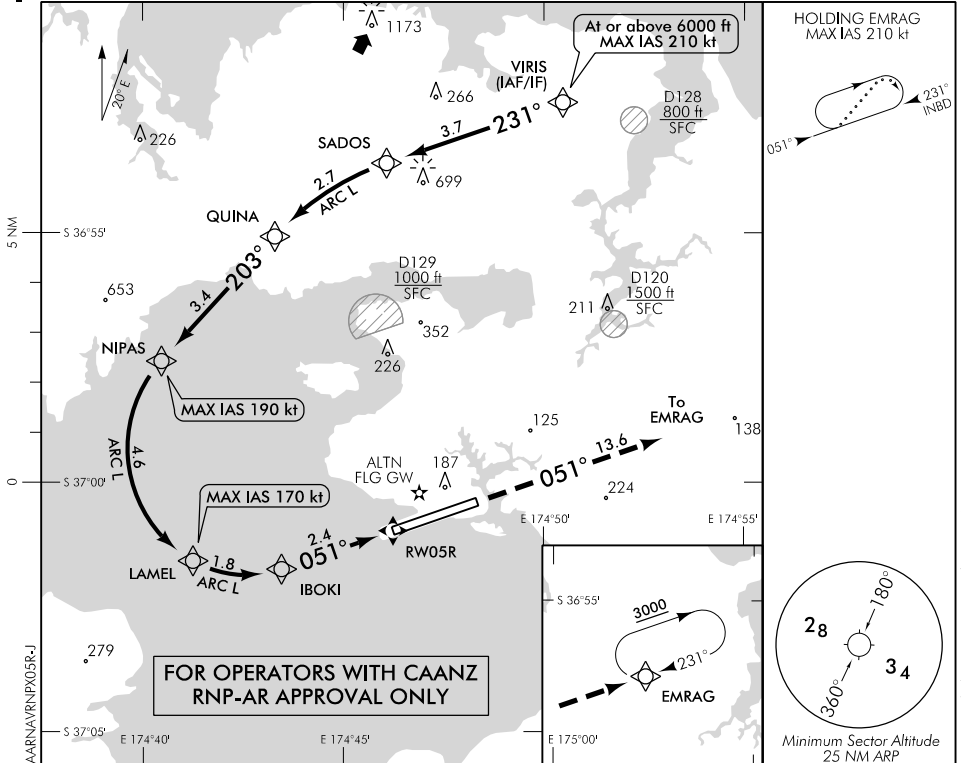
RWY 05R THR ELEV 15

**RNAV (RNP) X RWY 05R**

AUCKLAND APPROACH: 124.3 129.6

ATIS: 127.8 127.0

TOWER: 118.7 120.95



MISSED APCH: MAX IAS 185 kt. Track 051° to EMRAG 3000

Category	A	B	C	D
RNP 0.30	NA		320(305) – 1500	

1. Procedure NA when AD temperature is below -5°C or above 47°C
2. RF required
3. RNP 0.3 initial and intermediate segment, RNP 1.0 missed APCH segment

**Effective: 9 NOV 17**

Changes from 30 MAR 17: ATC call sign amended, TOWER secondary FREQ.

ELEV 23

CAT C,D

**AUCKLAND**

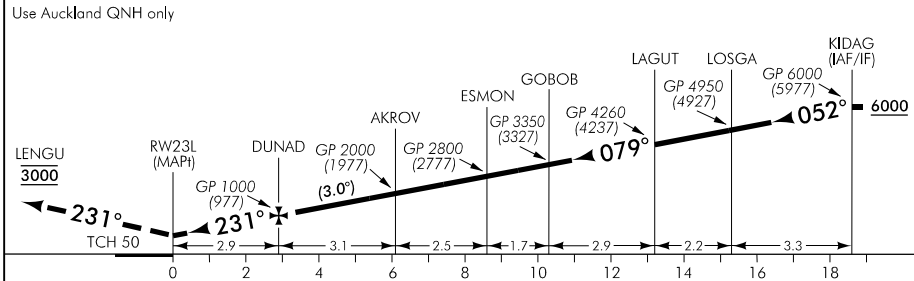
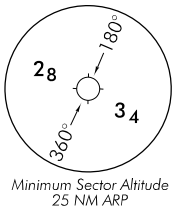
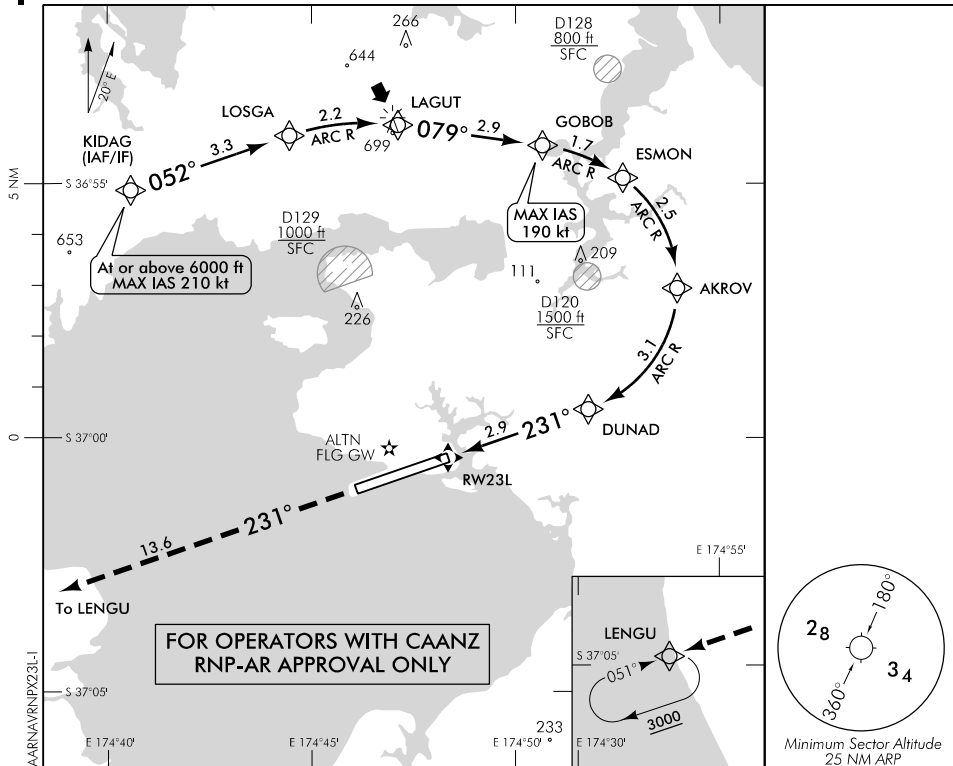
RWY 23L THR ELEV 23

**RNAV (RNP) X RWY 23L**

AUCKLAND APPROACH: 124.3 129.6

ATIS: 127.8 127.0

TOWER: 118.7 120.95



Category	A	B	C	D
RNP 0.30	NA		340(317) – 1500	

1. Procedure NA when AD temperature is below -5°C or above 47°C
2. RF required
3. RNP 0.3 initial segment, RNP 1.0 missed APCH segment

Changes from 30 MAR 17: ATC call sign amended; TOWER secondary FREQ.

**Effective: 9 NOV 17**