

ELEV 23

CAT C,D

**AUCKLAND**

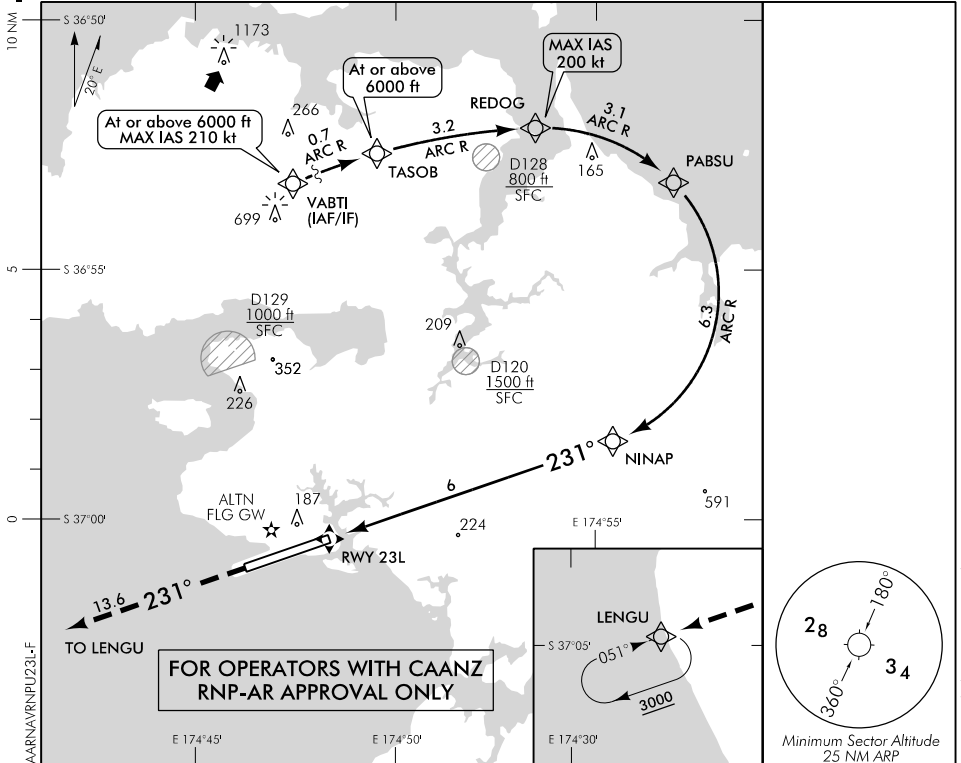
RWY 23L THR ELEV 23

**RNAV (RNP) U RWY 23L**

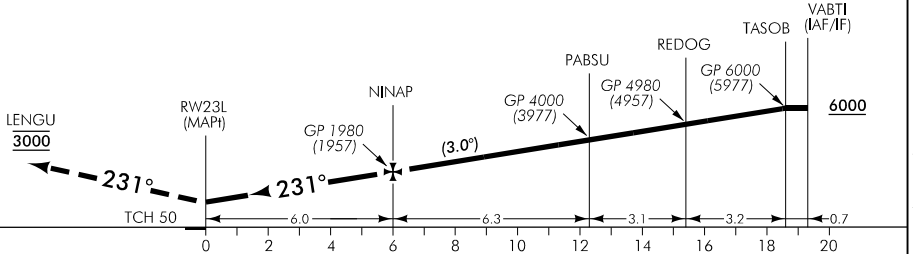
AUCKLAND APPROACH: 124.3 129.6

ATIS: 127.8 127.0

TOWER: 118.7 120.95



Use Auckland QNH only



MISSED APCH: MAX IAS 185 kt. Track 231° to LENGU 3000

Category	A	B	C	D
RNP 0.30	NA		340(317) – 1500	

1. Procedure NA when AD temperature is below -5°C or above 47°C
2. RF required
3. RNP 0.3 initial and intermediate segments, RNP 1.0 missed APCH segment

**Effective: 9 NOV 17**

Changes from 30 MAR 17: ATC call sign amended, TOWER secondary FREQ.

