

ELEV 23

CAT B,C,D

AUCKLAND

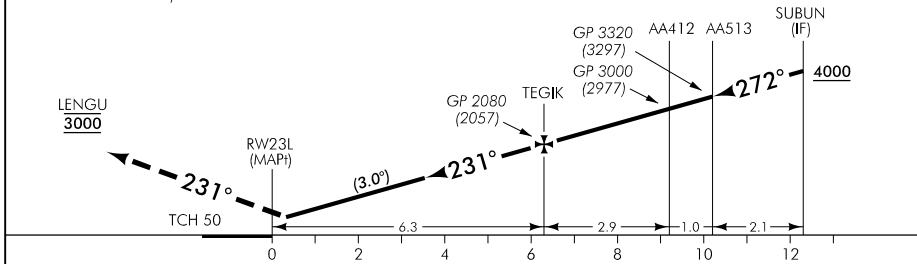
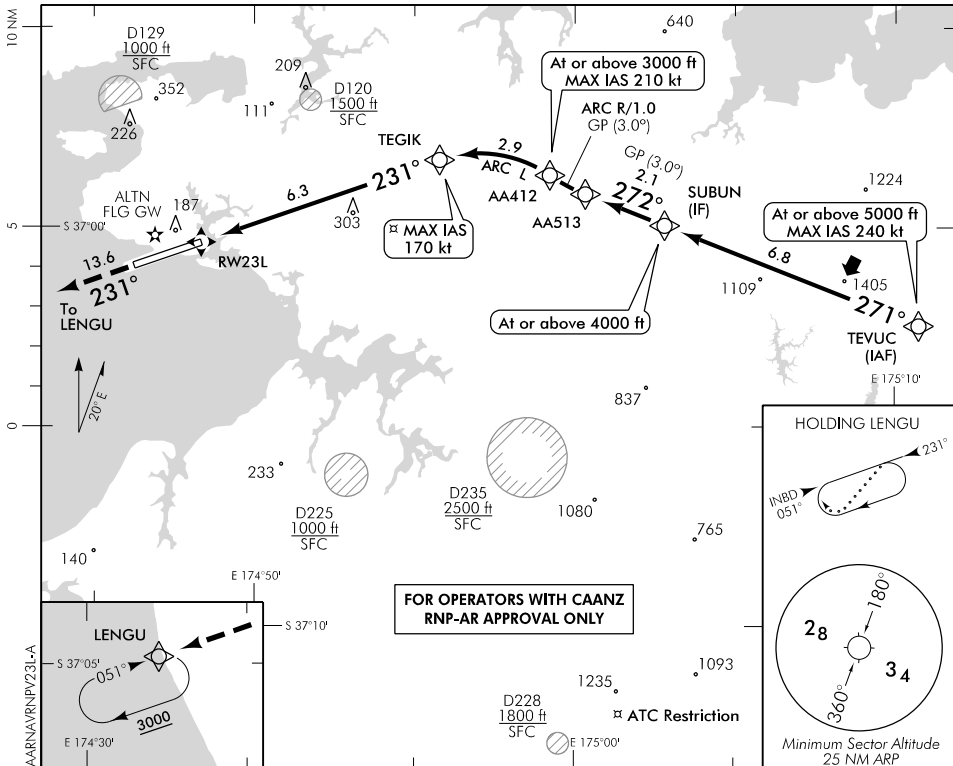
RWY 23L THR ELEV 23

RNAV (RNP) V RWY 23L

AUCKLAND APPROACH: 124.3 129.6

ATIS: 127.8 127.0

TOWER: 118.7 120.95



Category	A	B	C	D
RNP 0.30	NA		420(397) – 1500	
1. Procedure NA when AD temperature is below -5°C or above 47°C 2. RF required 3. RNP 0.3 initial and intermediate segments, RNP 1.0 missed APCH segment				

Effective: 12 SEP 19

ELEV 23

CAT B,C,D

AUCKLAND

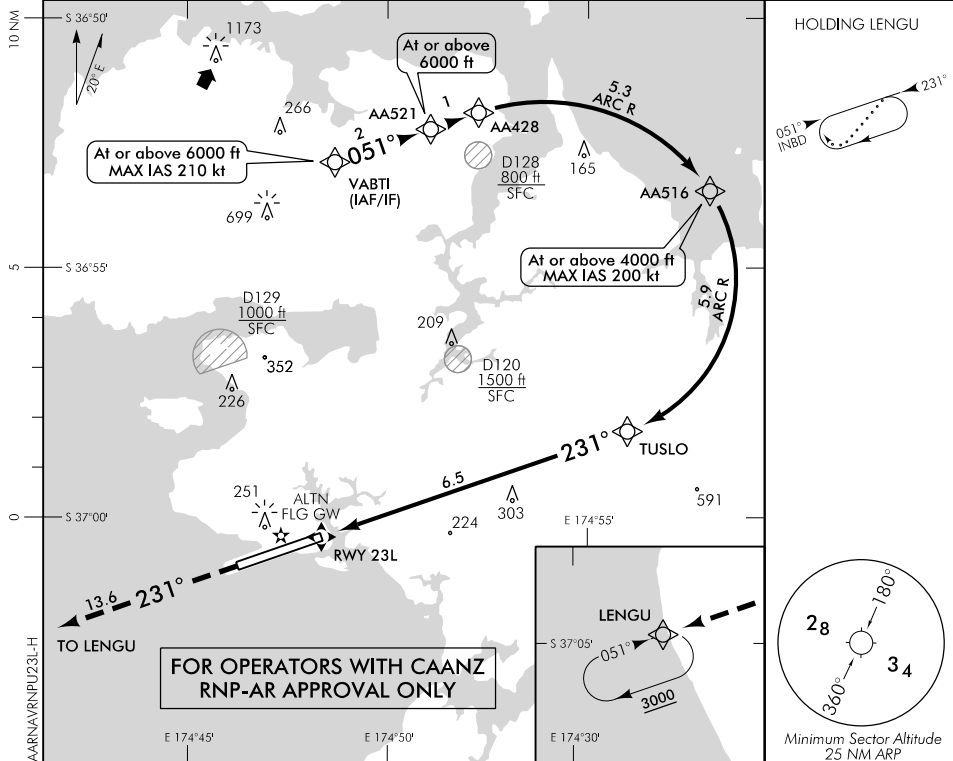
RWY 23L THR ELEV 23

RNAV (RNP) U RWY 23L

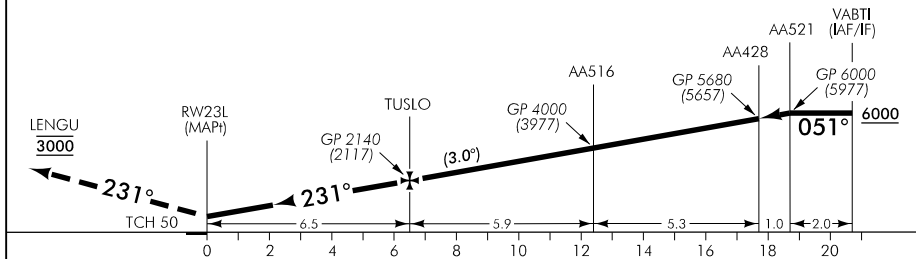
AUCKLAND APPROACH: 124.3 129.6

ATIS: 127.8 127.0

TOWER: 118.7 120.95



Use Auckland QNH only



MISSED APCH: MAX IAS 185 kt. Track 231° to LENGU 3000

Category	A	B	C	D
RNP 0.30	NA		420(397) - 1500	

1. Procedure NA when AD temperature is below -5°C or above 47°C
2. RF required
3. RNP 0.3 initial and intermediate segments, RNP 1.0 missed APCH segment

Changes from 23 MAY 19: Obstacle added; minima, pagination.

Effective: 12 SEP 19