

ELEV 23

AUCKLAND

NZAA

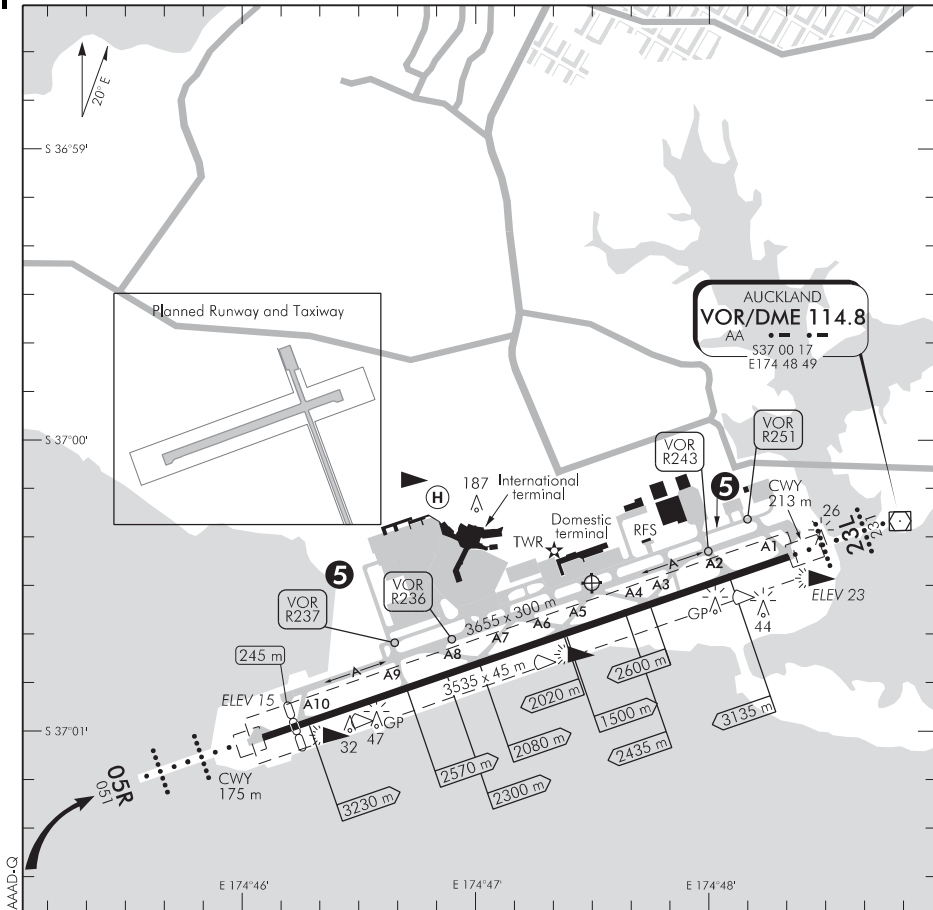
AERODROME — RWY 05R/23L OPERATIONS (1)

TOWER: 118.7 120.95

DELIVERY: 128.2

GROUND: 121.9

ATIS: 127.8 127.0



AAAD-G

Changes from 20 JUL 17: TOWER secondary FREQ.

1. Circuit: RWY 05R — Right hand RWY 23L — Left hand
 Unless otherwise instructed, ATC circuit altitudes are:
 All Jets 1500 ft AMSL All other ACFT 1000 ft AMSL
2. ATC Speed Requirements:
 Arriving IFR: Unless otherwise approved or assigned by ATC, aircraft must fly an instrument approach at the promulgated speeds with a MNM 150 kt IAS to 5 NM on final approach. If unable to comply with the promulgated speeds, advise ATC with preferred speed.
 VFR in circuit: approach speed of not less than 90 kt IAS when above 300 ft AMSL.
3. **CAUTION:** Bird hazard. Refer to NZAA AD 2.23.
4. Grass areas are not available for any aircraft use. All operations are to be confined to runways, taxiways and apron areas.
5. A portion of the eastern end of TWY B and the northern end of TWY L are not visible from TWR. See Ground Movements — RWY 05R/23L for detail.
6. Wide body aircraft exiting RWY 05R/23L via TWY A3, A4, A5, A6, A7 and A8 must use rapid exit taxiways. Hard left or hard right turns off RWY 05R/23L are not available.

(continued)

Effective: 9 NOV 17

S 37 00 29 E 174 47 30

© Civil Aviation Authority

AUCKLAND AERODROME — RWY 05R/23L OPERATIONS (1)

AUCKLAND

AUCKLAND**AERODROME — RWY 05R/23L OPERATIONS (2)**

7. 180 degree turns on the runway for heavy (wide-body) aircraft are only approved in the western turning bay.
8. Holding positions on TWY A1 to TWY A8 inclusive are not available during code F (A380, 748 and AN124) aircraft take-offs or landings. Refer to pages AD 2-53.13 to 53.16.
9. Code F aircraft entering or vacating RWY 05R/23L should use TWY A1A or A10. TWY A1 and A9 may be used with prior notice from ATC. TWY A2, A3 and A8 available to approved code F operators in accordance with code F supplementary procedures.
10. Use of the western extension for RWY 05R starter extension is not available.