

ELEV 31 (HELIPAD)

NZAA

TOWER: 118.7 120.95

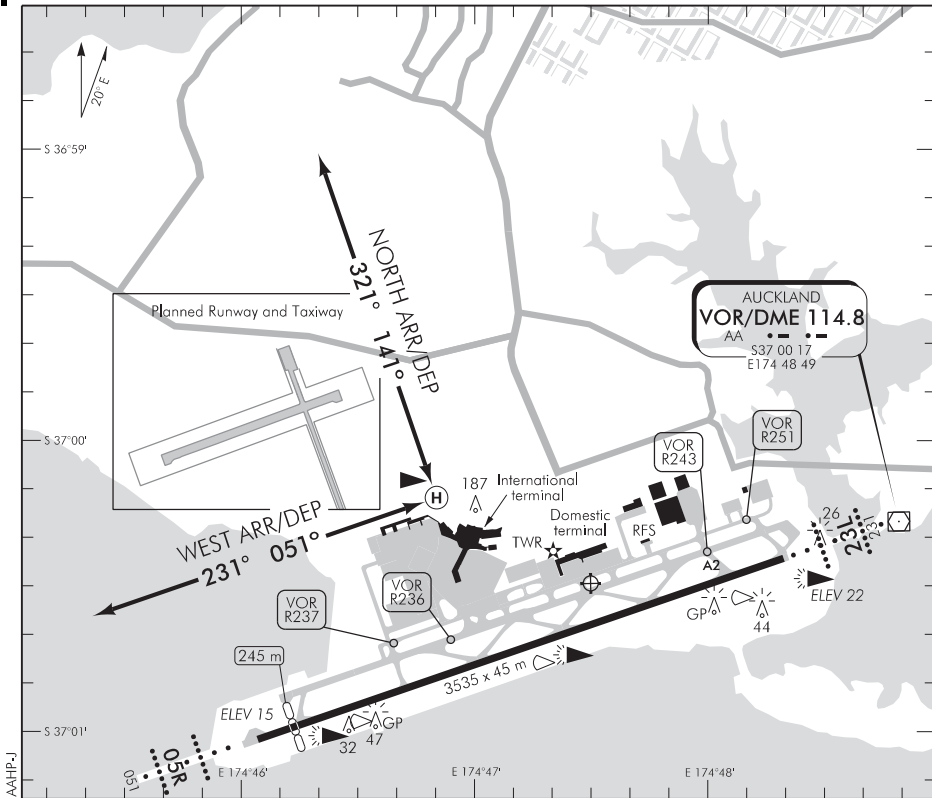
DELIVERY: 128.2

GROUND: 121.9

ATIS: 127.8 127.0

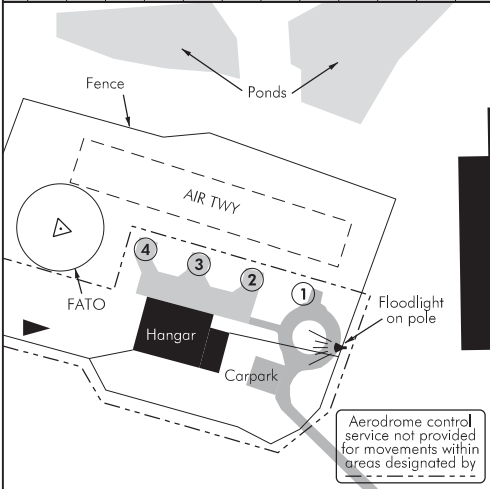
# AUCKLAND

## HELIPORT PROCEDURES



AAHP-J

Changes from 14 SEP 17: TOWER secondary FREQ, control service line added, new note 7.



1. **CAUTION:** Hotel (187 ft) approximately 100 m SE of heliport.
2. Heliport use by arrangement with administrator, Eagleflight Aviation. Refer to [www.heliport.co](http://www.heliport.co) for further information.
3. Daylight operations only.
4. For passenger operations only.
5. Helicopter operations not permitted to other areas of the aerodrome without prior approval from Apron OPS 123.0 or Ph (09) 256 8990.
6. Heliport landing notifications to be submitted online at [www.heliport.co](http://www.heliport.co)
7. All helicopter movements should arrive/depart using the FATO and air taxi to/from the helipads via the air taxiway.

S 37 00 10 E 174 46 52 (HELIPAD)

**Effective: 9 NOV 17**

**FATO/TLOF**

	SIZE	SFC	STRENGTH	MARKINGS
FATO	Diameter 28.5 m	Gr		△
TLOF	Diameter 8 m	CONC	10,000	Ⓜ

**LIGHTING**

Nil

**FACILITIES**

Fuel: Z Energy Jet A1, Access via Z Card

**SUPPLEMENTARY**

Operator: Auckland International Airport Ltd  
Auckland International Airport

Administrator: Eagleflight Aviation  
Auckland International Airport  
Tel +64 9 965 9900

Designated security aerodrome

**ATC PROCEDURES**

Refer Auckland VFR Arrival/Departure Procedures — ALL RWY

**Arrival**

For helicopters landing at Auckland Heliport.

Prior to entering Auckland CTR/C, contact Auckland Tower on 118.7 MHz and give abbreviated position report:

- aircraft callsign
- position relative to a Visual Reporting Point
- altitude

**Note:** *If a clearance is not available, remain outside Auckland CTR/C.*

Plain language instructions or a specified VFR Arrival Procedure will be issued. Approaching the Heliport, intercept the North or West final approach at minimum 500 ft, and track to the FATO.

**Communications Failure**

Within Auckland CTR/C — if already within the North Sector, continue as instructed to the Heliport, otherwise leave the Auckland CTR/C via the shortest route. Do not cross the instrument sector. **Squawk 7600. Remain clear of Instrument Sector and do not cross the runway.** Proceed to an alternative aerodrome or heliport and report arrival to Auckland Tower.

**Departure**

Prior to start, contact DELIVERY 128.2 for VFR departure route instructions, advising location.

Contact TOWER 118.7 MHz for start and advise when ready for air taxi. When cleared for take-off, from the FATO track on the North or West departure to 500 ft minimum before turning to intercept the assigned departure procedure.

**General**

ATC may instruct helicopters to hold over a visual reporting point for the purpose of providing separation with IFR flights. Helicopters should avoid flying at low altitudes over buildings and other structures on the airport.

N.B Heliport is not visible from the Tower. Under camera surveillance.