

ELEV 23

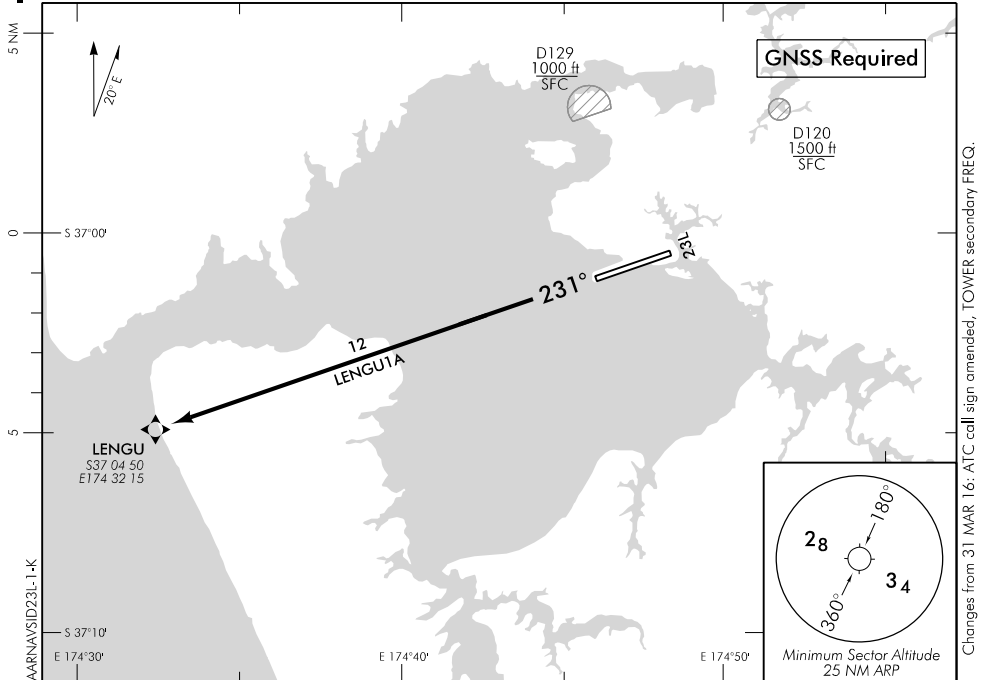
NZAA

AUCKLAND**RNAV SID RWY 23L (1)**

AUCKLAND APPROACH: 124.3 129.6

TOWER: 118.7 120.95

ATIS: 127.8 127.0



Changes from 31 MAR 16: ATC call sign amended, TOWER secondary FREQ.

ALL DEPARTURES

Contact AUCKLAND APPROACH 124.3 MHz as soon as practicable prior to 1500 ft, or as instructed

- Note
1. Minimum net climb gradient 3.3% (200 ft/NM) unless higher stated
 2. ATC requirement:

CAT B aircraft speed restriction MNM 150 kt MAX 170 kt to LENGU

If unable to comply advise Delivery prior to start-up

Evaluated Climb Sector:

Within 25 NM in any direction except R360–R030 AA VOR 3 to 5 DME below 1500 ft

RWY 23L**LENGU ONE ALFA DEPARTURE – RNAV (LENGU1A)**

MNM net climb gradient 4.1% (250 ft/NM) to 2000 ft
(to ensure controlled airspace containment)

- Track direct to LENGU fly-over WPT
- Intercept cleared route or as instructed by ATC

OCEANIC TRANSITION

For flights that will cross the NZCC/NZZO FIR BDRY on any track from GULUT through north to IBESO – FL260 or above

- At completion of SID track direct to Oceanic boundary point by the most direct turn or as directed by radar
- Cleared level FL250
- Expect further clearance to filed level prior to 100 AA
- Cross NZCC/NZZO FIR BDRY at cleared level or advise ATC if unable

Effective: 9 NOV 17

ELEV 23

CAT A,B,C,D

NZAA

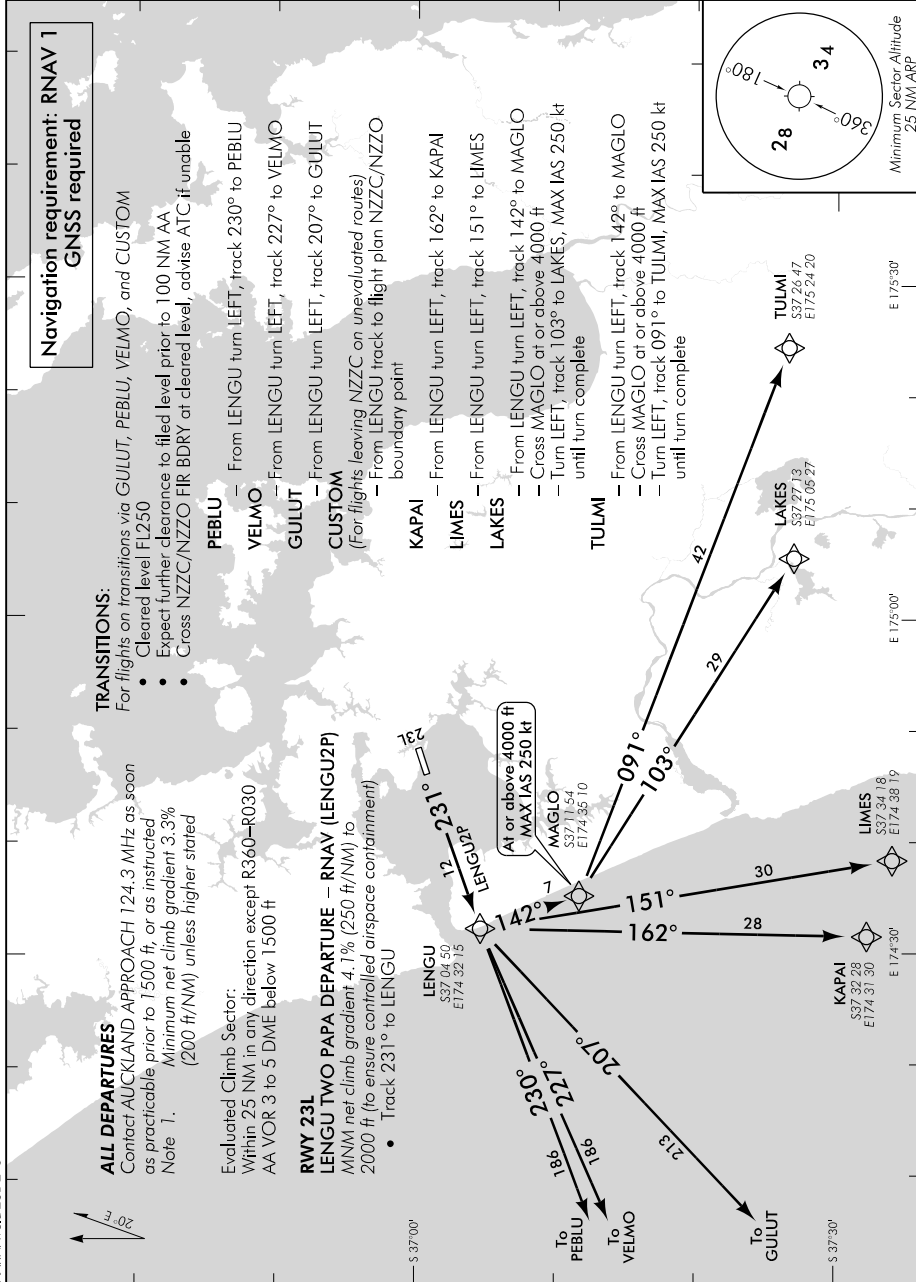
AUCKLAND RNAV SID RWY 23L (2)

AUCKLAND APPROACH: 124.3 129.6

TOWER: 118.7 120.95

ATIS: 127.8 127.0

AARNVAD23L-2-G



Effective: 9 NOV 17