

ELEV 23

CAT A,B,C,D

AUCKLAND

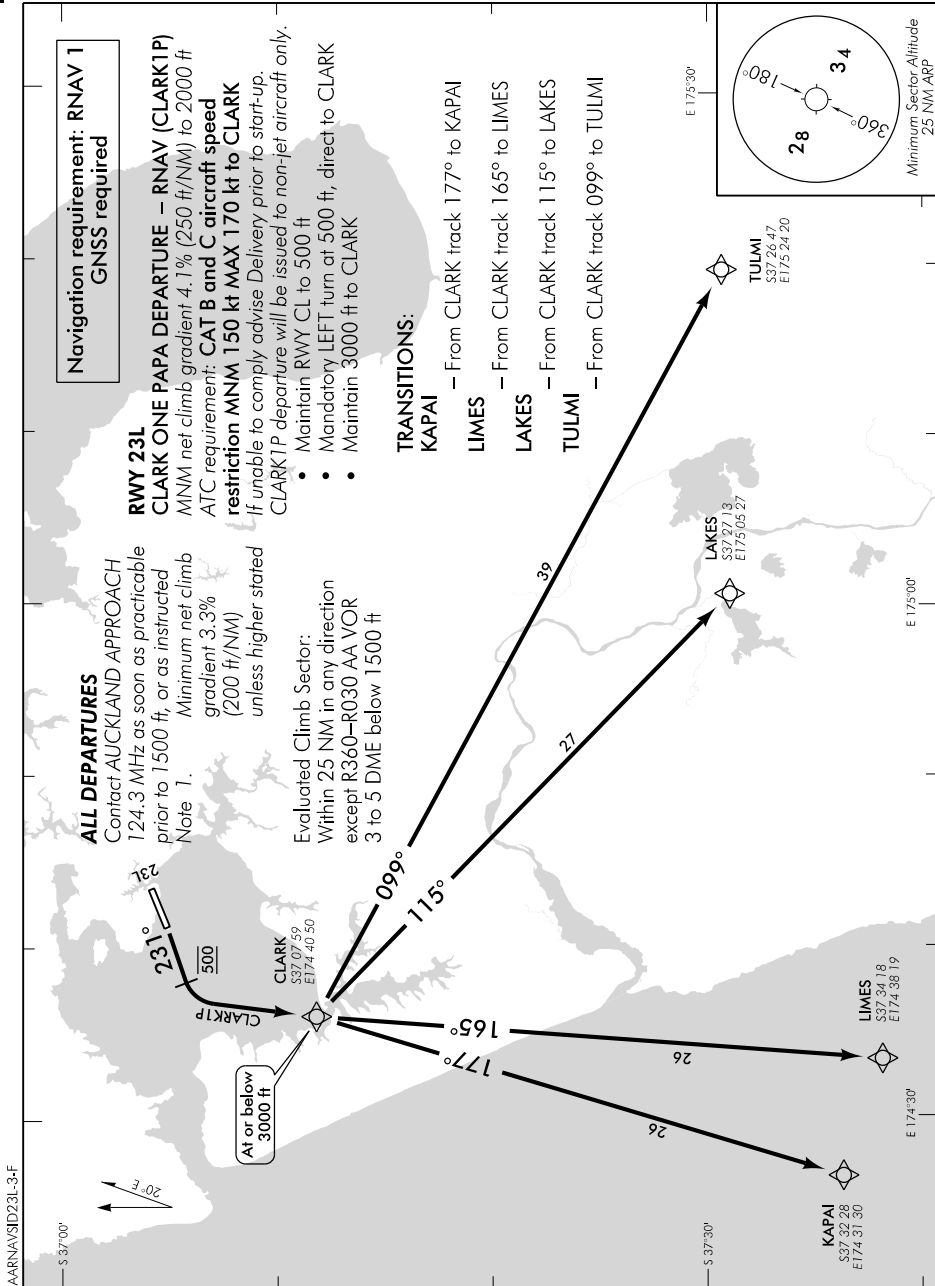
NZAA

RNAV SID RWY 23L (3)

AUCKLAND APPROACH: 124.3 129.6

TOWER: 118.7 120.95

ATIS: 127.8 127.0



Changes from 31 MAR 16: ATC call sign amended, TOWER secondary FREQ.

Effective: 9 NOV 17

ELEV 23

CAT A,B,C,D

AUCKLAND

NZAA

RNAV SID RWY 23L (4)

AUCKLAND APPROACH: 124.3 129.6

TOWER: 118.7 120.95

ATIS: 127.8 127.0

Navigation requirement: RNAV 1
GNSS required

ALL DEPARTURES

Contact AUCKLAND APPROACH 124.3 MHz as soon as practicable prior to 1500 ft, or as instructed

- Note
1. Minimum net climb gradient 3.3% (200 ft/NM) unless higher stated
 2. ATC requirement: **CAT B and C aircraft speed restriction MNM 150 kt MAX 170 kt to PEEHA**
If unable to comply advise Delivery prior to start-up
 3. PEEHA1P departure will be issued to non-jet aircraft only

Evaluated Climb Sector:

Within 25NM in any direction except R360-R030
AA VOR 3 to 5 DME below 1500 ft

RWY 23L

PEEHA ONE PAPA DEPARTURE – RNAV (PEEHA1P)

MNM net climb gradient 6.0% (370 ft/NM) to 3000 ft (to ensure controlled airspace containment)

- Maintain RWY CL to 500 ft
- RIGHT turn at MNM 500 ft after crossing the RWY end
- Track direct to PEEHA
- Maintain 3000 ft to PEEHA

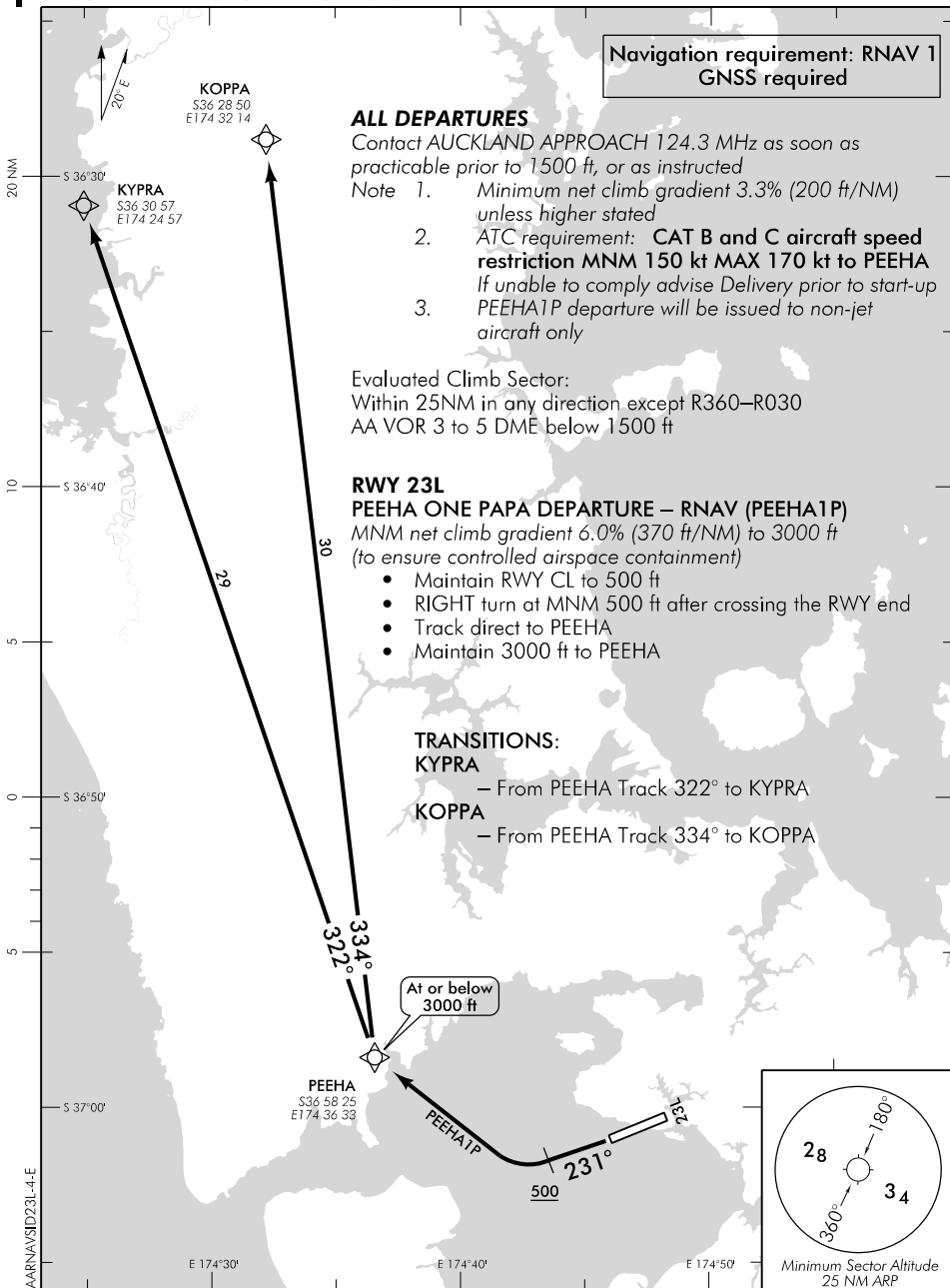
TRANSITIONS:

KYPR

– From PEEHA Track 322° to KYPR

KOPPA

– From PEEHA Track 334° to KOPPA



Changes from 31 MAR 16: ATC call sign amended, TOWER secondary FREQ.

Effective: 9 NOV 17