

ELEV 23

CAT A,B,C,D

AUCKLAND

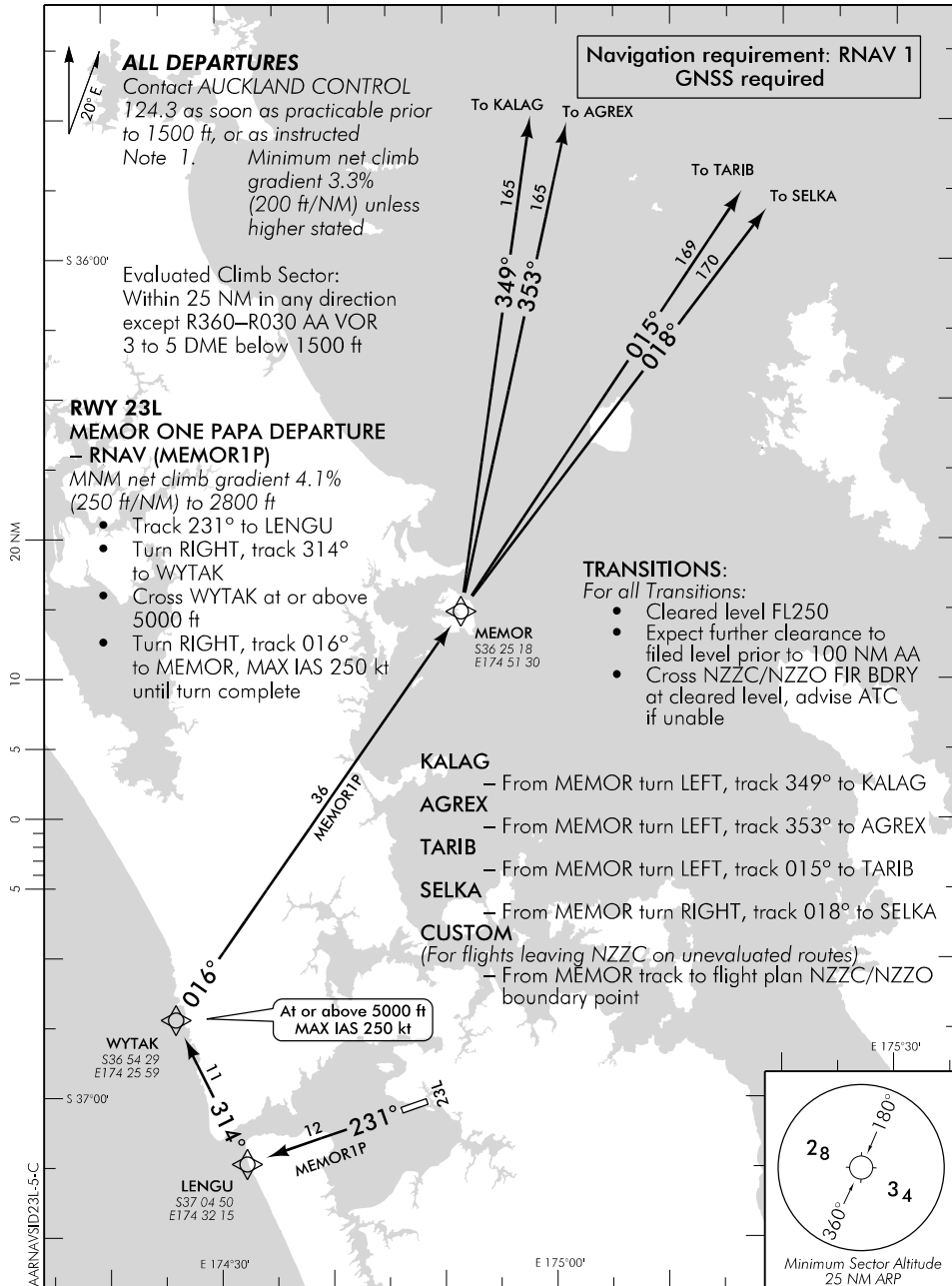
NZAA

RNAV SID RWY 23L (5)

AUCKLAND CONTROL: 124.3 129.6

TOWER: 118.7 120.8

ATIS: 127.8 127.0



Changes from 4 FEB 16: Page colour, navigation requirement added.

Effective: 31 MAR 16

ELEV 23

CAT A,B,C,D

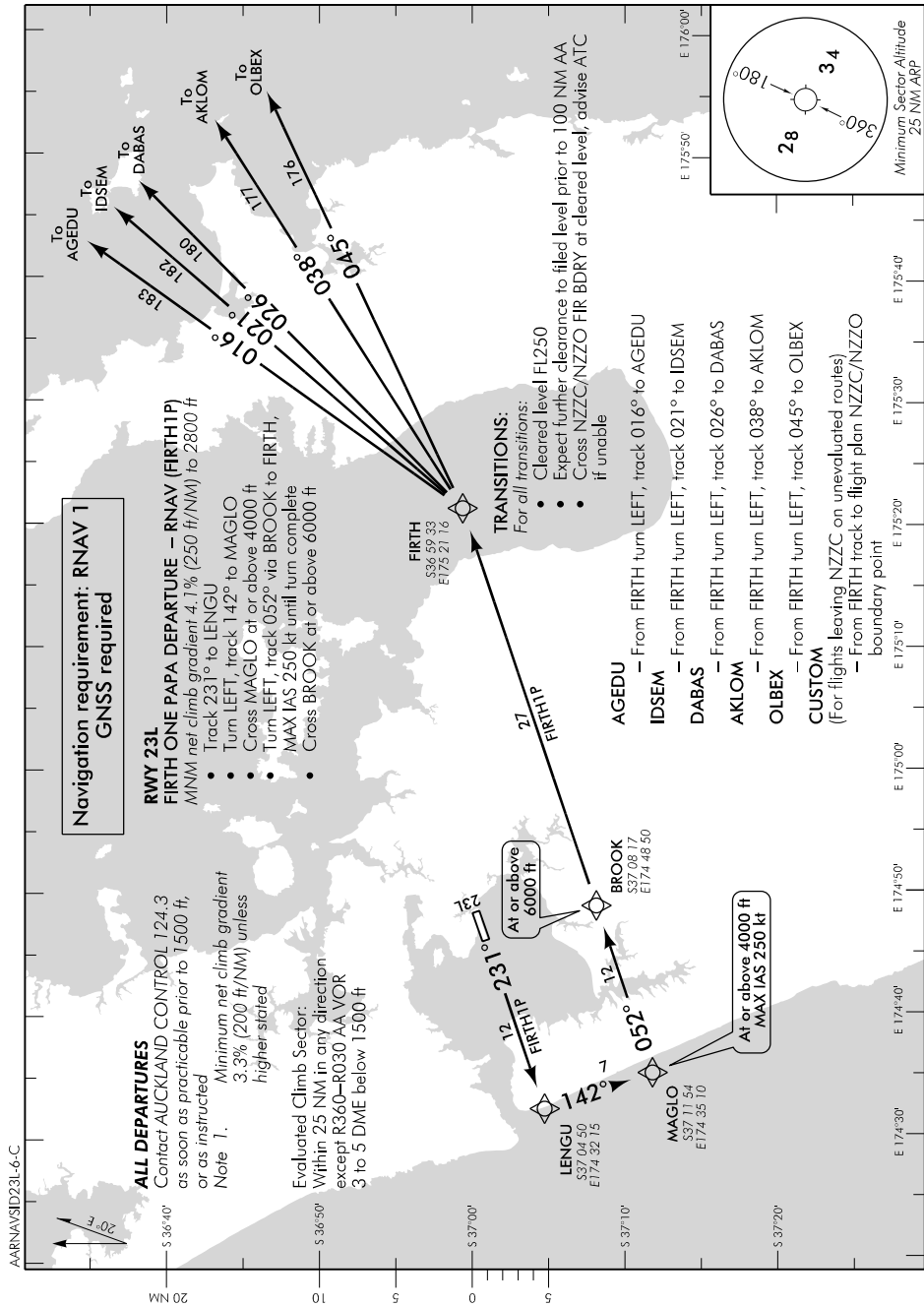
NZAA

AUCKLAND RNAV SID RWY 23L (6)

AUCKLAND CONTROL: 124.3 129.6

TOWER: 118.7 120.8

ATIS: 127.8 127.0



Changes from 4 FEB 16: Page colour, navigation requirement added.

Effective: 31 MAR 16