

ELEV 23

CAT A,B,C,D

**AUCKLAND**

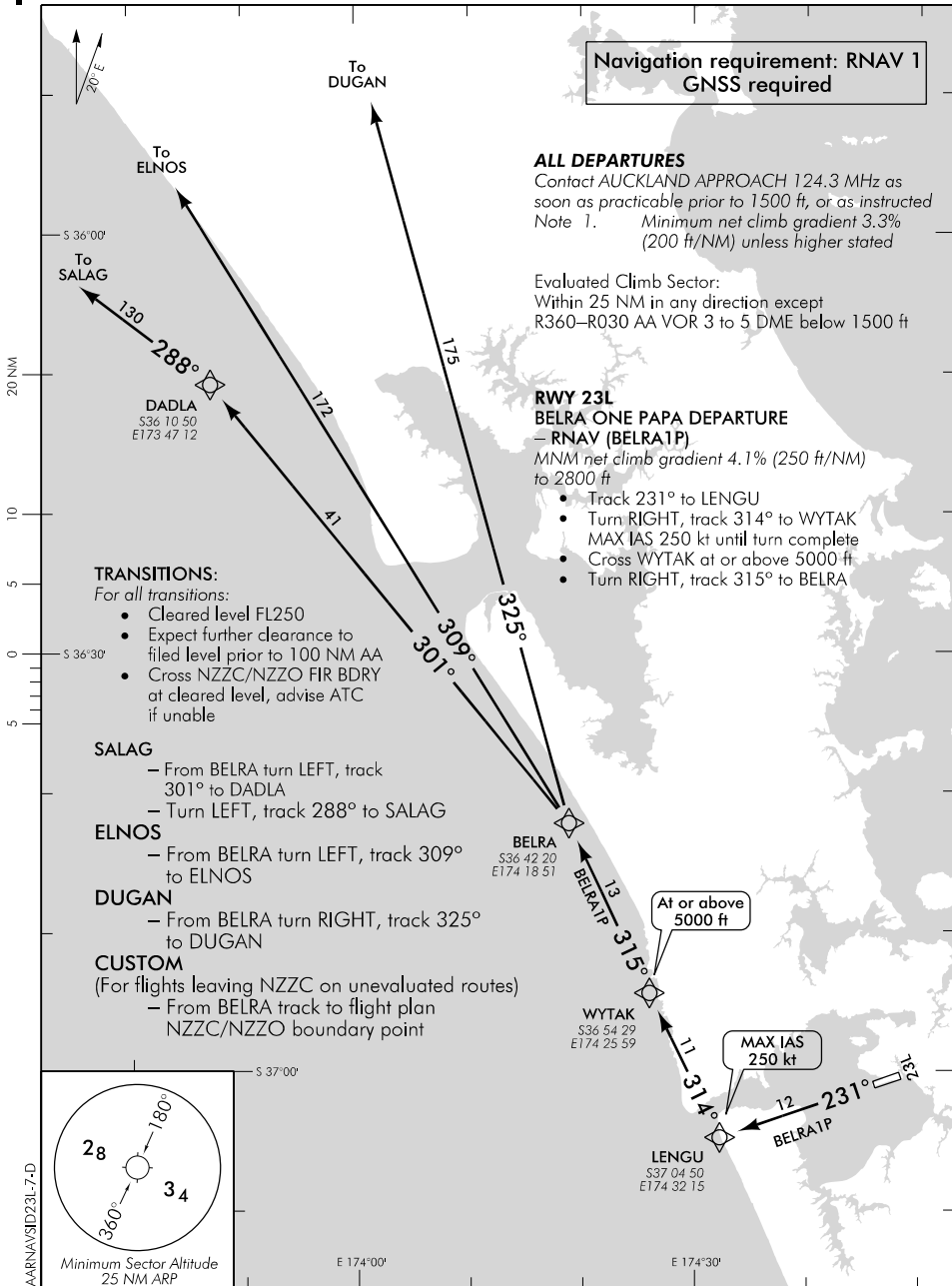
NZAA

**RNAV SID RWY 23L (7)**

AUCKLAND APPROACH: 124.3 129.6

TOWER: 118.7 120.95

ATIS: 127.8 127.0



Navigation requirement: RNAV 1  
GNSS required

**ALL DEPARTURES**

Contact AUCKLAND APPROACH 124.3 MHz as soon as practicable prior to 1500 ft, or as instructed  
Note 1. Minimum net climb gradient 3.3% (200 ft/NM) unless higher stated

Evaluated Climb Sector:  
Within 25 NM in any direction except R360-R030 AA VOR 3 to 5 DME below 1500 ft

**RWY 23L  
BELRA ONE PAPA DEPARTURE  
- RNAV (BELRA1P)**

MNM net climb gradient 4.1% (250 ft/NM) to 2800 ft

- Track 231° to LENGU
- Turn RIGHT, track 314° to WYTAK
- MAX IAS 250 kt until turn complete
- Cross WYTAK at or above 5000 ft
- Turn RIGHT, track 315° to BELRA

**TRANSITIONS:**

For all transitions:

- Cleared level FL250
- Expect further clearance to filed level prior to 100 NM AA
- Cross NZCC/NZZO FIR BDY at cleared level, advise ATC if unable

**SALAG**

- From BELRA turn LEFT, track 301° to DADLA
- Turn LEFT, track 288° to SALAG

**ELNOS**

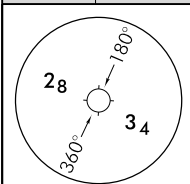
- From BELRA turn LEFT, track 309° to ELNOS

**DUGAN**

- From BELRA turn RIGHT, track 325° to DUGAN

**CUSTOM**

- (For flights leaving NZCC on unevaluated routes)
- From BELRA track to flight plan NZCC/NZZO boundary point



Minimum Sector Altitude  
25 NM ARP

Changes from 31 MAR 16: ATC call sign amended, TOWER secondary FREQ.

ELEV 23

NZAA

CAT A,B,C,D

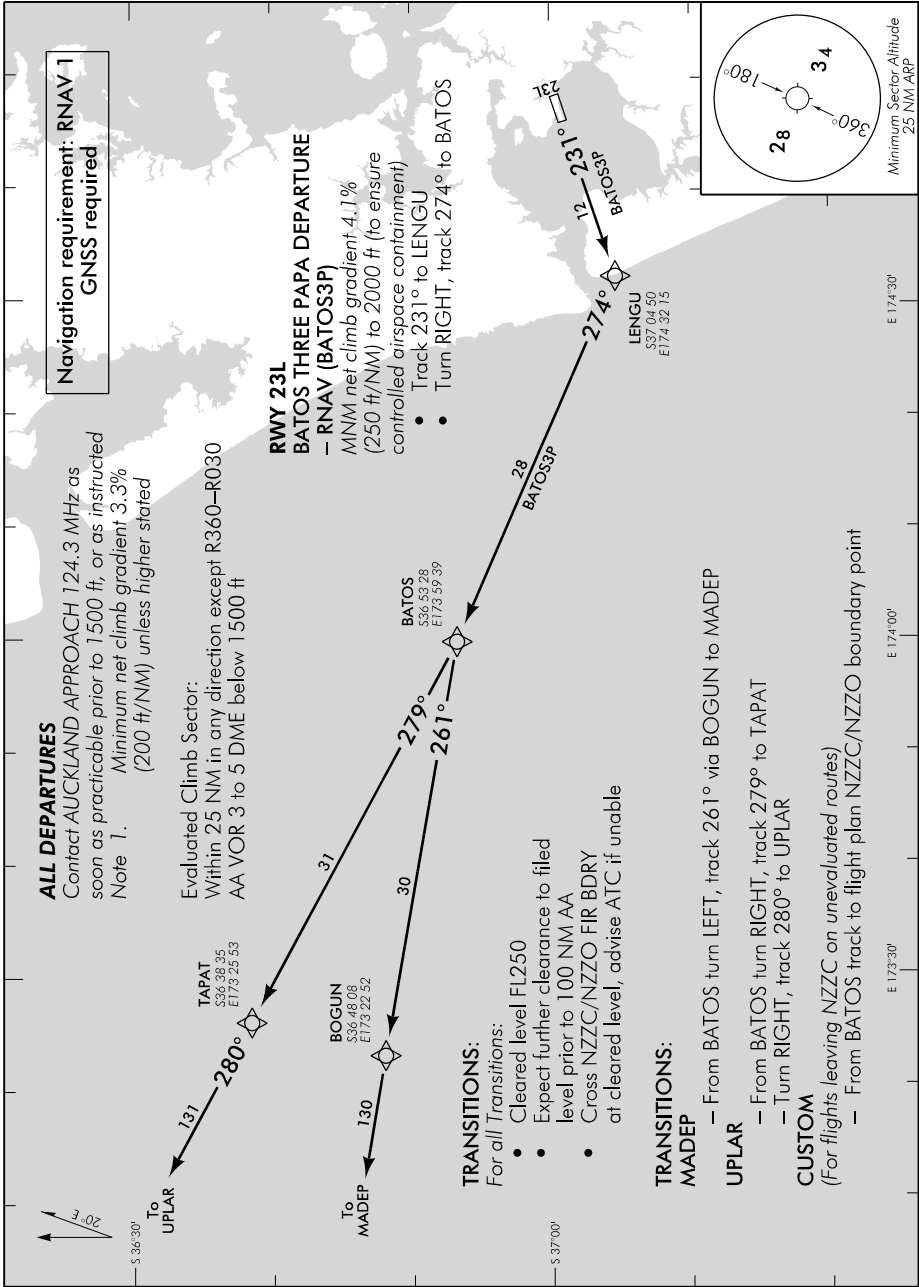
# AUCKLAND RNAV SID RWY 23L (8)

AUCKLAND APPROACH: 124.3 129.6

TOWER: 118.7 120.95

ATIS: 127.8 127.0

AARNV/SID23L-8-E



Changes from 31 MAR 16: ATC call sign amended, TOWER secondary FREQ, PAPI WPT replaced by UPLAR.

**Effective: 9 NOV 17**