

ELEV 23

CAT A,B,C,D

AUCKLAND

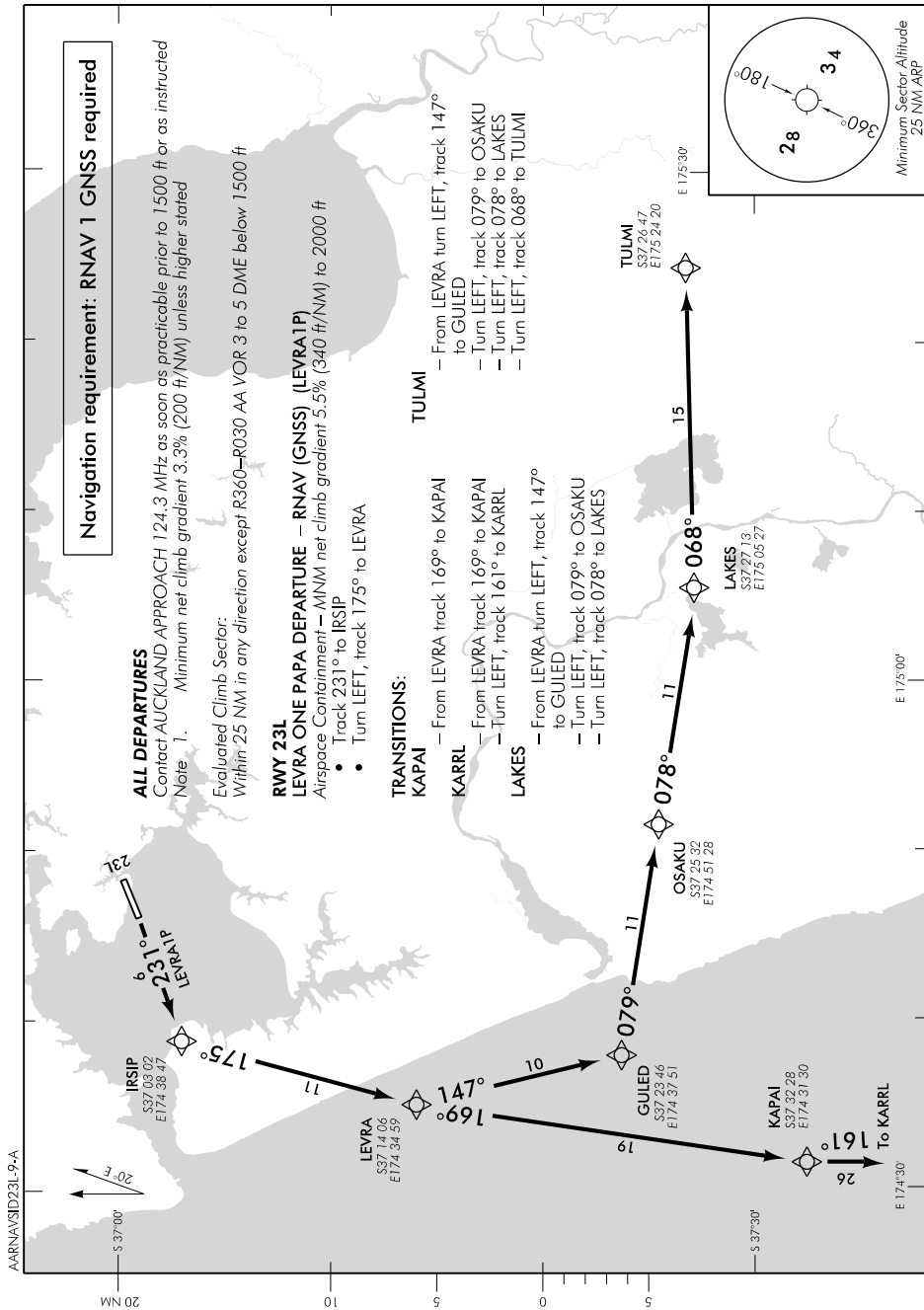
NZAA

RNAV SID RWY 23L (9)

AUCKLAND APPROACH: 124.3 129.6

TOWER: 118.7 120.95

ATIS: 127.8 127.0



Effective: 7 NOV 19

AUCKLAND
RNAV SID RWY 23L (9)

ELEV 23

CAT A,B,C,D

AUCKLAND

NZAA

RNAV SID RWY 23L (10)

AUCKLAND APPROACH: 124.3 129.6

TOWER: 118.7 120.95

ATIS: 127.8 127.0

Navigation requirement: RNAV 1 GNSS required

ALL DEPARTURES

Contact AUCKLAND APPROACH 124.3 MHz as soon as practicable prior to 1500 ft or as instructed

Note 1. Minimum net climb gradient 3.3% (200 ft/NM) unless higher stated

Evaluated Climb Sector:

Within 25 NM in any direction except R360-R030 AA VOR 3 to 5 DME below 1500 ft

RWY 23L

LENGU THREE PAPA DEPARTURE – RNAV (GNSS) (LENGU3P)

MNM net climb gradient 3.4% (210 ft/NM) to 2200 ft
Airspace Containment – MNM net climb gradient 4.8% (300 ft/NM) to 2000 ft

- Track 231° to LENGU

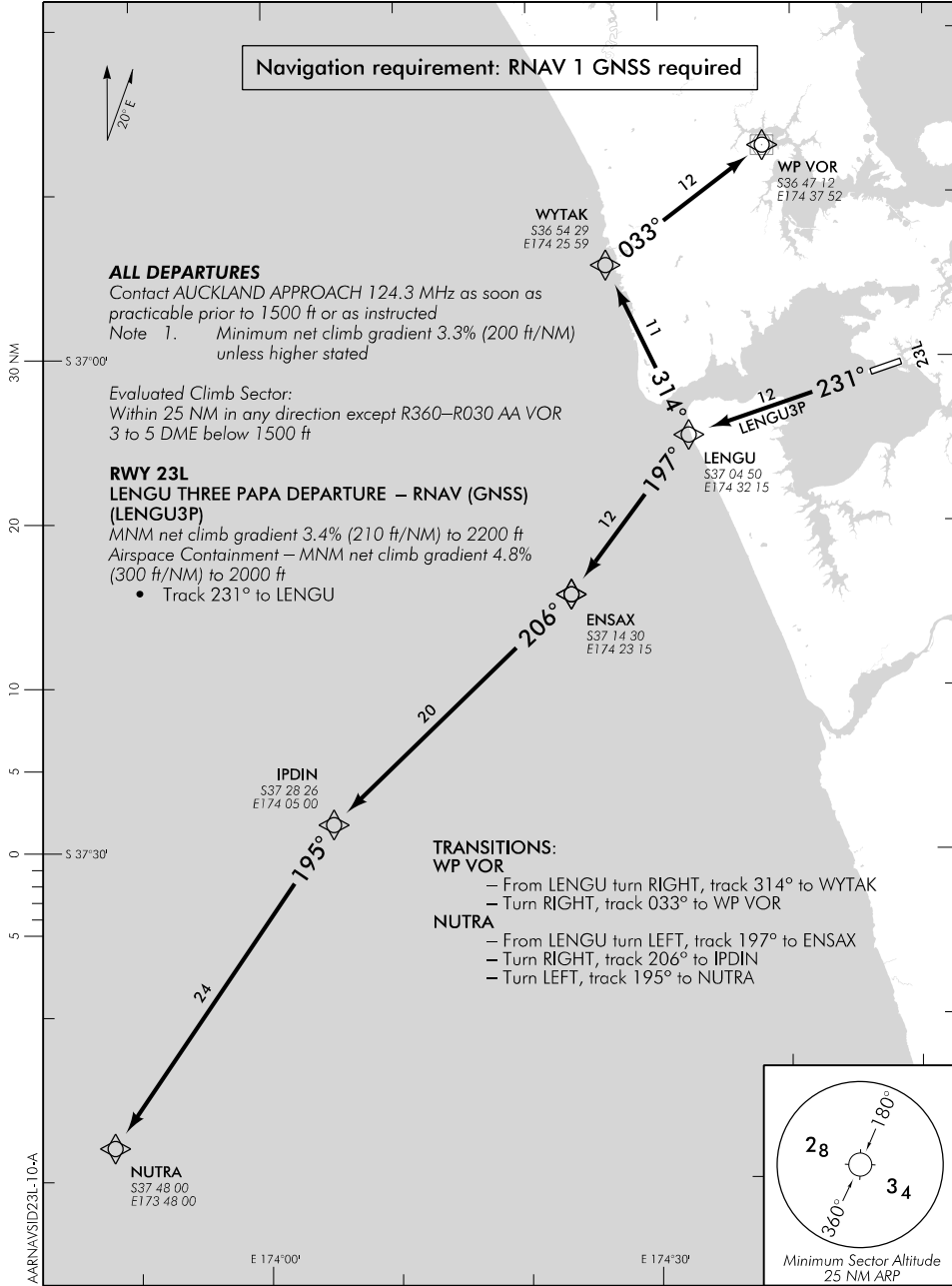
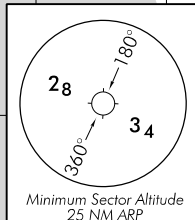
TRANSITIONS:

WP VOR

- From LENGU turn RIGHT, track 314° to WYTAK
- Turn RIGHT, track 033° to WP VOR

NUTRA

- From LENGU turn LEFT, track 197° to ENSAX
- Turn RIGHT, track 206° to IPDIN
- Turn LEFT, track 195° to NUTRA



New chart.

Effective: 30 JAN 20