

ELEV 23

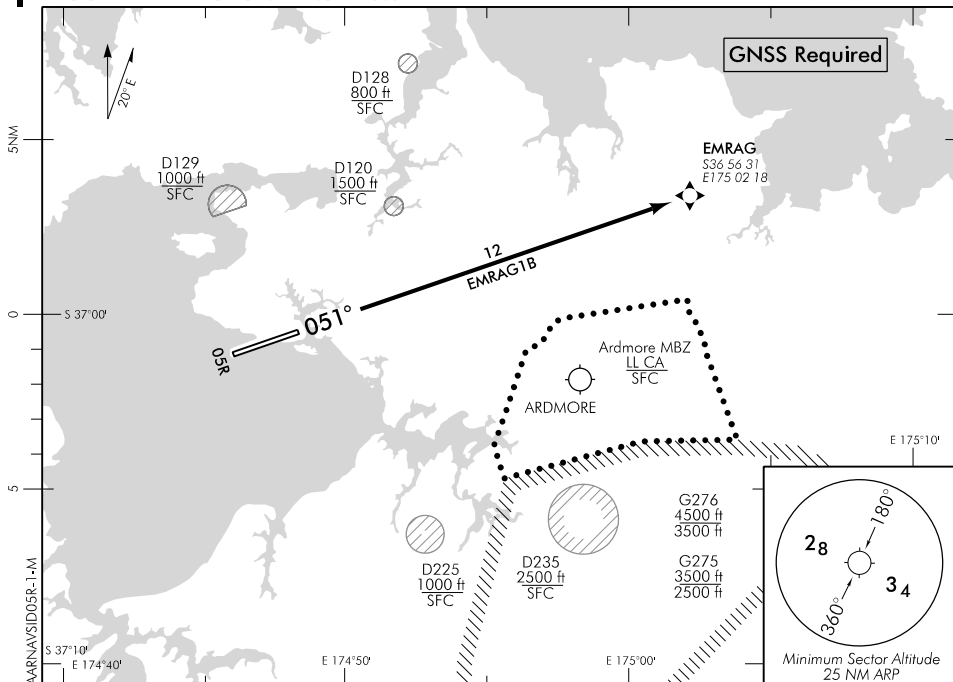
NZAA

**AUCKLAND****RNAV SID RWY 05R (1)**

AUCKLAND APPROACH: 124.3 129.6

TOWER: 118.7 120.95

ATIS: 127.8 127.0

**ALL DEPARTURES**

Contact AUCKLAND APPROACH 124.3 MHz as soon as practicable prior to 1500 ft, or as instructed

- Note 1. Minimum net climb gradient 3.3% (200 ft/NM) unless higher stated  
 2. ATC requirement: **CAT B aircraft speed restriction MNM 150 kt MAX 170 kt to EMRAG.** If unable to comply advise Delivery prior to start-up

Evaluated Climb Sector: Within 25 NM in any direction except R360–R030 AA VOR 3 to 5 DME below 1500 ft

**RWY 05R****EMRAG ONE BRAVO DEPARTURE – RNAV (EMRAG1B)**

MNM net climb gradient 4.4% (270 ft/NM) to 2000 ft (to ensure controlled airspace containment)

- Track direct to EMRAG fly-over WPT
- Intercept cleared route or as instructed by ATC

**OCEANIC TRANSITION**

For flights that will cross the NZCC/NZZO FIR BDY on any track from GULUT through north to IBESO – FL260 or above

- At completion of SID track direct to Oceanic boundary point by the most direct turn or as directed by radar
- Cleared level FL250
- Expect further clearance to filed level prior to 100 AA
- Cross NZCC/NZZO FIR BDY at cleared level or advise ATC if unable

Effective: 9 NOV 17

ELEV 23

CAT A,B,C,D

NZAA

# AUCKLAND

## RNAV SID RWY 05R (2)

AUCKLAND APPROACH: 124.3 129.6

TOWER: 118.7 120.95

ATIS: 127.8 127.0

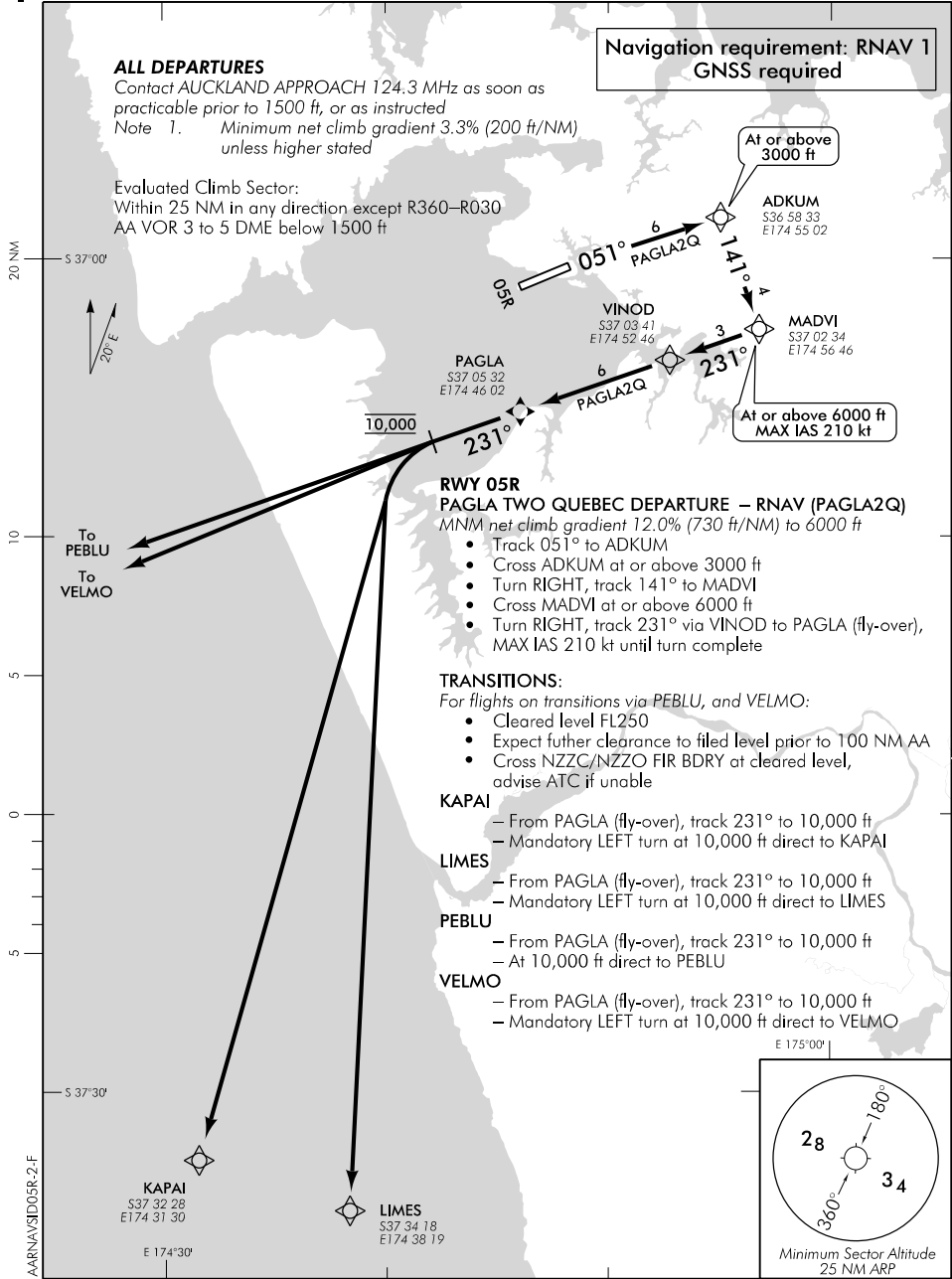
### ALL DEPARTURES

Contact AUCKLAND APPROACH 124.3 MHz as soon as practicable prior to 1500 ft, or as instructed  
Note 1. Minimum net climb gradient 3.3% (200 ft/NM) unless higher stated

### Evaluated Climb Sector:

Within 25 NM in any direction except R360-R030  
AA VOR 3 to 5 DME below 1500 ft

Navigation requirement: RNAV 1  
GNSS required



At or above 3000 ft

At or above 6000 ft  
MAX IAS 210 kt

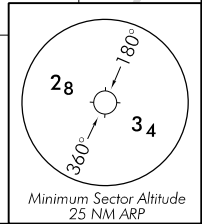
### RWY 05R PAGLA TWO QUEBEC DEPARTURE – RNAV (PAGLA2Q)

- MNM net climb gradient 12.0% (730 ft/NM) to 6000 ft
- Track 051° to ADKUM
  - Cross ADKUM at or above 3000 ft
  - Turn RIGHT, track 141° to MADVI
  - Cross MADVI at or above 6000 ft
  - Turn RIGHT, track 231° via VINOD to PAGLA (fly-over), MAX IAS 210 kt until turn complete

### TRANSITIONS:

- For flights on transitions via PEBLU, and VELMO:
- Cleared level FL250
  - Expect further clearance to filed level prior to 100 NM AA
  - Cross NZCC/NZZO FIR BDRY at cleared level, advise ATC if unable

- KAPAI**  
– From PAGLA (fly-over), track 231° to 10,000 ft  
– Mandatory LEFT turn at 10,000 ft direct to KAPAI
- LIMES**  
– From PAGLA (fly-over), track 231° to 10,000 ft  
– Mandatory LEFT turn at 10,000 ft direct to LIMES
- PEBLU**  
– From PAGLA (fly-over), track 231° to 10,000 ft  
– At 10,000 ft direct to PEBLU
- VELMO**  
– From PAGLA (fly-over), track 231° to 10,000 ft  
– Mandatory LEFT turn at 10,000 ft direct to VELMO



Changes from 31 MAR 16: ATC call sign amended; TOWER secondary FREQ.

Effective: 9 NOV 17