

ELEV 23

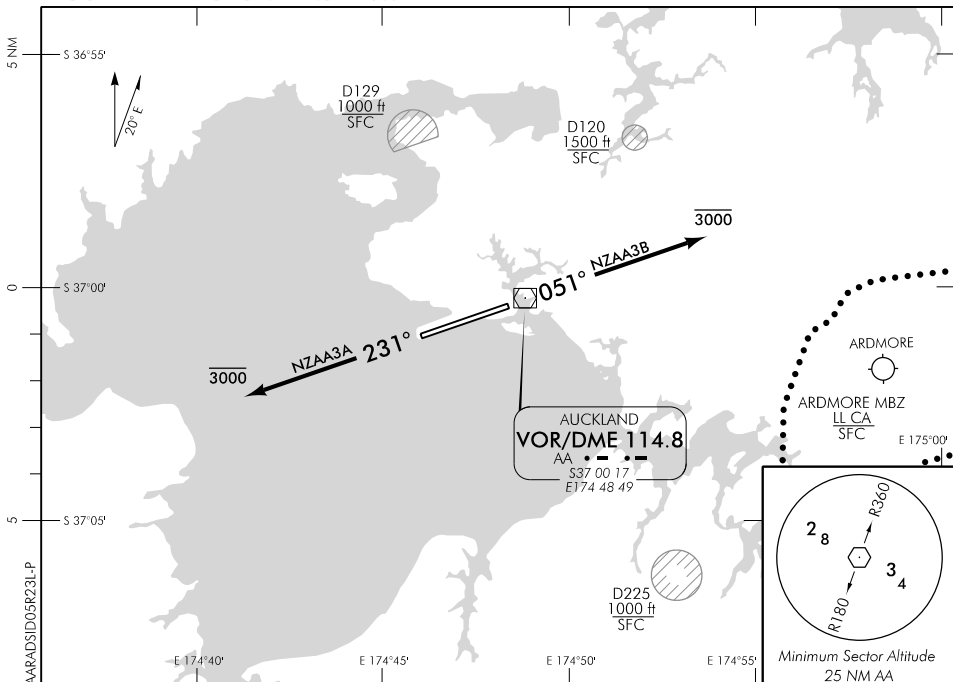
AUCKLAND

RADAR SID RWY 05R/23L

AUCKLAND APPROACH: 124.3 129.6

TOWER: 118.7 120.95

ATIS: 127.8 127.0



ALL DEPARTURES

- Note
1. Contact AUCKLAND APPROACH 124.3 MHz as soon as practicable prior to 1500 ft, or as instructed
 2. Minimum net climb gradient 4.5% (280 ft/NM)
 3. Turns prior to crossing RWY end not authorised

Evaluated Climb Sector:

Within 25 NM in any direction except R360 – R030 AA VOR 3 to 5 DME below 1500 ft

RWY 05R

AUCKLAND THREE BRAVO DEPARTURE – RADAR (NZAA3B)

- Track 051° (RWY CL)
- Maintain 3000 ft
- Expect radar vectors

RWY 23L

AUCKLAND THREE ALFA DEPARTURE – RADAR (NZAA3A)

- Track 231° (RWY CL)
- Maintain 3000 ft
- Expect radar vectors

OCEANIC TRANSITION

For flights that will cross the NZCC/NZZO FIR BDRY on any track from GULUT through north to IBESO – FL260 or above

- At completion of SID track direct to Oceanic boundary point by the most direct turn, or as directed by radar
- Cleared level FL250
- Expect further clearance to filed level prior to 100 AA
- Cross NZCC/NZZO FIR BDRY at cleared level or advise ATC if unable

Effective: 30 JAN 20

