

ELEV 23

CAT A,B,C,D

AUCKLAND

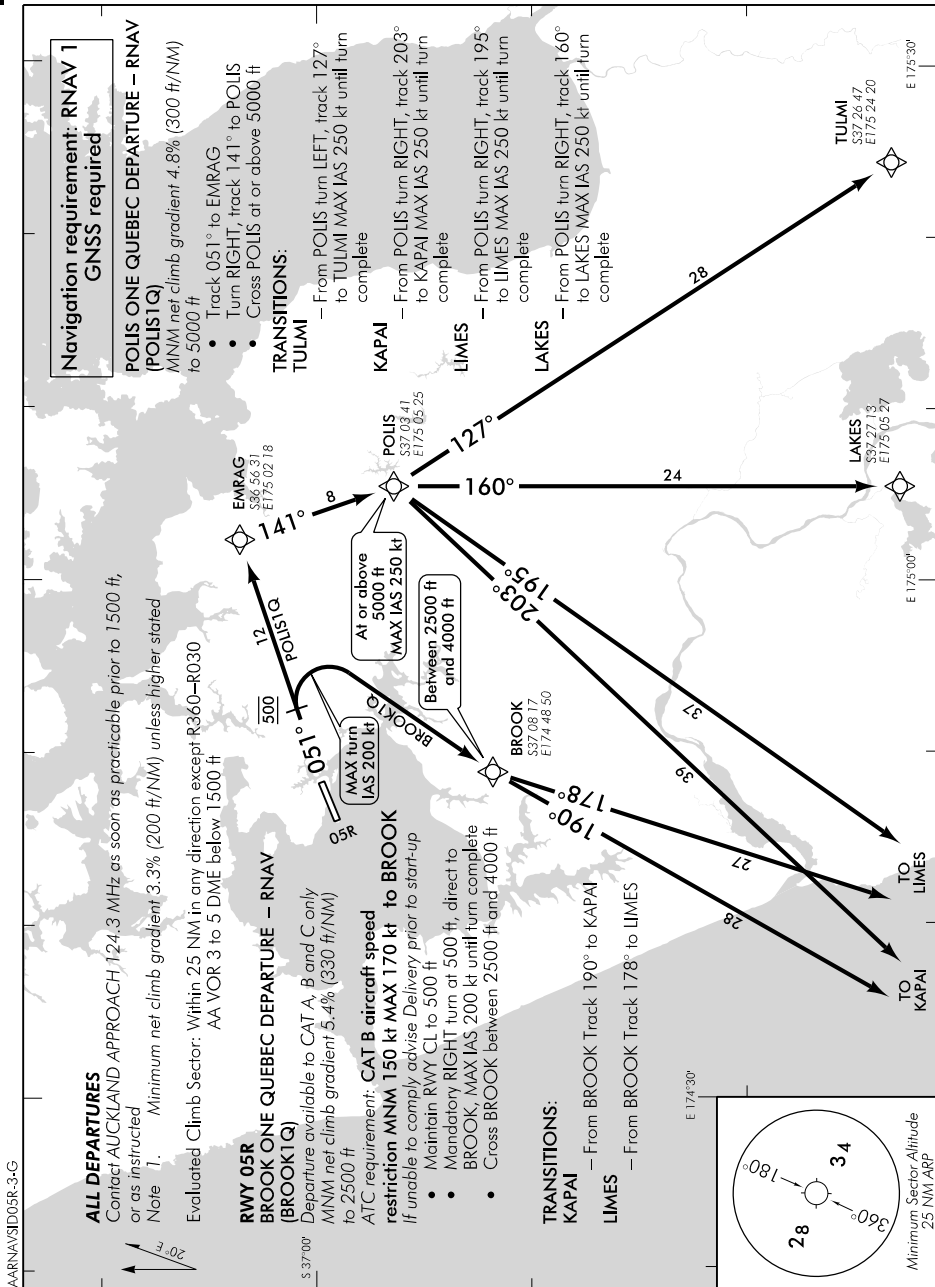
NZAA

RNAV SID RWY 05R (3)

AUCKLAND APPROACH: 124.3 129.6

TOWER: 118.7 120.95

ATIS: 127.8 127.0



Changes from 31 MAR 16: ATC call sign amended, TOWER secondary FREQ.

Effective: 9 NOV 17

© Civil Aviation Authority

AUCKLAND
RNAV SID RWY 05R (3)

ELEV 23

CAT A,B,C

AUCKLAND

NZAA

RNAV SID RWY 05R (4)

AUCKLAND APPROACH: 124.3 129.6

TOWER: 118.7 120.95

ATIS: 127.8 127.0

Navigation requirement: RNAV 1
GNSS required

ALL DEPARTURES

Contact AUCKLAND APPROACH 124.3 MHz as soon as practicable prior to 1500 ft, or as instructed

- Note 1. Minimum net climb gradient 3.3% (200 ft/NM) unless higher stated
- Note 2. ATC requirement: **CAT B and C aircraft speed restriction MNM 150 kt to REKIS.** If unable to comply advise Delivery prior to start-up

Evaluated Climb Sector: Within 25NM in any direction except R360-R030
AA VOR 3 to 5 DME below 1500 ft

RWY 05R

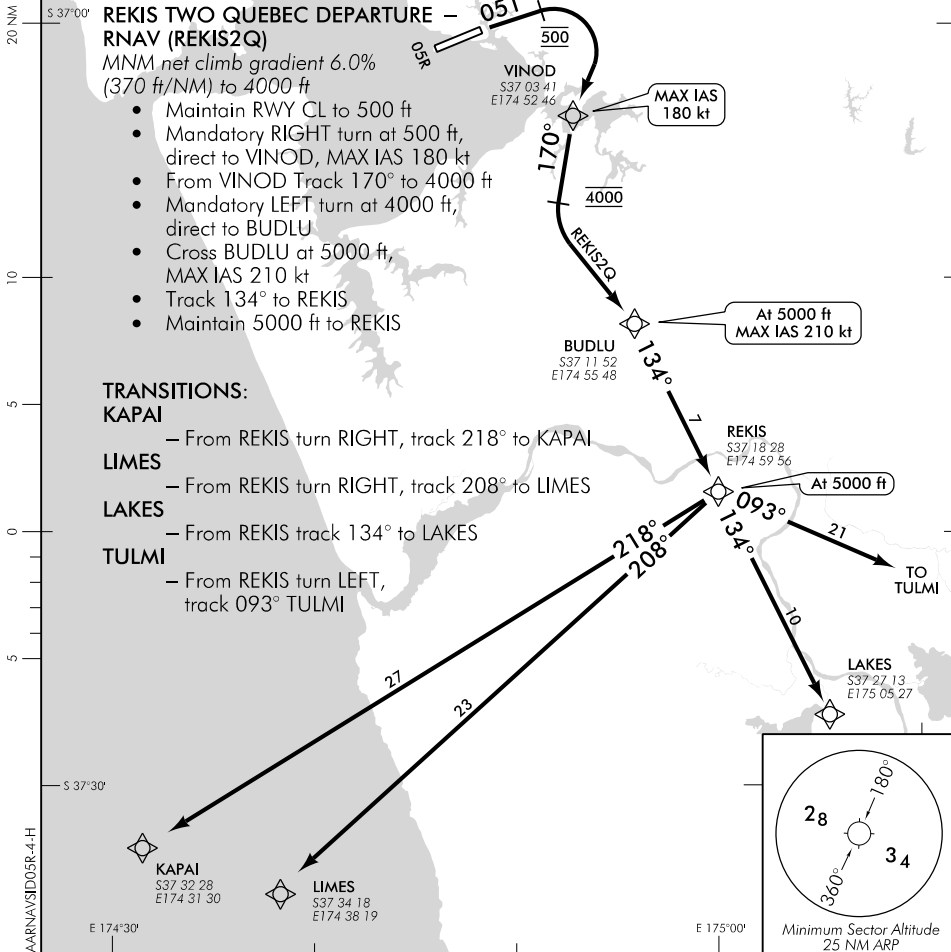
REKIS TWO QUEBEC DEPARTURE - RNAV (REKIS2Q)

MNM net climb gradient 6.0% (370 ft/NM) to 4000 ft

- Maintain RWY CL to 500 ft
- Mandatory RIGHT turn at 500 ft, direct to VINOD, MAX IAS 180 kt
- From VINOD Track 170° to 4000 ft
- Mandatory LEFT turn at 4000 ft, direct to BUDLU
- Cross BUDLU at 5000 ft, MAX IAS 210 kt
- Track 134° to REKIS
- Maintain 5000 ft to REKIS

TRANSITIONS:

- KAPAI** - From REKIS turn RIGHT, track 218° to KAPAI
- LIMES** - From REKIS turn RIGHT, track 208° to LIMES
- LAKES** - From REKIS track 134° to LAKES
- TULMI** - From REKIS turn LEFT, track 093° TULMI



Changes from 31 MAR 16: ATC call sign amended, TOWER secondary FREQ.