

ELEV 23

CAT A,B,C,D

AUCKLAND

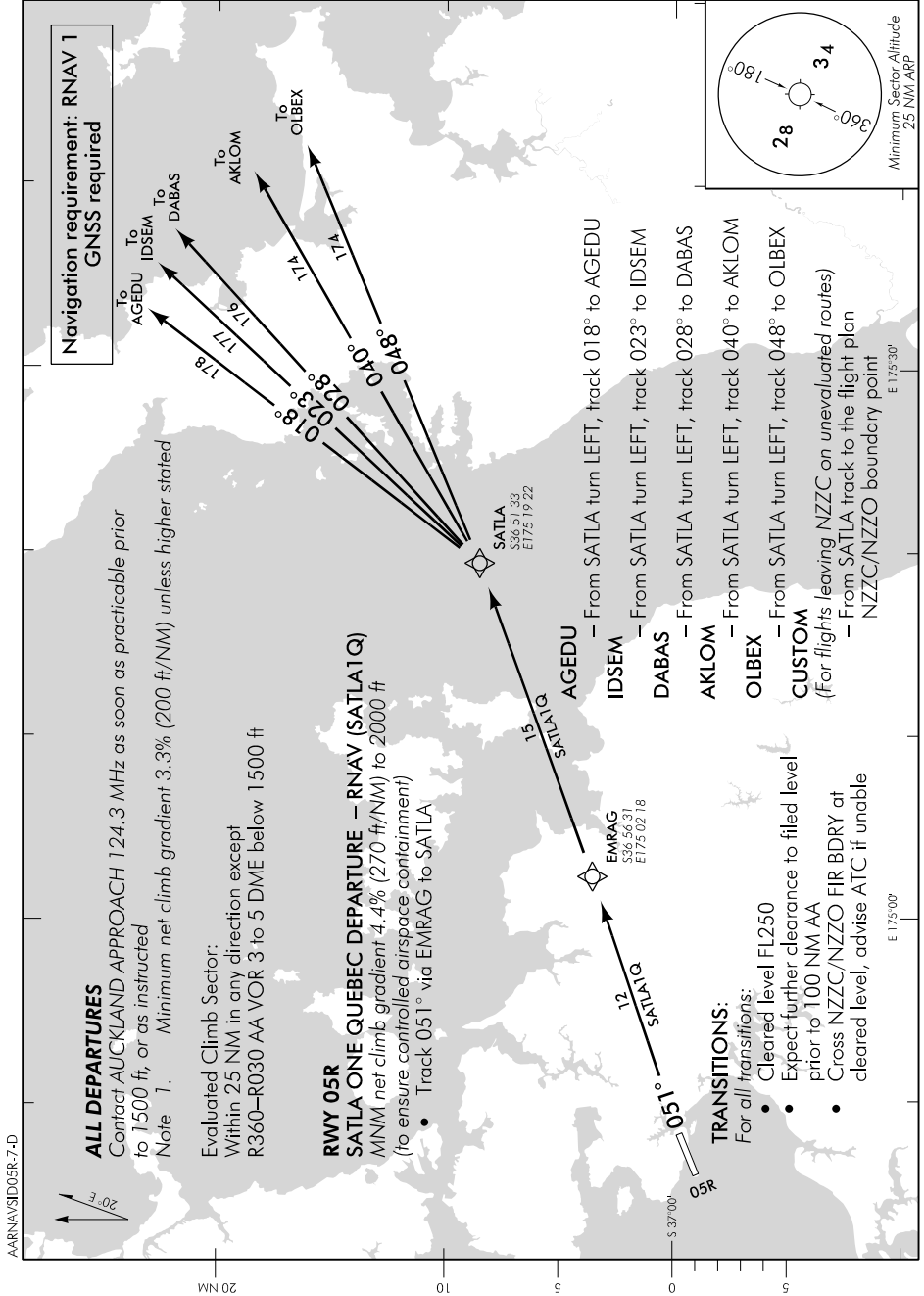
NZAA

RNAV SID RWY 05R (7)

AUCKLAND APPROACH: 124.3 129.6

TOWER: 118.7 120.95

ATIS: 127.8 127.0



Effective: 9 NOV 17

Changes from 31 MAR 16 - ATC call sign amended, TOWER secondary FREQ.

ELEV 23

CAT A,B,C,D

NZAA

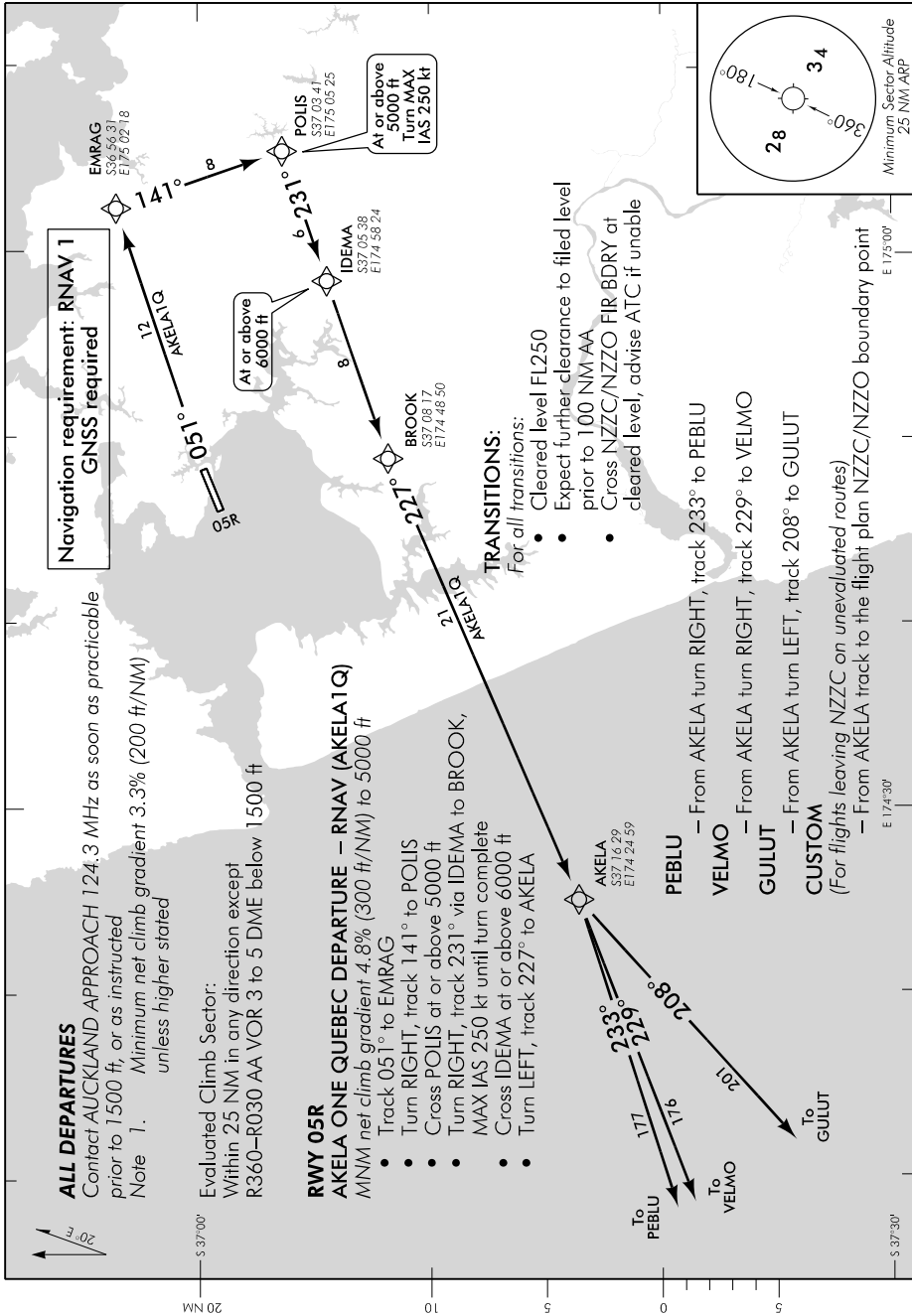
AUCKLAND RNAV SID RWY 05R (8)

AUCKLAND APPROACH: 124.3 129.6

TOWER: 118.7 120.95

ATIS: 127.8 127.0

AARNV/SID05R-8-E



**Navigation requirement: RNAV 1
GNSS required**

ALL DEPARTURES
Contact AUCKLAND APPROACH 124.3 MHz as soon as practicable prior to 1500 ft, or as instructed
Note 1. Minimum net climb gradient 3.3% (200 ft/NM) unless higher stated

Evaluated Climb Sector:
Within 25 NM in any direction except R360-R030 AA VOR 3 to 5 DME below 1500 ft

- RWY 05R**
AKELA ONE QUEBEC DEPARTURE - RNAV (AKELA1Q)
MNM net climb gradient 4.8% (300 ft/NM) to 5000 ft
- Track 051° to EMRAG
 - Turn RIGHT, track 141° to POLIS
 - Cross POLIS at or above 5000 ft
 - Turn RIGHT, track 231° via IDEMA to BROOK, MAX IAS 250 kt until turn complete
 - Cross IDEMA at or above 6000 ft
 - Turn LEFT, track 227° to AKELA

- TRANSITIONS:**
For all transitions:
- Cleared level FL250
 - Expect further clearance to filed level prior to 100 NM^{AA}
 - Cross NZCC/NZZO FIR BDRY at cleared level, advise ATC if unable

- PEBLU** - From AKELA turn RIGHT, track 233° to PEBLU
VELMO - From AKELA turn RIGHT, track 229° to VELMO
GULUT - From AKELA turn LEFT, track 208° to GULUT
CUSTOM
(For flights leaving NZCC on unevaluated routes)
- From AKELA track to the flight plan NZCC/NZZO boundary point

Changes from 31 MAR 16: ATC cell sign amended, TOWER secondary FREQ.

Effective: 9 NOV 17