

ELEV 23

CAT A,B,C,D

**AUCKLAND**

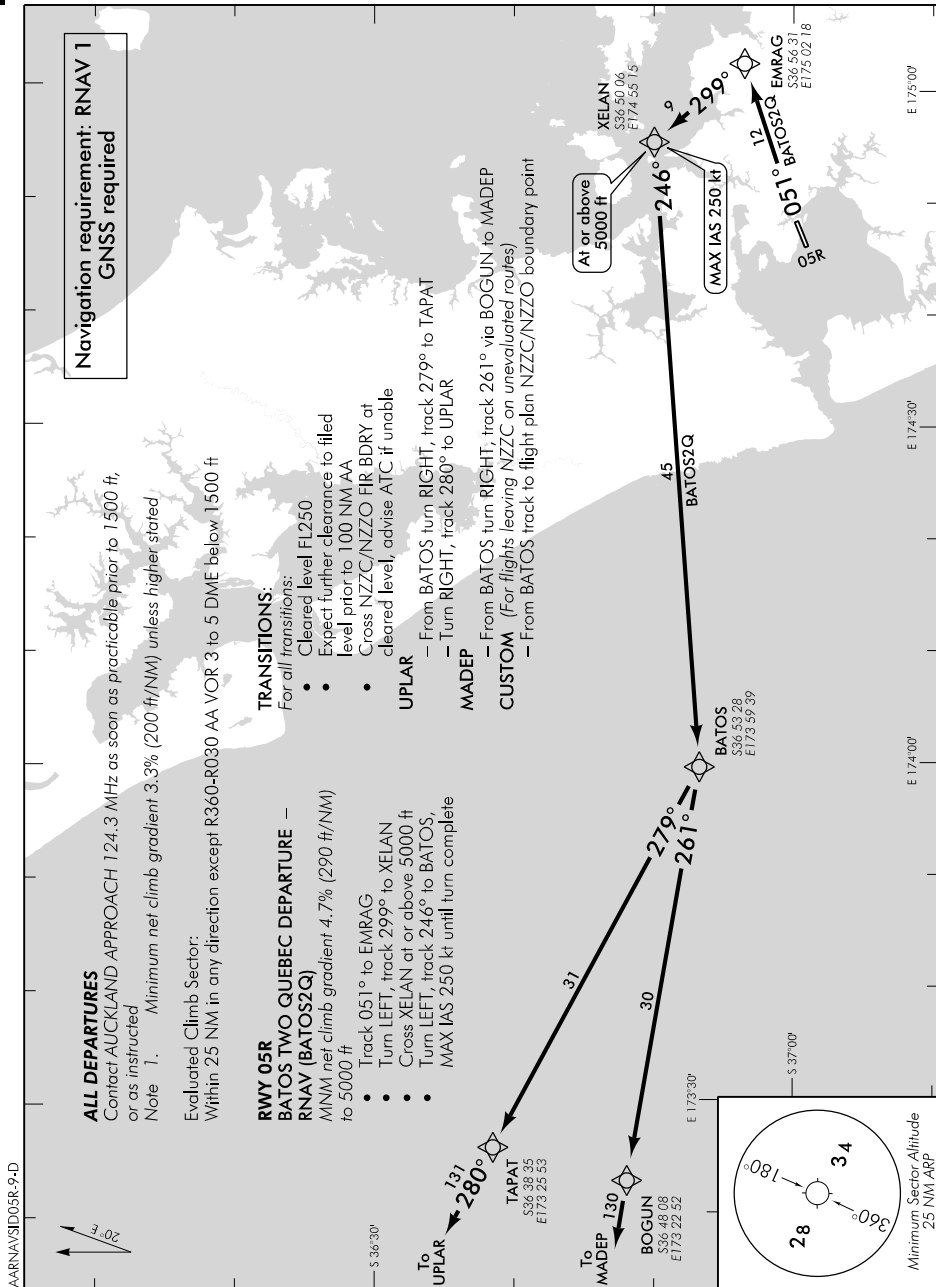
NZAA

**RNAV SID RWY 05R (9)**

AUCKLAND APPROACH: 124.3 129.6

TOWER: 118.7 120.95

ATIS: 127.8 127.0



Changes from 31 MAR 16: PAPT1 WPT replaced by UPLAR, ATC call sign amended, TOWER secondary FREQ.

**Effective: 9 NOV 17**

ELEV 23

CAT A,B,C,D

NZAA

# AUCKLAND

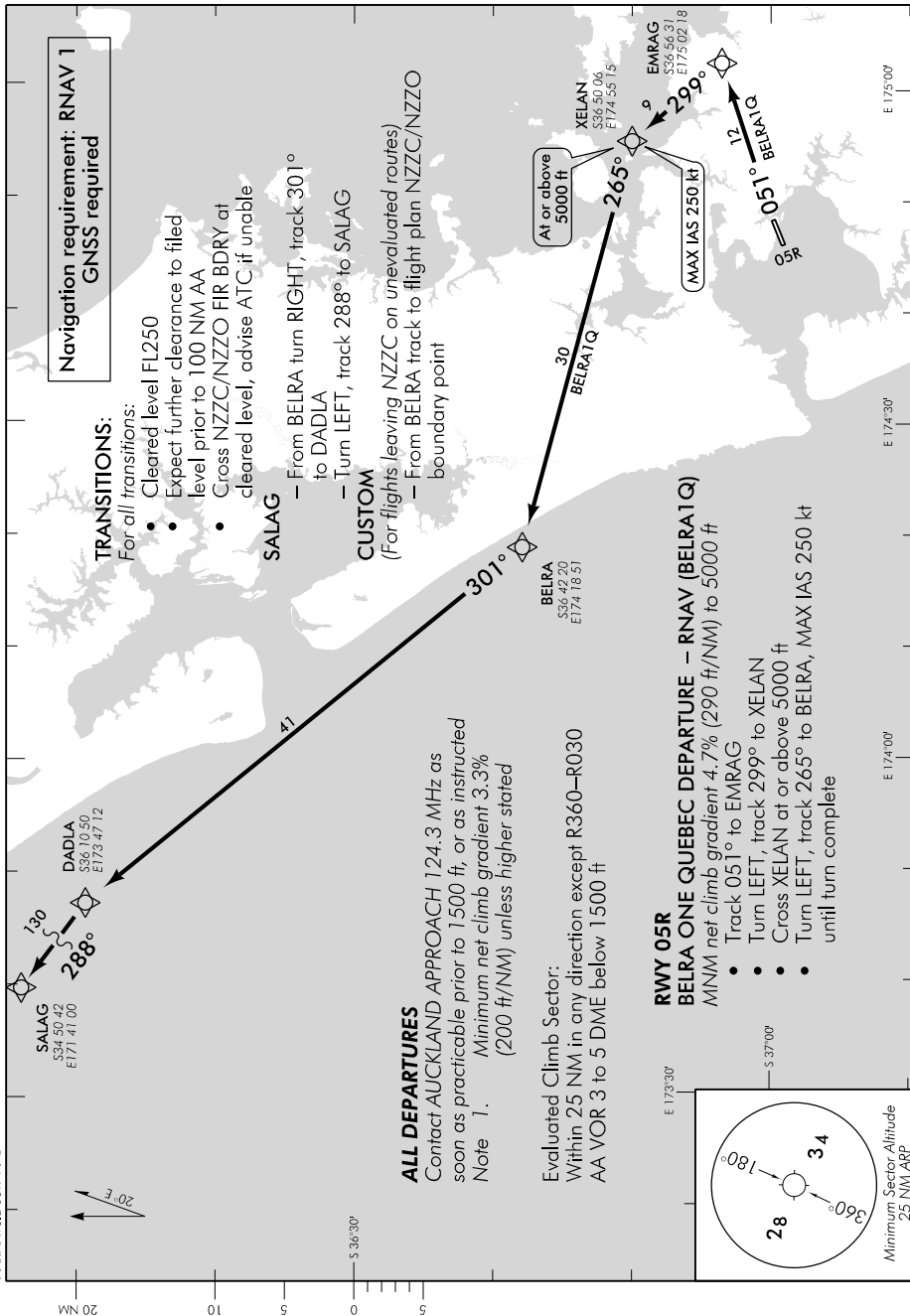
## RNAV SID RWY 05R (10)

AUCKLAND APPROACH: 124.3 129.6

TOWER: 118.7 120.95

ATIS: 127.8 127.0

AARNV/SID05R-10-D



Effective: 9 NOV 17

# AUCKLAND

## RNAV SID RWY 05R (10)