

ELEV 23

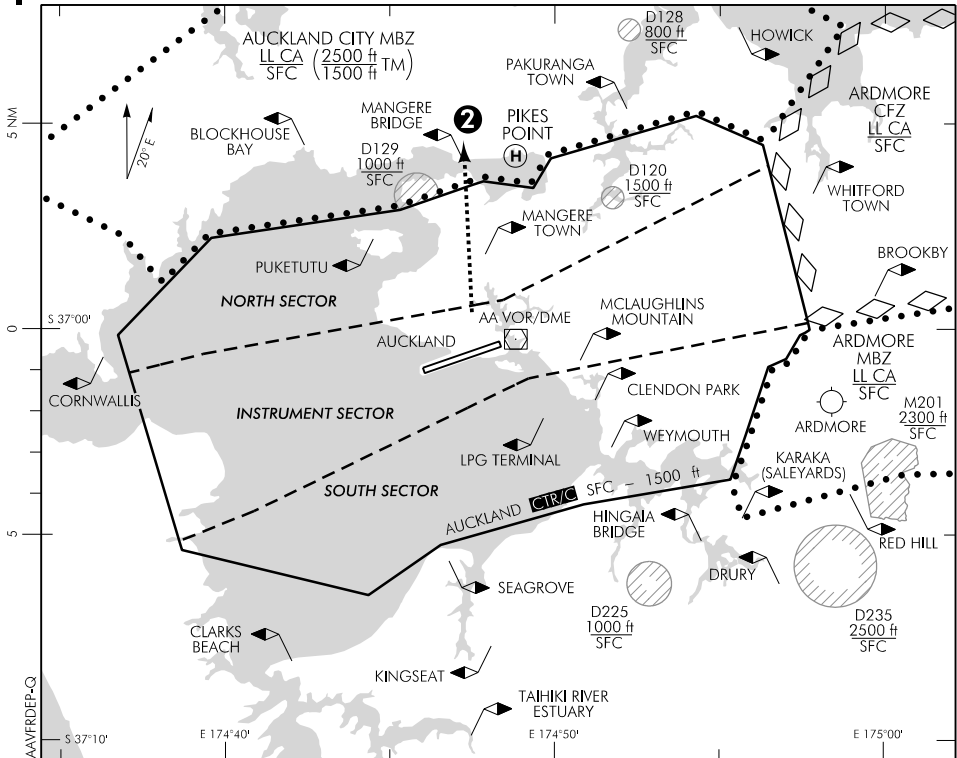
NZAA

TOWER: 118.7 120.95

AUCKLAND

VFR DEPARTURE PROCEDURES – ALL RWY

ATIS: 127.8 127.0



Changes from 30 MAR 17: TOWER secondary FREQ.

REFER ALSO VISUAL NAVIGATION CHARTS

For VFR flights departing Auckland INTL AD or Auckland Heliport and leaving the Auckland CTR/C

See Auckland VFR Arrival/Departure page for information and instructions regarding VFR Departure Procedures.

Designator

Route

- ② Mangere Bridge DEP Track direct to Mangere Bridge, 1500 ft or below.

Note: More direct plain language clearances may be issued on request, or in periods of low traffic density.

Effective: 9 NOV 17

