

ELEV 23

AUCKLAND

NZAA

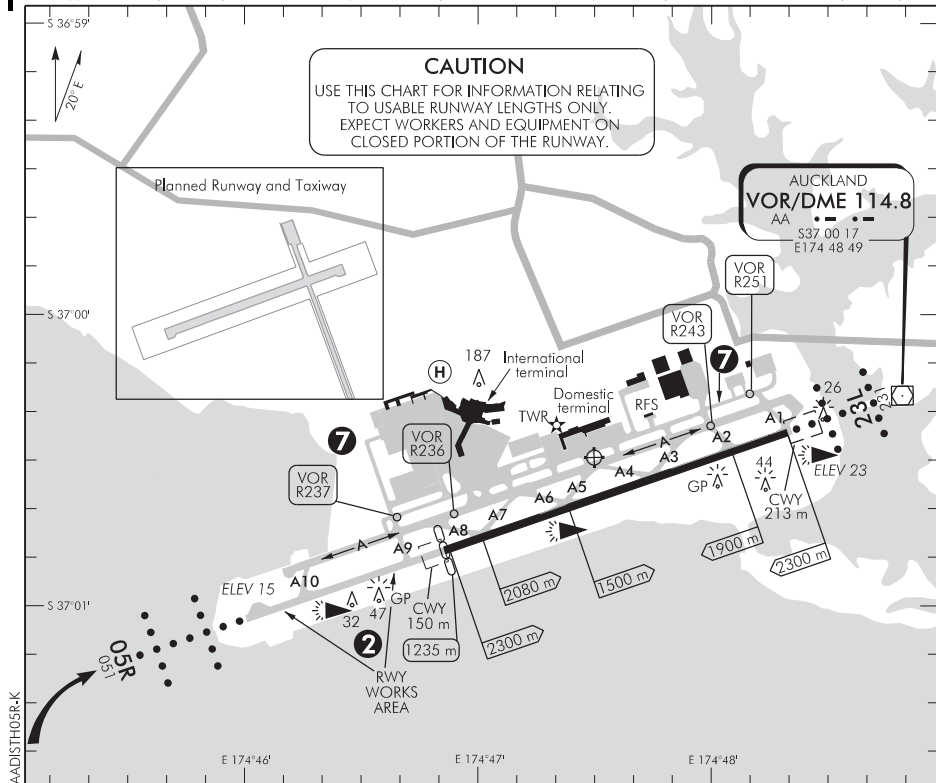
AERODROME — RWY 05R/23L — WIP WEST

TOWER: 118.7 120.95

DELIVERY: 128.2

GROUND: 121.9

ATIS: 127.8 127.0



Changes from 10 NOV 16: TOWER secondary FREQ, Pier B depiction.

1. Chart to be used during runway WIP west of TWY A9. Reduced length for take-off and landing will apply. Activation of restrictions will be by ATIS or RTF. Works will not take place when the runway is wet.

2. During runway WIP — WEST RWY 05R threshold is displaced by 1235 m.

3. Circuit: RWY 05R — Right hand
RWY 23L — Left hand

Unless otherwise instructed, ATC circuit altitudes are:

All Jets 1500 ft AMSL

All other ACFT 1000 ft AMSL

4. ATC Speed Requirements:

Arriving IFR: Unless otherwise approved or assigned by ATC, aircraft must fly an instrument approach at the promulgated speeds, with a MNM 150 kt IAS to 5 NM on final approach. If unable to comply with promulgated speeds, advise ATC with preferred speed.

VFR in circuit: approach speed of not less than 90 kt IAS when above 300 ft AMSL.

5. Full length take-off available to approved long-haul international aircraft with prior notice.

6. **CAUTION:** Full length landing not available.

7. A portion of the eastern end of TWY B and the northern end of TWY L are not visible from TWR. See Ground Movements — RWY 05R/23L — WIP WEST chart for detail.

8. **CAUTION:** Bird hazard. Refer to NZAA AD 2.23.

9. Grass areas are not available for any aircraft use. All operations are to be confined to runways, taxiways and apron areas.

10. Holding positions on TWY A1 to TWY A9 inclusive are not available during code F aircraft take-offs or landings.

S 37 00 29 E 174 47 30

© Civil Aviation Authority

Effective: 9 NOV 17

AUCKLAND**AERODROME — RWY 05R/23L — WIP WEST**

NZAA

OPERATIONAL DATA — RWY 05R/23L — WIP WEST**RWY****Runway WIP WEST — Displaced Threshold/Reduced Length Operations**

RWY		ASDA/ TORA	Take-off distance			LDG DIST
			1:40	1:50	1:62.5	
05R	Displaced threshold 1235m	2300	2513	2513	2513	2300
23L	RWY length reduced 1235m	2300	2450	2450	2450	2080 Exit TWY A8
						2300 Exit TWY A9 on request

RWY 05R Take-off: TWY A9 and closed portion of RWY 05R between TWY A9 and displaced threshold will be lit and is available for taxiing with prior notice.

RWY 23L Take-off: Critical obstacle vehicle 10 ft AGL 2635 m from start of take-off. Men and equipment will be working on closed portion of runway.

RESA RWY 05R WIP WEST — 240 x 90 m reducing to 65 m wide at the eastern end

RESA RWY 23L WIP WEST — 240 x 90 m

MINIMA

IFR Take-off		
RWY	Day	Night
05R/23L ¹	300-1500	300-1500

¹ Reduced take-off minima RWY 05R/23L not available.

LIGHTING

Runway:

05R Threshold displaced by 1235 m
PAPI 3.00°/TCH 73 on south side of runway. Displaced THR wing markers
LIH G both sides of runway
REIL; 3 sequenced strobes — daylight only
LIH ALS, LIL ALS, RCLL not available

23L LIH ALS/5 Bar W; LIL ALS/2 Bar R; PAPI 3.00°/TCH 73;
LIH TDZ, LIH Supplementary Approach Lighting siderow red
REIL; 3 sequenced strobes — daylight only LIH RWY
RCLL not available

Aerodrome: ABN ALTN FLG GW 3.75 SEC, HBN, WDI

Taxiway: CL, HLDG PSN, clearance & stop-bars
TWY A9 has ALTN G/Y CL

Apron: Taxiway edge and floodlighting

Standby power available.

FACILITIES

Fuel: Air BP Jet A1, Avgas 100 by truck, Carnet into plane, BP/Z Energy JIFS
133.9 MHz (09) 256 6480 option 0 or 021 767 706
Exxon Mobil/Chevron Jet A1, Carnet into plane, Exxon Mobil, 133.0 MHz
(09) 275 6133
Z Energy Jet A1, Avgas 100 by truck, Carnet into plane,
BP/Z Energy JIFS 133.9 MHz (09) 256 6480 option 0 or 021 767 706

Light aircraft wash facility. Located on TWY C1.

Refer to NZAA AD 2 section for detailed aerodrome description.

SUPPLEMENTARY

Operator: Auckland International Airport Limited, PO Box 73020,
Auckland International Airport, 2150
Tel (09) 275 0789 Fax (09) 256 8859

Designated security aerodrome.