

ELEV 23

CAT A,B,C,D

AUCKLAND

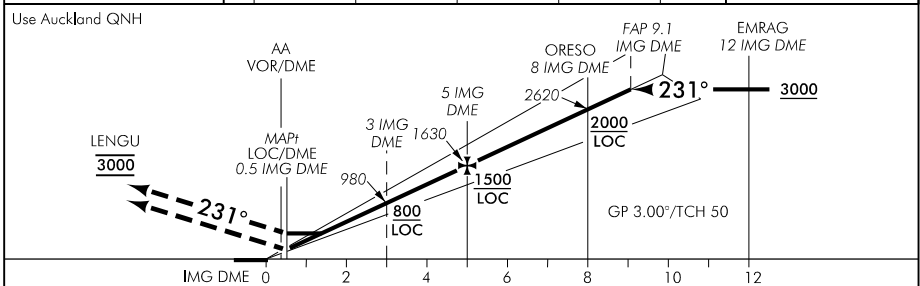
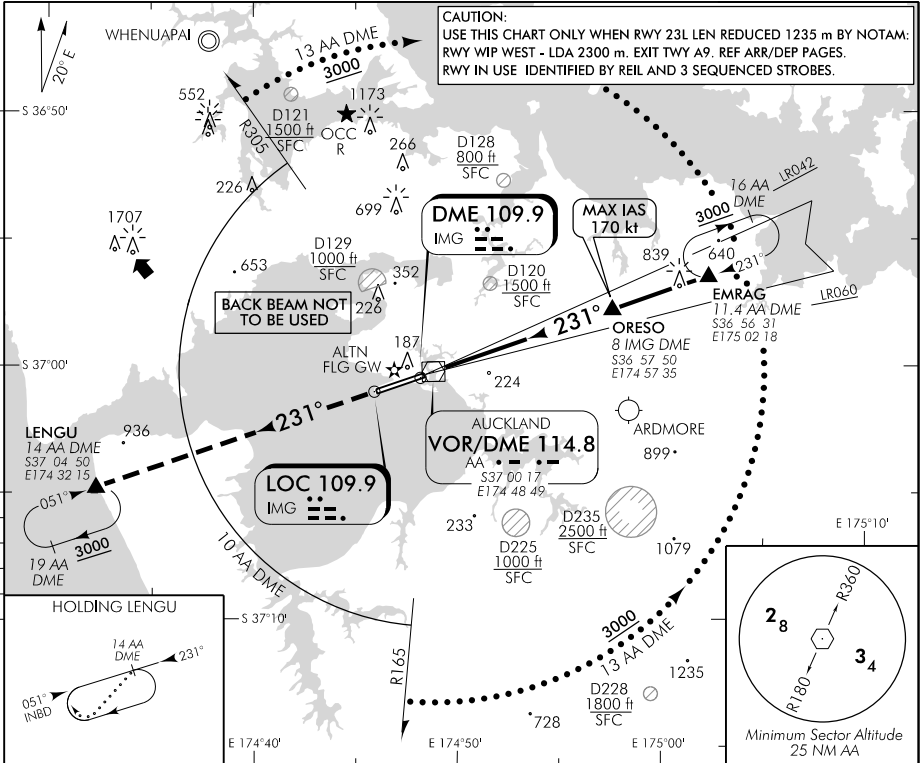
RWY 23L THR ELEV 23

ILS/DME W or LOC/DME W RWY 23L

AUCKLAND APPROACH: 124.3 129.6

ATIS: 127.8 127.0

TOWER: 118.7 120.95



MISSED APCH: MAX IAS 185 kt. Track 231° to LENGU 3000

IMG DME DIST	MAP 0.5	1.3	2	3	4	5	6	7	8	9	10
Advisory Altitude 3°	DA/MDA	MDA	660	980	1310	1630	1960	2290	2620	2960	3290
Category	A		B			C			D/D _L		
ILS/DME (CAT I)	223(200) – 800 or RVR 550										
ILS/DME LH ALS U/S	273(250) – 1200 or RVR 800										
LOC/DME	450(427) – 1500										
Circling	560(537) – 1900		560(537) – 2800			*760(737) – 3700			*920(897) – 4600		

* Circling CAT C and D NA north of RWY

Effective: 9 NOV 17

Changes from 14 SEP 17: ATC coll sign amended, TOWER secondary FREQ., D128 and D228 added.

ELEV 23

CAT A,B,C,D

RWY 05R THR ELEV 15

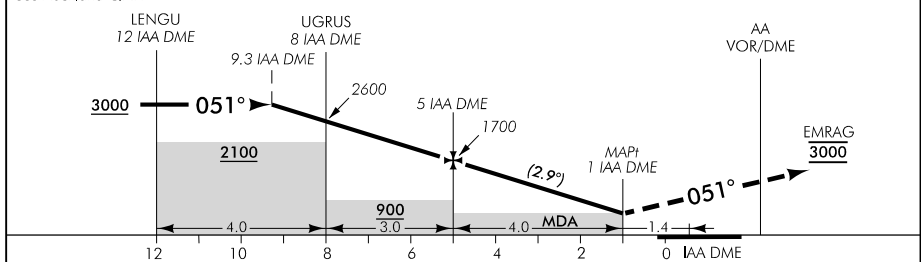
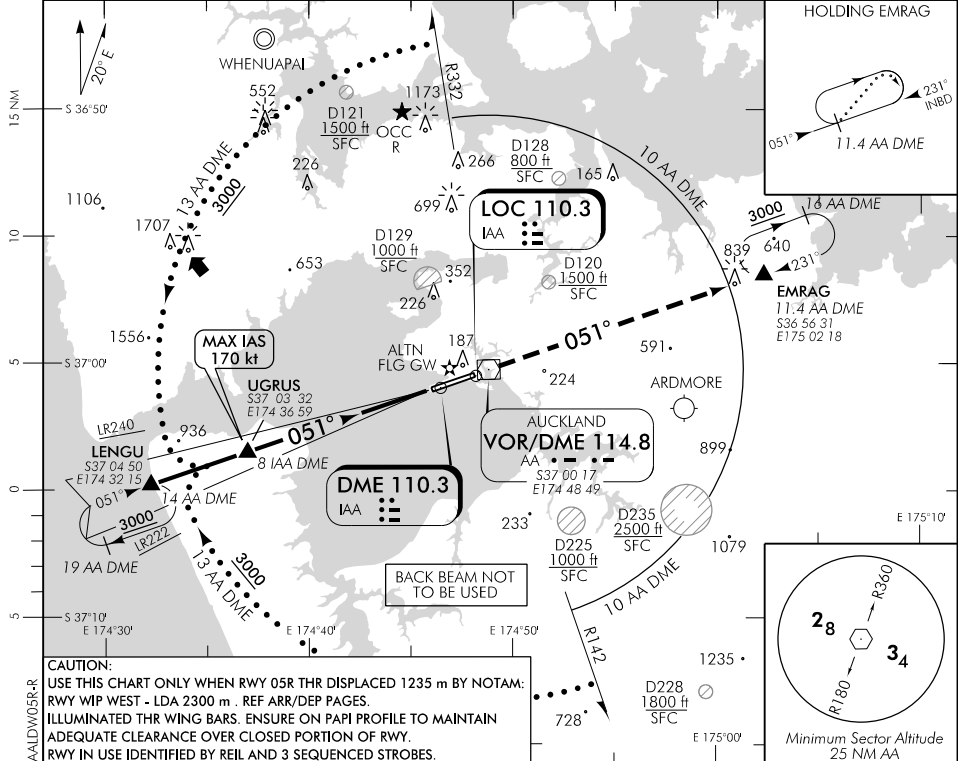
AUCKLAND

LOC/DME W RWY 05R

AUCKLAND APPROACH: 124.3 129.6

ATIS: 127.8 127.0

TOWER: 118.7 120.95



IAA DME DIST	10	9	8	7	6	5	4	3	2	1.1	MAPt 1
Advisory Altitude 5%	3200	2900	2600	2300	2000	1700	1400	1100	800	MDA	MDA
Category	A		B			C			D		
LOC/DME	520(505) - 3000										
Circling	560(537) - 1900		560(537) - 2800			*760(737) - 3700			*920(897) - 4600		

* Circling CAT C and D NA north of RWY

Changes from 9 NOV 17: DME arc limiting radials updated.

YELLOW YELLOW YELLOW YELLOW YELLOW YELLOW YELLOW YELLOW YELLOW YELLOW

Effective: 1 FEB 18