

ELEV 23

CAT A,B,C,D

AUCKLAND

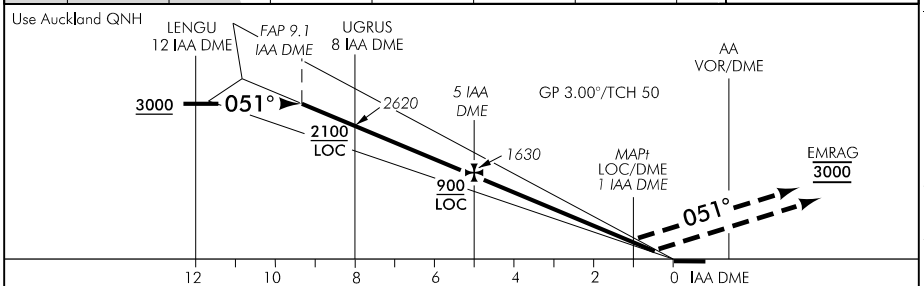
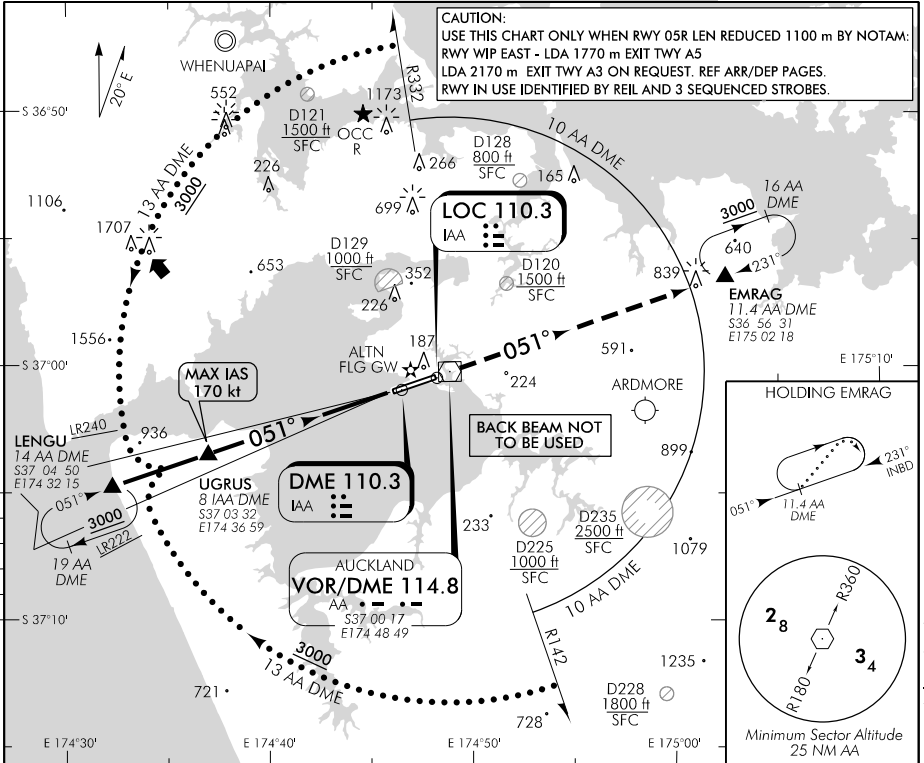
RWY 05R THR ELEV 15

ILS/DME E or LOC/DME E RWY 05R

AUCKLAND APPROACH: 124.3 129.6

ATIS: 127.8 127.0

TOWER: 118.7 120.95



MISSED APCH: MAX IAS 185 kt. Track 051° to EMRAG 3000

IAA DME DIST	10	9	8	7	6	5	4	3	2	1.1	MAP1	0.4
Advisory Altitude 3°	3280	2950	2620	2280	1950	1630	1300	980	650	MDA	MDA	DA
Category	A		B			C			D/D _L			
ILS/DME (CAT I)	215(200) – 800 or RVR 550											
ILS/DME LH ALS U/S	265(250) – 1200 or RVR 800											
LOC/DME	350(335) – 1500											
Circling	560(537) – 1900		560(537) – 2800			*760(737) – 3700			*920(897) – 4600			

* Circling CAT C and D NA north of RWY

Effective: 1 FEB 18

Changes from 9 NOV 17: DME arc limiting radials updated.

ELEV 23

CAT A,B,C,D

AUCKLAND

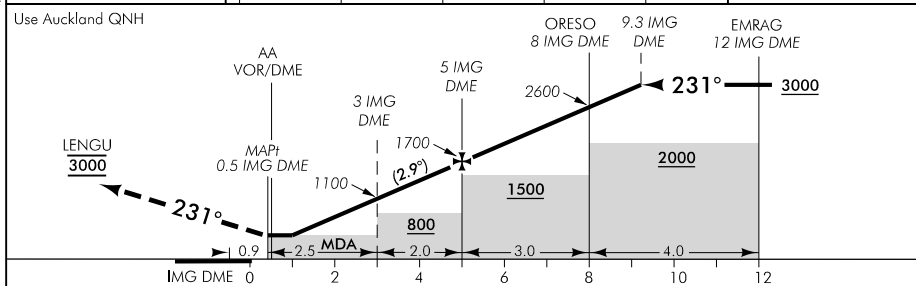
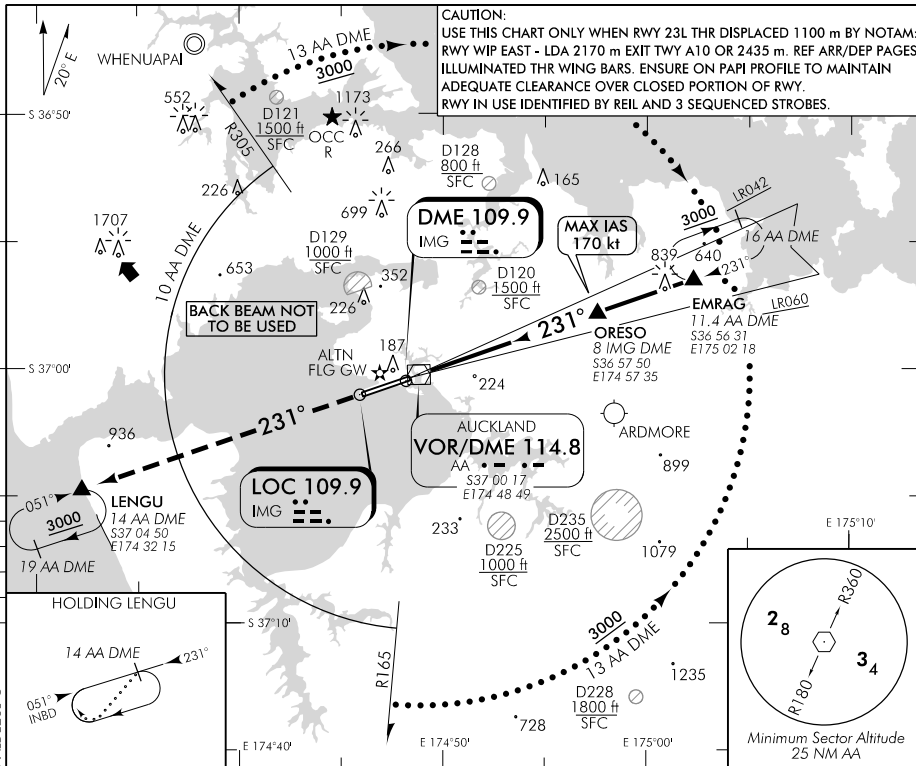
RWY 23L THR ELEV 23

LOC/DME E RWY 23L

AUCKLAND APPROACH: 124.3 129.6

ATIS: 127.8 127.0

TOWER: 118.7 120.95



MISSED APCH: MAX IAS 185 kt. Track 231° to LENGU 3000

IMG DME DIST	MAPt 0.5 IMG	1.1	2	3	4	5	6	7	8	9	10
Advisory Altitude 5%	MDA	MDA	800	1100	1400	1700	2000	2300	2600	2900	3200
Category	A		B			C			D		
LOC/DME	530(507) - 3000										
Circling	560(537) - 3000					*760(737) - 3700			*920(897) - 4600		

* Circling CAT C and D NA north of RWY

Changes from 10 NOV 16: ATC call sign amended, TOWER secondary FREQ, D128 and D228 added.

YELLOW YELLOW YELLOW YELLOW YELLOW YELLOW YELLOW YELLOW YELLOW YELLOW

Effective: 9 NOV 17