

ELEV 23

CAT A,B,C,D

AUCKLAND

RWY 05R THR ELEV 15

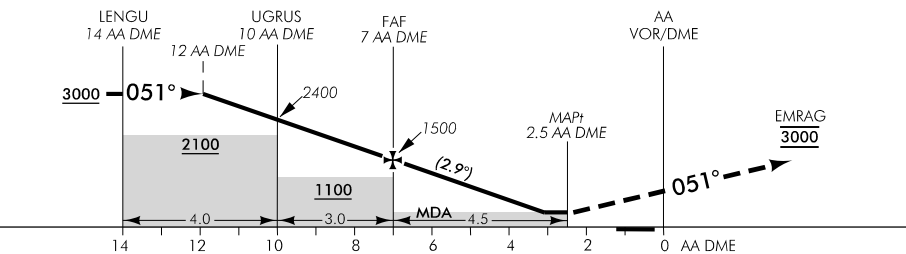
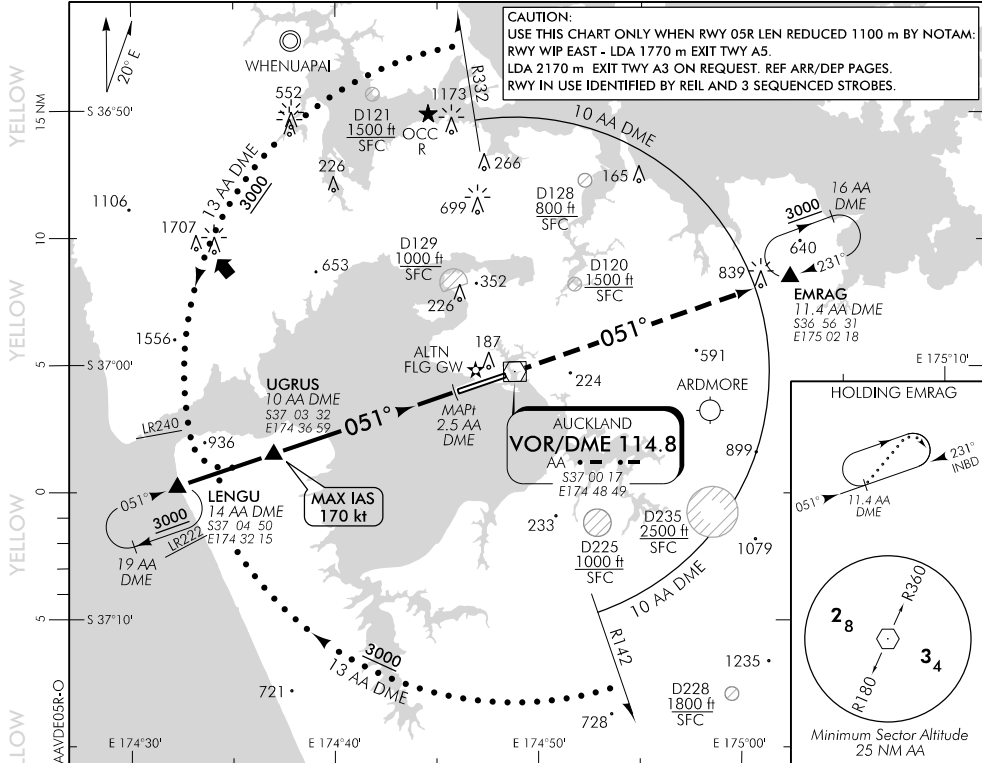
VOR/DME E RWY 05R

AUCKLAND APPROACH: 124.3 129.6

ATIS: 127.8 127.0

TOWER: 118.7 120.95

CAUTION:
 USE THIS CHART ONLY WHEN RWY 05R LEN REDUCED 1100 m BY NOTAM:
 RWY WIP EAST - LDA 1770 m EXIT TWY A5.
 LDA 2170 m EXIT TWY A3 ON REQUEST. REF ARR/DEP PAGES.
 RWY IN USE IDENTIFIED BY REIL AND 3 SEQUENCED STROBES.



AA DME DIST	10	9	8	7	6	5	4	3.1	MAPt 2.5
Advisory Altitude 5%	2400	2100	1800	1500	1200	900	600	MDA	MDA
Category	A		B			C		D	
VOR/DME	350(335) - 1500								
Circling	560(537) - 1900		560(537) - 2800			*760(737) - 3700		*920(897) - 4600	

* Circling CAT C and D NA north of RWY

Effective: 1 FEB 18

Changes from 9 NOV 17: DME arc lead radials updated.

ELEV 23

CAT A,B,C,D

RWY 23L THR ELEV 23

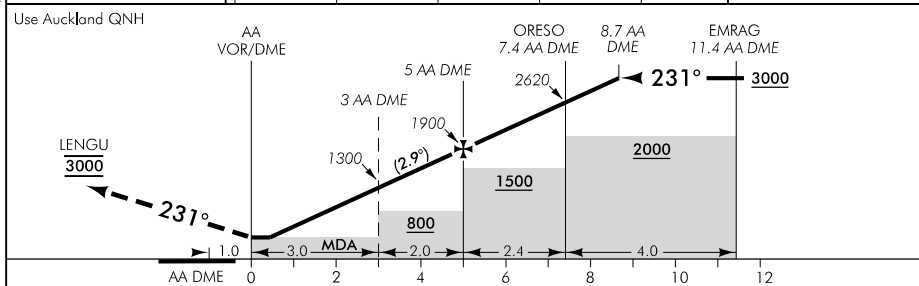
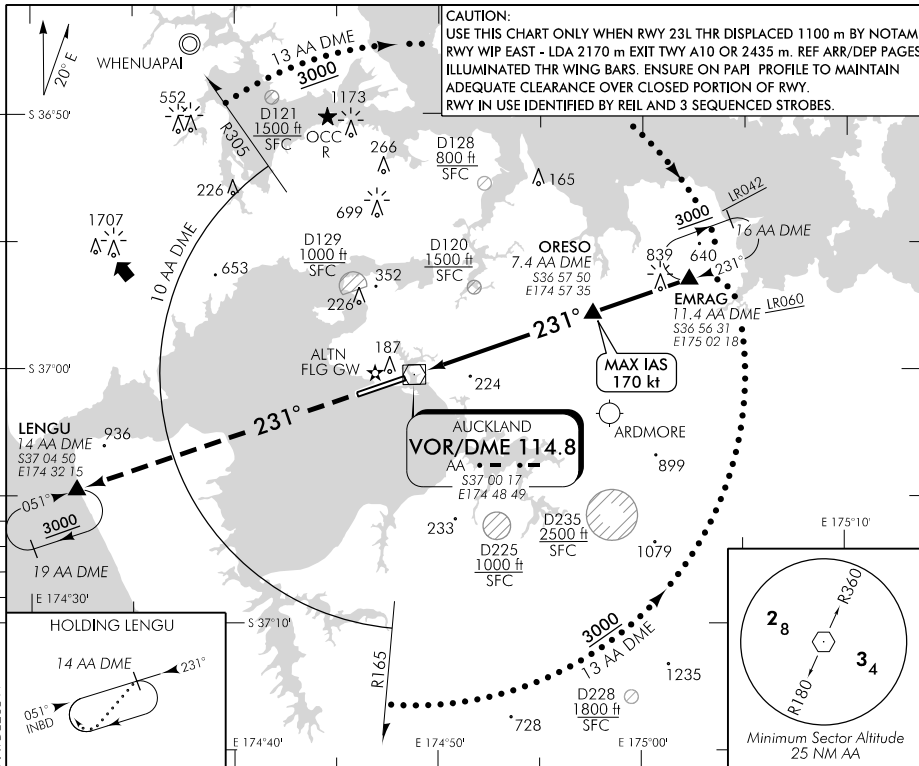
AUCKLAND

VOR/DME E RWY 23L

AUCKLAND APPROACH: 124.3 129.6

ATIS: 127.8 127.0

TOWER: 118.7 120.95



AA DME DIST	MAPt VOR	0.5	1	2	3	4	5	6	7	8	9	10
Advisory Altitude 5%	MDA	MDA	700	1000	1300	1600	1900	2200	2500	2800	3100	3400
Category		A			B			C			D	
VOR/DME		530(507) - 3000										
Circling		560(537) - 3000					*760(737) - 3700			*920(897) - 4600		

* Circling CAT C and D NA north of RWY

Effective: 9 NOV 17