

ELEV 23

CAT A,B,C,D

AUCKLAND

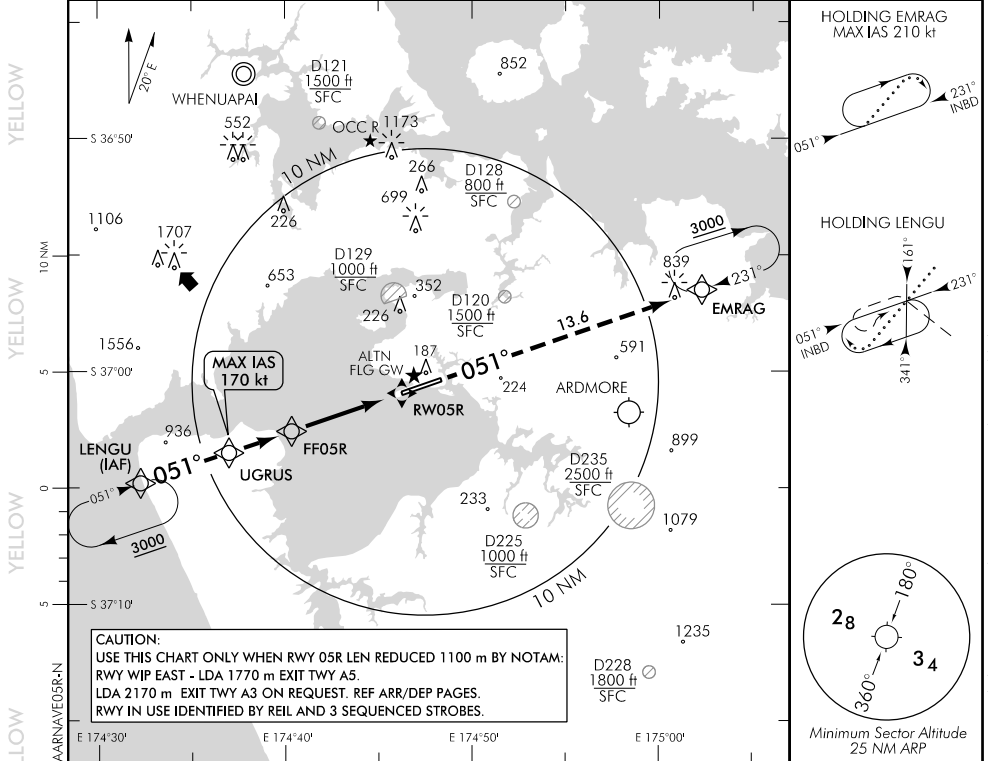
RWY 05R THR ELEV 15

RNAV (GNSS) E RWY 05R

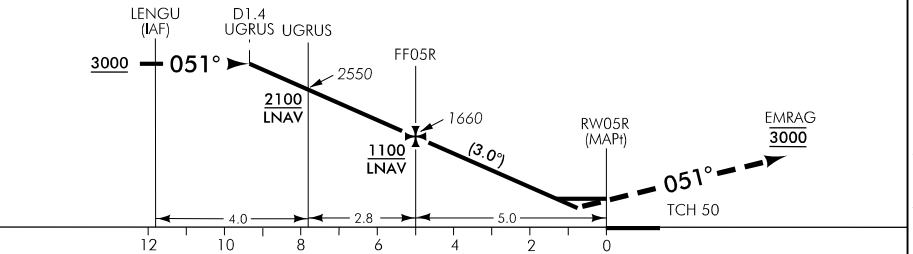
AUCKLAND APPROACH: 124.3 129.6

ATIS: 127.8 127.0

TOWER: 118.7 120.95



Use Auckland QNH



MISSED APCH: MAX IAS 185 kt. Climb on 051° to EMRAG 3000

| | | | | | | | | | | |
|----------------------|-----------------|------|-----------------|-------|------|------------------|-----|------------------|-----|-------|
| DISTANCE to WPT | UGRUS | 2 | 1 | FF05R | 4 | 3 | 2 | 1 | 0.9 | RW05R |
| Advisory Altitude 3° | 2550 | 2300 | 1980 | 1660 | 1340 | 1020 | 700 | MDA | DA | MDA |
| Category | A | | | B | | C | | D | | |
| LNAV/VNAV * | 270(255) - 1500 | | | | | 330(315) - 1500 | | | | |
| LNAV | 380(365) - 1500 | | | | | | | | | |
| Circling | 560(537) - 1900 | | 560(537) - 2800 | | | #760(737) - 3700 | | #920(897) - 4600 | | |

* Valid to AD temperature -5°C. Use of remote QNH NA.
Circling CAT C and D NA north of RWY

Effective: 9 NOV 17

Changes from 10 NOV 16: ATIS call sign amended, TOWER secondary FREQ, D128 and D228 added.

