

ELEV 23

AUCKLAND

NZAA

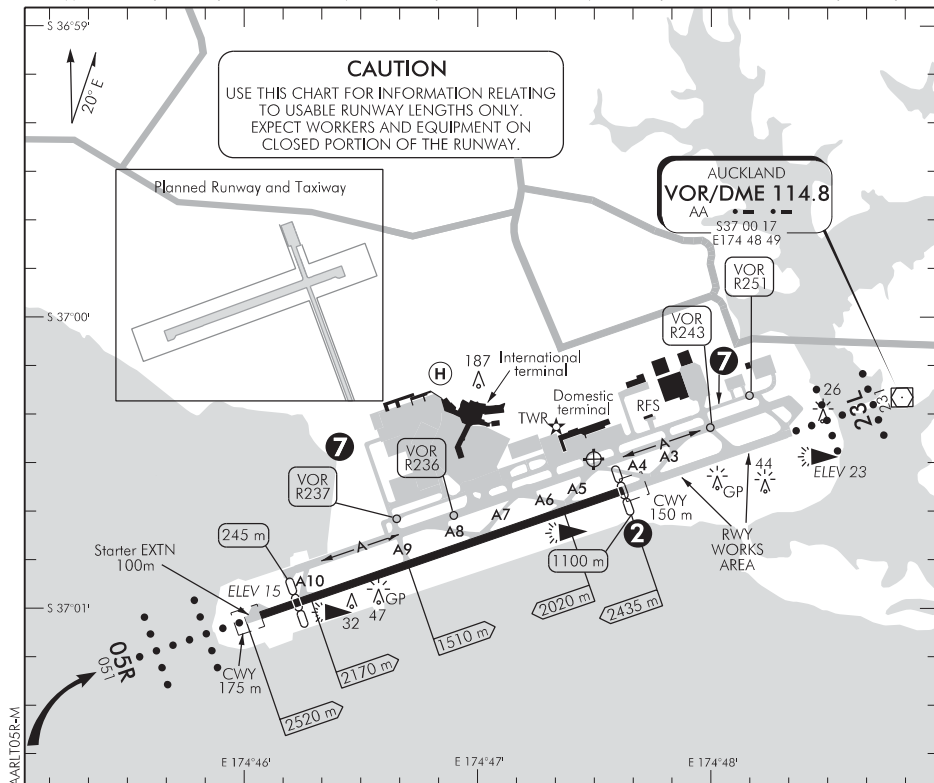
AERODROME — RWY 05R/23L — WIP EAST

TOWER: 118.7 120.95

DELIVERY: 128.2

GROUND: 121.9

ATIS: 127.8 127.0



1. Chart to be used during runway WIP east of TWY A3. Reduced length for take-off and landing will apply. Activation of restrictions will be by ATIS or RTF. Works will not take place when the runway is wet.

2. During runway WIP — EAST RWY 23L threshold is displaced by 1100 m.

3. Circuit: RWY 05R — Right hand
RWY 23L — Left hand

Unless otherwise instructed, ATC circuit altitudes are:

All Jets 1500 ft AMSL
All other ACFT 1000 ft AMSL

4. ATC Speed Requirements:

Arriving IFR: Unless otherwise approved or assigned by ATC, aircraft must fly an instrument approach at the promulgated speeds, with a MNM 150 kt IAS at 5 NM on final approach. If unable to comply with promulgated speeds, advise ATC with preferred speed.

VFR in circuit: approach speed of not less than 90 kt IAS when above 300 ft AMSL.

5. Full length take-off available to approved long-haul international aircraft with prior notice.

6. **CAUTION:** Full length landing not available.

7. A portion of the eastern end of TWY B and the northern end of TWY L are not visible from TWR. See Ground Movements — RWY 05R/23L — WIP EAST chart for detail.

8. **CAUTION:** Bird hazard. Refer to NZAA AD 2.23.

9. Grass areas are not available for any aircraft use. All operations are to be confined to runways, taxiways and apron areas.

10. Holding positions on TWY A1 to A8 inclusive are not available during code F aircraft take-offs or landings.

S 37 00 29 E 174 47 30

© Civil Aviation Authority

Effective: 29 MAR 18**AUCKLAND****AERODROME — RWY 05R/23L — WIP EAST**

NZAA

OPERATIONAL DATA — RWY 05R/23L — WIP EAST**RWY****Runway WIP EAST — Displaced Threshold/Reduced Length Operations**

RWY		Take-off Information	ASDA/TORA	Take-off distance			LDG DIST
				1:40	1:50	1:62.5	
05R	RWY length reduced 1100 m	From TWY A10	2170	2320	2320	2320	1770 Exit TWY A5
		From Western Extension (Includes 100 m Starter EXTN)	2520	2670	2670	2670	2170 Exit TWY A3 on request
23L	Displaced threshold 1100 m	From TWY A5	2020	2195	2195	2195	2170 Exit TWY A10
			2435	2610	2610	2610	2435

RWY 05R Take-off: Critical obstacle vehicle 10 ft AGL 2510 m from start of take-off TWY A10.

Men and equipment will be working on closed portion of runway.

RWY 23L Take-off: TWY A3 and closed portion of RWY 23L between TWY A3 and displaced threshold will be lit and is available for taxiing with prior notice.

RESA RWY 05R WIP EAST — 240 x 90 m

RESA RWY 23L WIP EAST — 240 x 90 m

MINIMA

IFR Take-off		
RWY	Day	Night
05R/23L ¹	300–1500	300–1500

¹ Reduced take-off minima RWY 05R/23L not available.**LIGHTING**

Runway:

05R LIH ALS 5 Bar W; LIL ALS/2 BAR R; PAPI 3.00°/TCH 73;

RCLL not available;

REIL; 3 sequenced strobes — daylight only

LIH RWY

23L

Threshold displaced 1100m

PAPI 3.00°/TCH 73 on south side of runway. Displaced THR marked by illuminated high intensity green wing markers both sides of runway.

LIH ALS, LIL ALS and RCLL not available.

REIL; 3 sequenced strobes — daylight only.

Aerodrome:

ABN ALTN FLG GW 3.75 SEC, HBN, WDI

Taxiway:

CL, HLDG PSN, clearance & stop-bars

TWY A9 and A10 have ALTN G/Y CL

Apron:

Taxiway edge and floodlighting

Standby power available.

FACILITIES

Fuel:

Air BP Jet A1, Avgas 100 by truck, Carnet into plane, BP/Z Energy JIFS

133.9 MHz (09) 256 6480 option 0 or 021 767 706

Exxon Mobil/Chevron Jet A1, Carnet into plane, Exxon Mobil, 133.0 MHz

(09) 275 6133

Z Energy Jet A1, Avgas 100 by truck, Carnet into plane,

BP/Z Energy JIFS 133.9 MHz (09) 256 6480 option 0 or 021 767 706

Light aircraft wash facility. Located on TWY C1.

Refer to NZAA AD 2 section for detailed aerodrome description.

SUPPLEMENTARY

Operator:

Auckland International Airport Limited, PO Box 73020,

Auckland International Airport, 2150

Tel (09) 275 0789 Fax (09) 256 8859

Designated security aerodrome.