

ELEV 23

CAT A,B,C,D

AUCKLAND

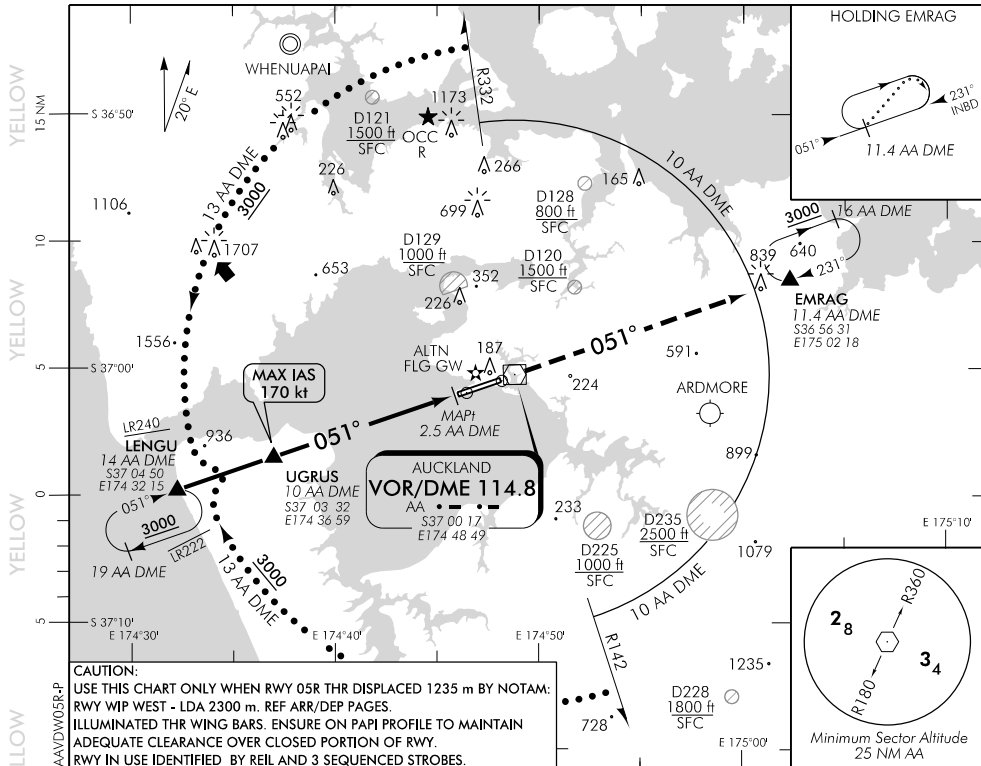
RWY 05R THR ELEV 15

VOR/DME W RWY 05R

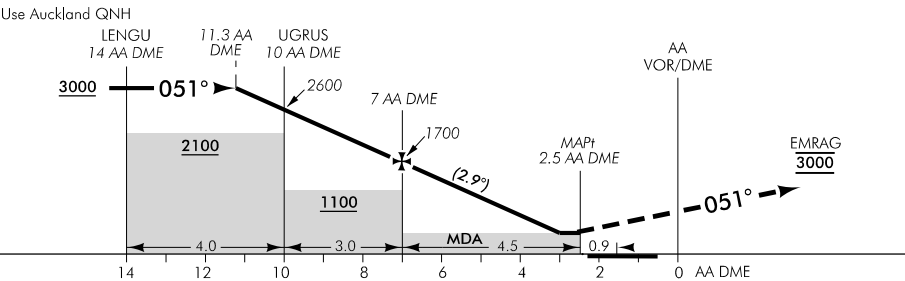
AUCKLAND APPROACH: 124.3 129.6

ATIS: 127.8 127.0

TOWER: 118.7 120.95



CAUTION:
 USE THIS CHART ONLY WHEN RWY 05R THR DISPLACED 1235 m BY NOTAM:
 RWY WIP WEST - LDA 2300 m. REF ARR/DEP PAGES.
 ILLUMINATED THR WING BARS. ENSURE ON PAPI PROFILE TO MAINTAIN
 ADEQUATE CLEARANCE OVER CLOSED PORTION OF RWY.
 RWY IN USE IDENTIFIED BY REIL AND 3 SEQUENCED STROBES.



MISSED APCH: MAX IAS 185 kt. Climb on R051 to EMRAG 3000

| | | | | | | | | | |
|--|-----------------|------|-----------------|------|------------------|------|------------------|-----|----------|
| AA DME DIST | 10 | 9 | 8 | 7 | 6 | 5 | 4 | 3.1 | MAPt 2.5 |
| Advisory Altitude 5% | 2600 | 2300 | 2000 | 1700 | 1400 | 1100 | 800 | MDA | MDA |
| Category | A | | B | | C | | D | | |
| VOR/DME | 520(505) - 3000 | | | | | | | | |
| Circling | 560(537) - 1900 | | 560(537) - 2800 | | *760(737) - 3700 | | *920(897) - 4600 | | |
| * Circling CAT C and D NA north of RWY | | | | | | | | | |

Effective: 1 FEB 18

Changes from 9 NOV 17: DME arc lead radials amended.

ELEV 23

CAT A,B,C,D

RWY 23L THR ELEV 23

AUCKLAND

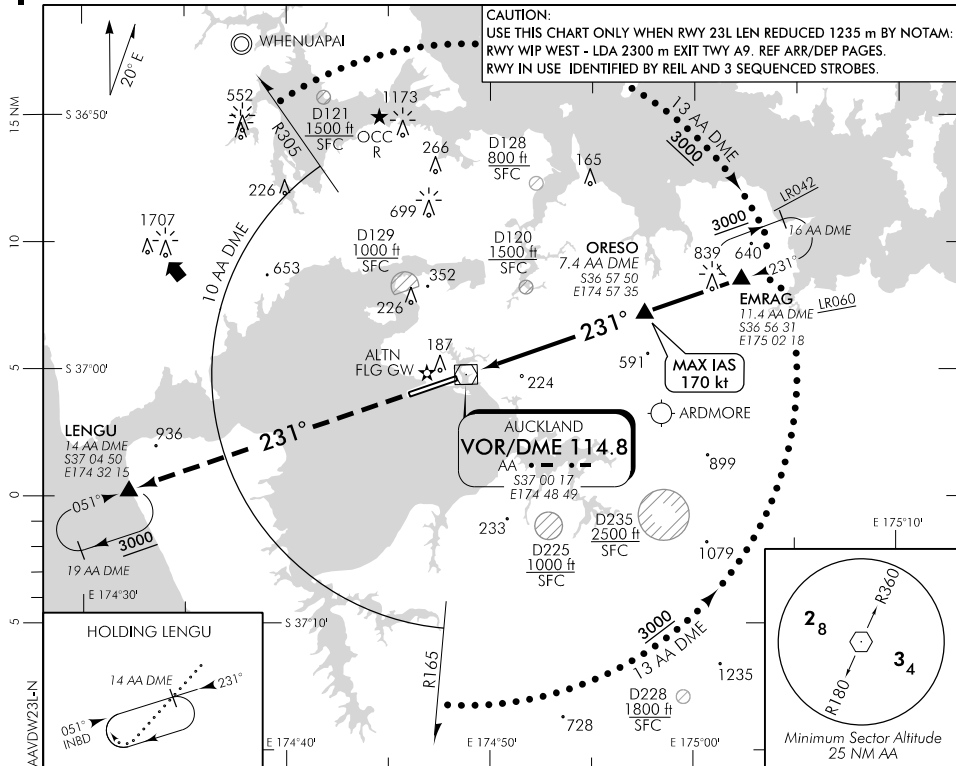
VOR/DME W RWY 23L

AUCKLAND APPROACH: 124.3 129.6

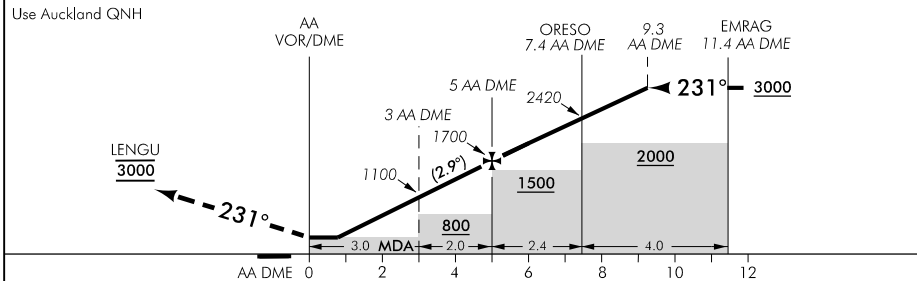
ATIS: 127.8 127.0

TOWER: 118.7 120.95

CAUTION:
 USE THIS CHART ONLY WHEN RWY 23L LEN REDUCED 1235 m BY NOTAM:
 RWY WIP WEST - LDA 2300 m EXIT TWY A9. REF ARR/DEP PAGES.
 RWY IN USE IDENTIFIED BY REIL AND 3 SEQUENCED STROBES.



Changes from 10 NOV 16: ATC call sign amended, TOWER secondary FREQ: D128 and D228 added.



MISSED APCH: MAX IAS 185 kt. Climb on R231 to LENGU 3000

| AA DME DIST | MAP1 AA VOR | 0.7 | 1 | 2 | 3 | 4 | 5 | 6 | 7 | 8 | 9 | 10 |
|----------------------|-------------|-----------------|-----|-----------------|------|------|------------------|------|------|------------------|------|------|
| Advisory Altitude 5% | MDA | MDA | 500 | 800 | 1100 | 1400 | 1700 | 2000 | 2300 | 2600 | 2900 | 3200 |
| Category | | A | | | B | | | C | | | D | |
| VOR/DME | | 420(397) - 1500 | | | | | | | | | | |
| Circling | | 560(537) - 1900 | | 560(537) - 2800 | | | *760(737) - 3700 | | | *920(897) - 4600 | | |

* Circling CAT C and D NA north of RWY

Effective: 9 NOV 17