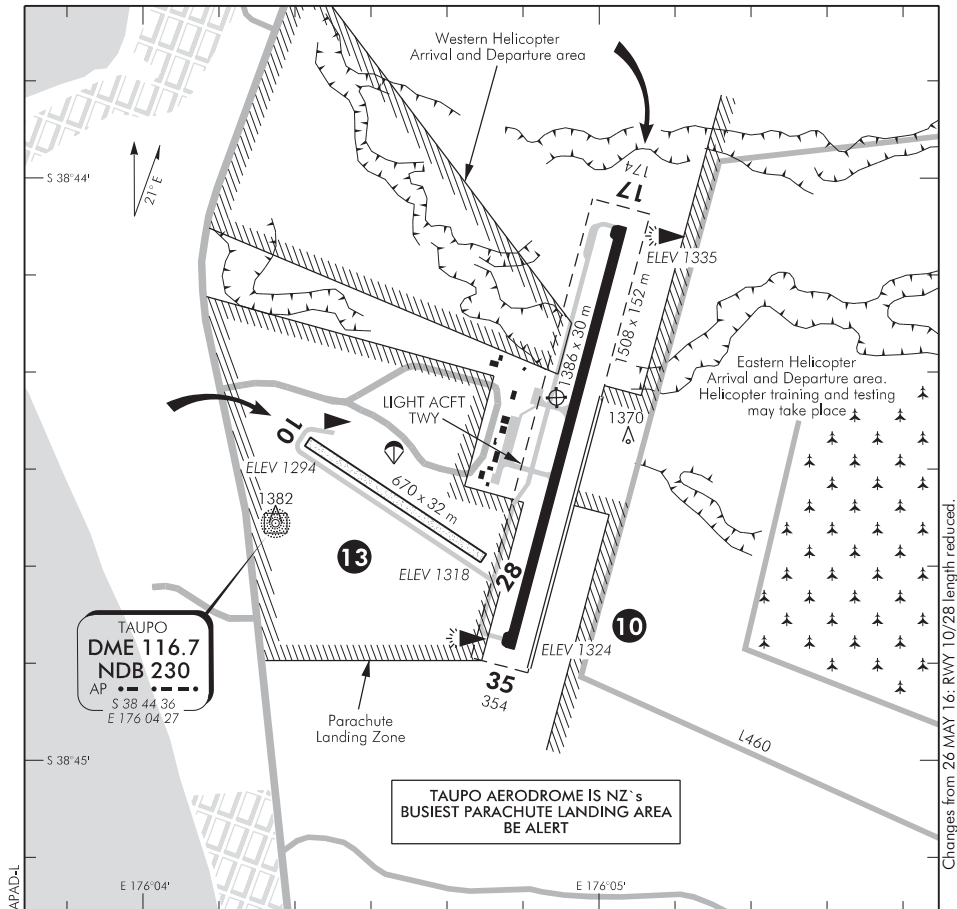


ELEV 1335
 NZAP
 AWIB: 125.2

TAUPO
AERODROME (1)
 UNATTENDED: 118.4



1. Circuit: RWY 10, 17 — Right hand (RWY 17 parachute aircraft may use left hand)
 RWY 28, 35 — Left hand (RWY 35 parachute aircraft may use right hand)
2. RWY 10 not AVBL for take-off unless prior approval and supervision given by Taupo Airport Authority on each occasion.
3. Taxiway to threshold RWY 17 not available during take-off or landing of aircraft with a wing span greater than 23 m on RWY 17/35.
4. **All pilots should avoid using the overhead join procedure at Taupo aerodrome due to the presence of parachute operations.**
5. Parachute aeroplanes may operate in a right-hand circuit for RWY 35 and a left-hand circuit for RWY 17 if required (eastern circuit). Other aeroplanes must use the western circuit and remain west of the shoreline when within the vicinity of the aerodrome (left base for RWY 17/ right base for RWY 35 is not permitted).
6. Aeroplanes joining from the east should position to join final at least 3 NM and report at least 5 NM from the aerodrome.

(continued)

S 38 44 23 E 176 05 04

Effective: 13 SEP 18

© Civil Aviation Authority

TAUPO
AERODROME (1)

TAUPO
AERODROME (2)

7. Helicopters arrival and departure procedures:
 - a) Via east or west arrival/departure areas, not above 600 ft AGL in the circuit area, or:
 - b) Comply with promulgated circuit procedures
8. Arable ground to N, E, S and NW of main RWY cropped to seal edge. Not available for aircraft movement.
9. Grass areas parallel and west of sealed RWY 17/35 not available for take-off or landing. THR area of grass RWY 28 has rough patches.
- ⑩ Aircraft operating in L460 are to avoid RWY 28 final approach.
11. All grass movement areas: braking action may be poor during and after periods of rain or showers.
12. Bird hazard: plovers and magpies frequently present.
- ⑬ Rotorcraft operations of any kind are prohibited on grass RWY 10/28 and in the vicinity of the parachute drop area at all times.
14. U-turns on sealed runway by aircraft heavier than 5700 kg MCTOW permitted only in turning bays.
15. Parasailing operations in Tapuaeharuru Bay (Taupo Bay); lake surface up to 400 ft AGL from 1 November to 31 May annually.
16. **CAUTION:** Wind shear on short finals for RWY 17 in an easterly wind.