

ELEV 111

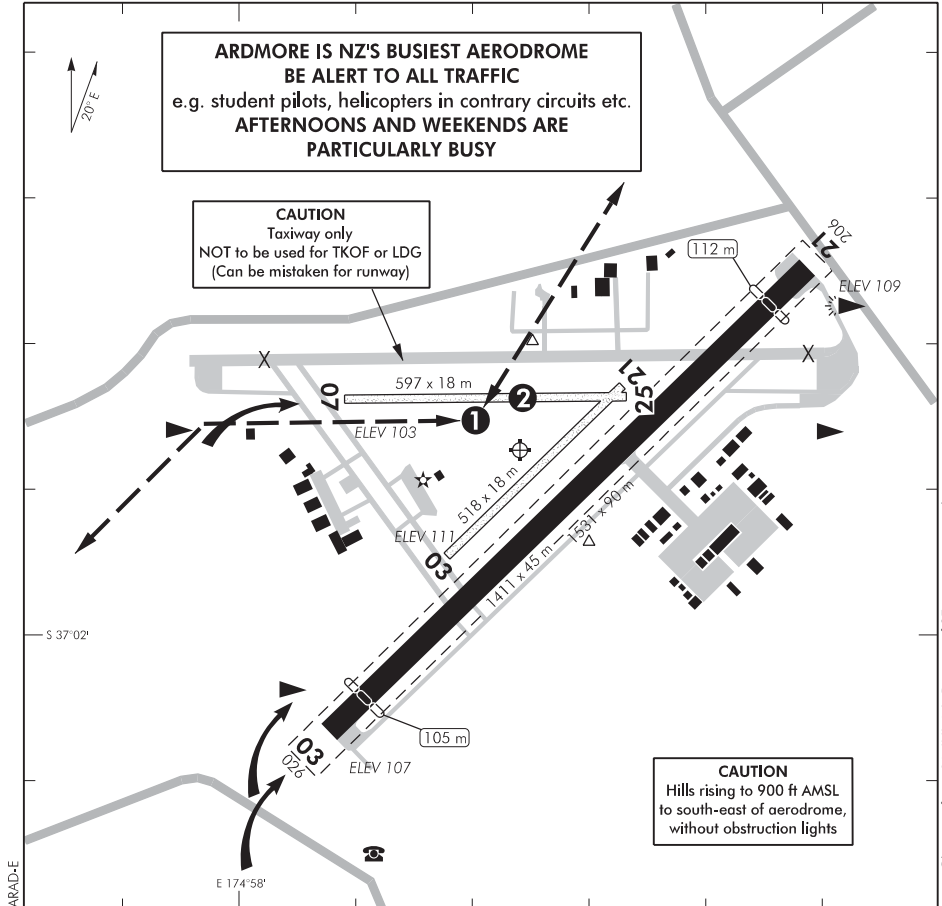
NZAR

NON-CERTIFICATED

AWIB: 121.0

**ARDMORE
AERODROME (1)**

UNICOM/UNATTENDED: 118.1



Preferred arrival routes exist for Ardmore RWY 03/21 and these do not include a straight-in approach. The option in AIP AD 1.5 Aerodrome Operations of joining long final is not recommended.

CAUTION

**High tension transmission lines across the Clevedon Valley
2.7 NM north east RWY 21 THR up to 230 ft AGL and adjacent hills
(497 ft AMSL at Brookby and 861 ft AMSL east of Waterworks).**

S 37 01 47 E 174 58 24

Effective: 15 SEP 16

© Civil Aviation Authority

**ARDMORE
AERODROME (1)**

**ARDMORE
AERODROME (2)**

- ① Helicopter TOWER TLOF. Training circuit crosses grass RWY 07/25 parallel to RWY 03/21.
- ② Take-offs and landings are prohibited on grass RWY 07/25 when helicopters are using the TOWER TLOF and/or TOWER TLOF training circuit. Helicopters may be crossing grass RWY 07/25 at low level. Contact UNICOM prior to using RWY 07/25 grass.
3. **Note:** Aircraft with low propeller clearance exercise extreme caution when transiting between paved areas and grass areas.
4. Helicopters intending to join overhead for autorotation into TOWER TLOF should contact UNICOM first.
5. Circuit:
RWY 03 right hand — TOWER TLOF training circuit left hand
RWY 07 right hand
RWY 21 left hand — TOWER TLOF training circuit right hand
RWY 25 left hand
Aeroplane circuit altitude **not below** 1100 ft AMSL.
Helicopter TLOF circuit altitude **not above** 800 ft AMSL.
Helicopters conducting circuits on the south side of the runway must conform to the fixed wing circuit of 1100 ft AMSL unless departing or arriving via the helicopter south-east/south-west sectors.
6. Simultaneous parallel operations on paved and grass runways 03/21 permitted only for aircraft 2700 kg or less in VFR conditions.
7. Aeroplane night circuit altitude **not below** 1300 ft AMSL.
Helicopter night TLOF circuit altitude **not above** 1000 ft AMSL.
Helicopters conducting circuits on the south side of the runway must conform to the fixed wing circuit at 1300 ft AMSL.

Warning: RWY 21 APAPI use prohibited unless established on runway centreline due to obstacle clearance infringement.

8. Nearest public telephone 14 Princess St, Takanani, 4 km west of aerodrome.
9. **CAUTION:** Bird hazard. Flocks of plovers continually present.
10. Aerobatics, orbits in the circuit, gyrocopters, gliders, model aircraft, parachuting and hot air balloon operations are not permitted at the aerodrome unless with the prior permission of the Airport Authority.