

---

ELEV 298

NZAS

CHRISTCHURCH CONTROL: 120.9

---

**ASHBURTON**  
**ARRIVAL/DEPARTURE**

UNATTENDED: 119.1

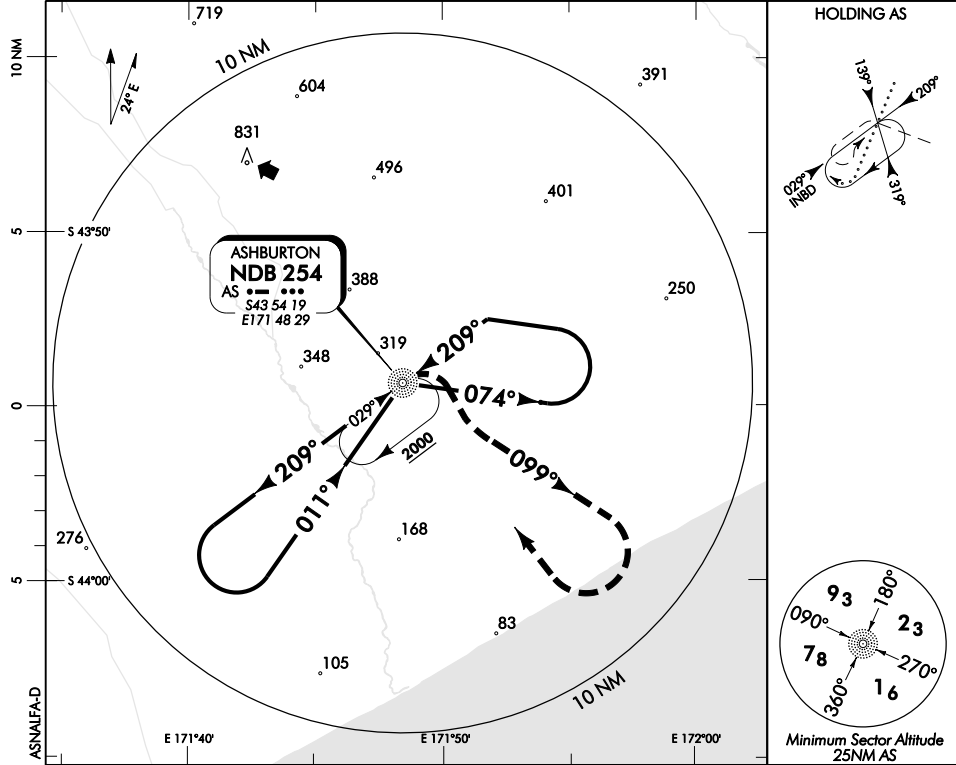
---

***Departure Procedures***

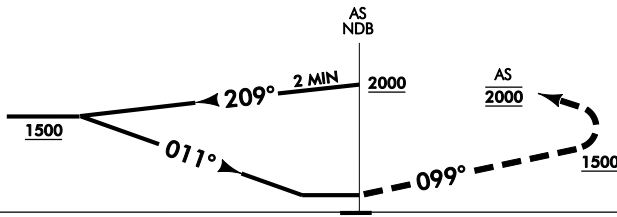
Contact Christchurch Control for clearance and traffic information prior to entering controlled airspace or IMC.

CHRISTCHURCH CONTROL: 120.9

UNATTENDED: 119.1



Use Ashburton QNH



**MISSED APCH:** Climbing RIGHT turn, intercept track 099°, climb to 1500, turn RIGHT enter AS holding 2000

Category	A	B	C	D
Circling	D 790(492) - 2000	D 820(522) - 2800		NA

Changes from 14 FEB 08: Chart title.

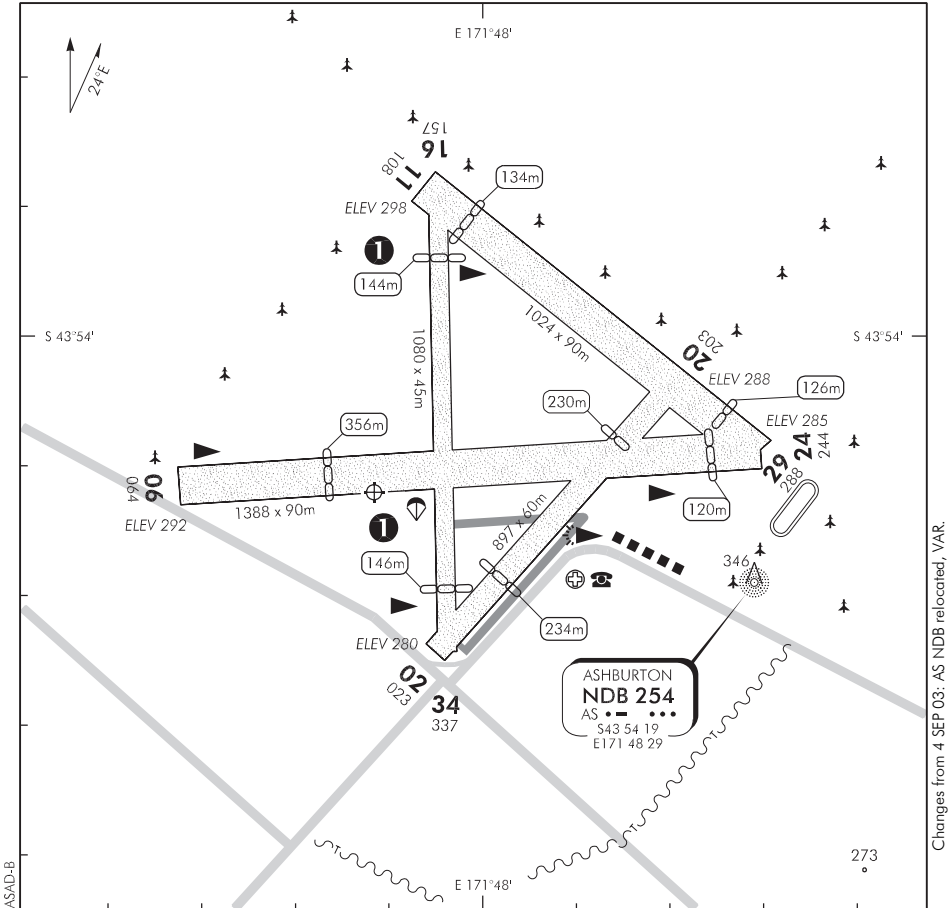
ELEV 298

NZAS

NON-CERTIFICATED

**ASHBURTON  
AERODROME**

UNATTENDED: 119.1



① Night operations RWY 16/34. Displaced thresholds apply: RWY 16 194m  
RWY 34 204m

2. Use mown runways only.
3. Parachute Dropping Zone established over the aerodrome. Surface to 9500ft AMSL.
4. NORDO Microlight operations take place, circuit height 500ft AGL, circuit direction left-hand.
5. **CAUTION:** Bird hazard. Large numbers of gulls, plovers and magpies in vicinity of aerodrome.
6. RWY 16/34 edged by white tyres with white reflectors.
7. Taxiways shown on aerodrome chart edged by white tyres with blue reflectors.
8. Aerobatic box established over the aerodrome 328ft to 3500ft.
9. **CAUTION:** Club competitions generally held last Sunday of each month. A temporary competition fence may be erected on the left side of the active RWY.

S 43 54 12 E 171 47 48\*

**Effective: 14 FEB 08**

© Civil Aviation Authority

**ASHBURTON  
AERODROME**

# ASHBURTON

## OPERATIONAL DATA

NZAS

### RWY

RWY	SFC	Strength	Gp	Slope	ASDA	Take-off distance				LDG DIST
						1:20	1:25	1:30	1:40	
02 20	Gr	ESWL 9080	4	0.26U 0.26D	897	667 663				663* 667*
06 24	Gr	ESWL 9080	8	0.15D 0.15U	1388	1369 1170	1321 1101	1268 1032	1177 894	1032 1268
11 29	Gr	ESWL 9080	7	0.39D 0.39U	1024	898 941	915	890		890 898*
16 34	Gr	ESWL 9080	7	0.34D 0.34U	1080	991 983	965 956	934 936		936 934

\* Landing distance based on a 1:20 approach gradient only

RWY	SFC	Strength	Gp	Slope	ASDA	Take-off distance			LDG DIST
						1:20	1:30	1:40	
#16 #34	Gr	ESWL 9080	7	0.34D 0.34U	1080			876 886	886 876

# Night operations RWY 16/34. Displaced thresholds apply — refer Note ① on aerodrome chart.

### MINIMA

IFR Take-off		
RWY	Day	Night
All	300-1500	NA

### LIGHTING

PAL: 119.1 Transmit 4 pulses within 3 seconds activates lights for 20 minutes. Repeat transmission resets lights for a further 20 minutes.

Runway: 16/34 LIL RWY

Displaced thresholds marked by wing-bars

RWY ends marked with red/green retro-reflective markers

Between RWY end and displaced threshold RWY marked by retro-reflective markers

Taxiway: Edge — Blue lights/retro-reflective markers

WDI: Lit WDI by Club-house

No standby power available

### FACILITIES

Fuel: Avgas 100, Swipecard

### SUPPLEMENTARY

Operator: Ashburton Airport Authority, PO Box 94, Ashburton.  
Tel (03) 308 5139 Fax (03) 308 1836

Available for general use without the permission of the operator.