

ELEV 123

CAT C,D

CHRISTCHURCH RNAV STAR RWY 20 (3)

NZCH

CONTROL (AREA): 129.3 128.1
CONTROL (APCH): 120.9 126.1 128.75

ATIS: 127.2

TOWER: 118.4 119.65

**Navigation requirement: RNAV1
GNSS required**

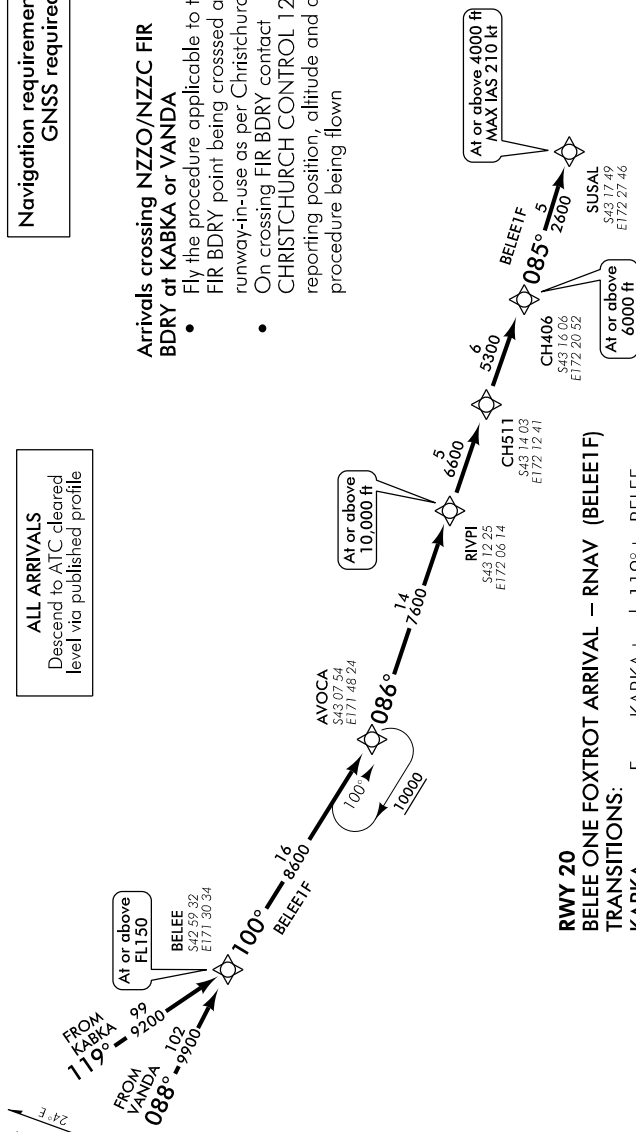
Arrivals crossing NZO/NZCC FIR BDRY at KABKA or VANDA

- Fly the procedure applicable to the FIR BDRY point being crossed and the runway-in-use as per Christchurch ATIS
- On crossing FIR BDRY contact CHRISTCHURCH CONTROL 128.1 MHz reporting position, altitude and arrival procedure being flown

ALL ARRIVALS

Descend to ATC cleared level via published profile

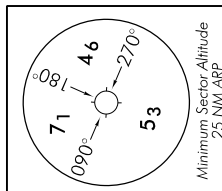
CHRNAVSTAR20-INTL-3-N



RWY 20 BELEE ONE FOXTROT ARRIVAL – RNAV (BELEEF) TRANSITIONS: KABKA – From KABKA track 119° to BELEE VANDA – From VANDA track 088° to BELEE

- Cross BELEE at or above FL150
- Track 100° to AVOCA
- Track 086° via RIVPI and CH511 to CH406
- Cross RIVPI at or above 10,000 ft
- Cross CH406 at or above 6000 ft
- Track 085° to SUSAL at or above 4000 ft, MAX IAS 210 kt

NOT TO SCALE



New chart.

Effective: 9 NOV 17

ELEV 123

CAT C,D

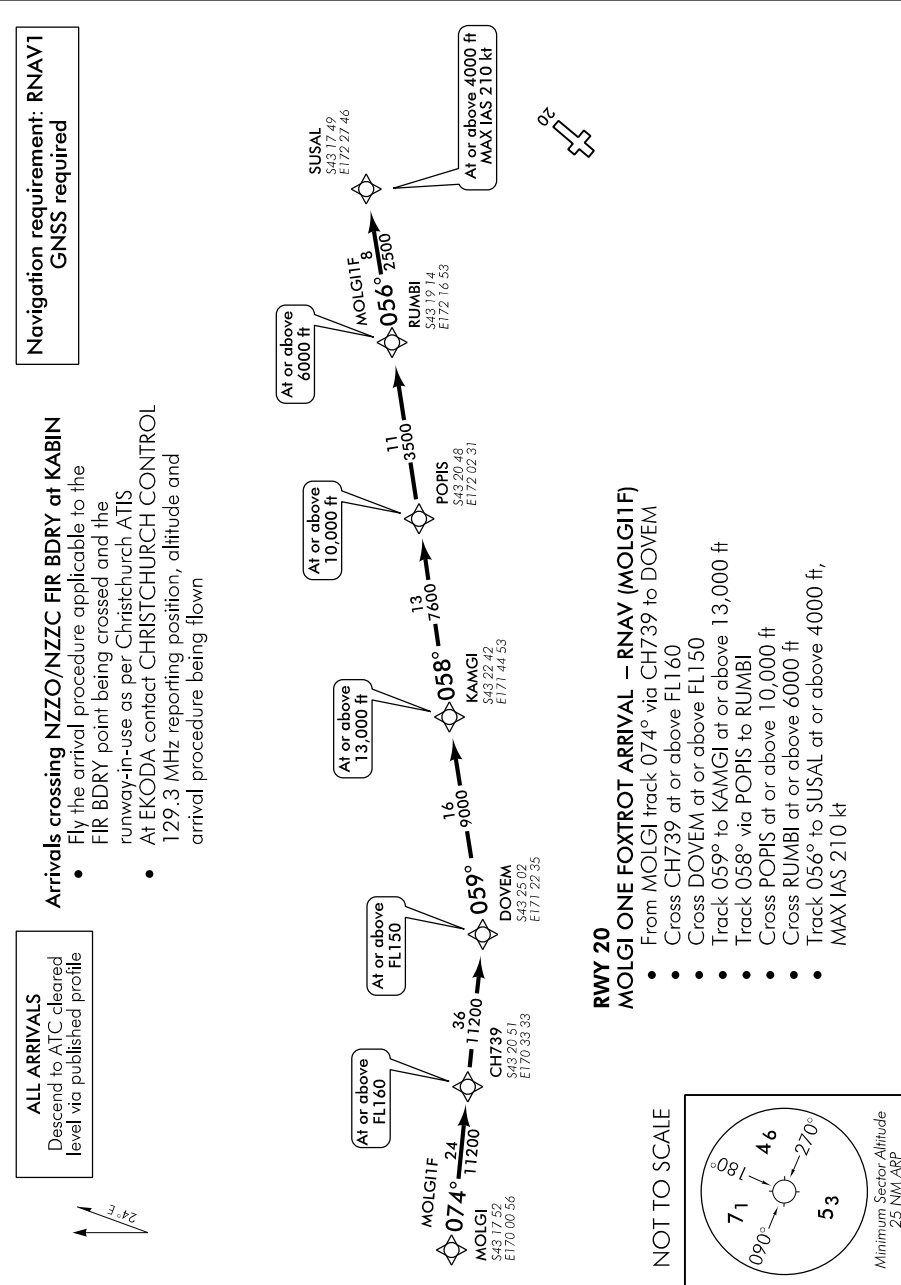
CHRISTCHURCH RNAV STAR RWY 20 (4)

CONTROL (AREA): 129.3 128.1

CONTROL (APCH): 120.9 126.1 128.75

ATIS: 127.2

TOWER: 118.4 119.65



CHRNAVSTAR20-INTL-4-H