

ELEV 123

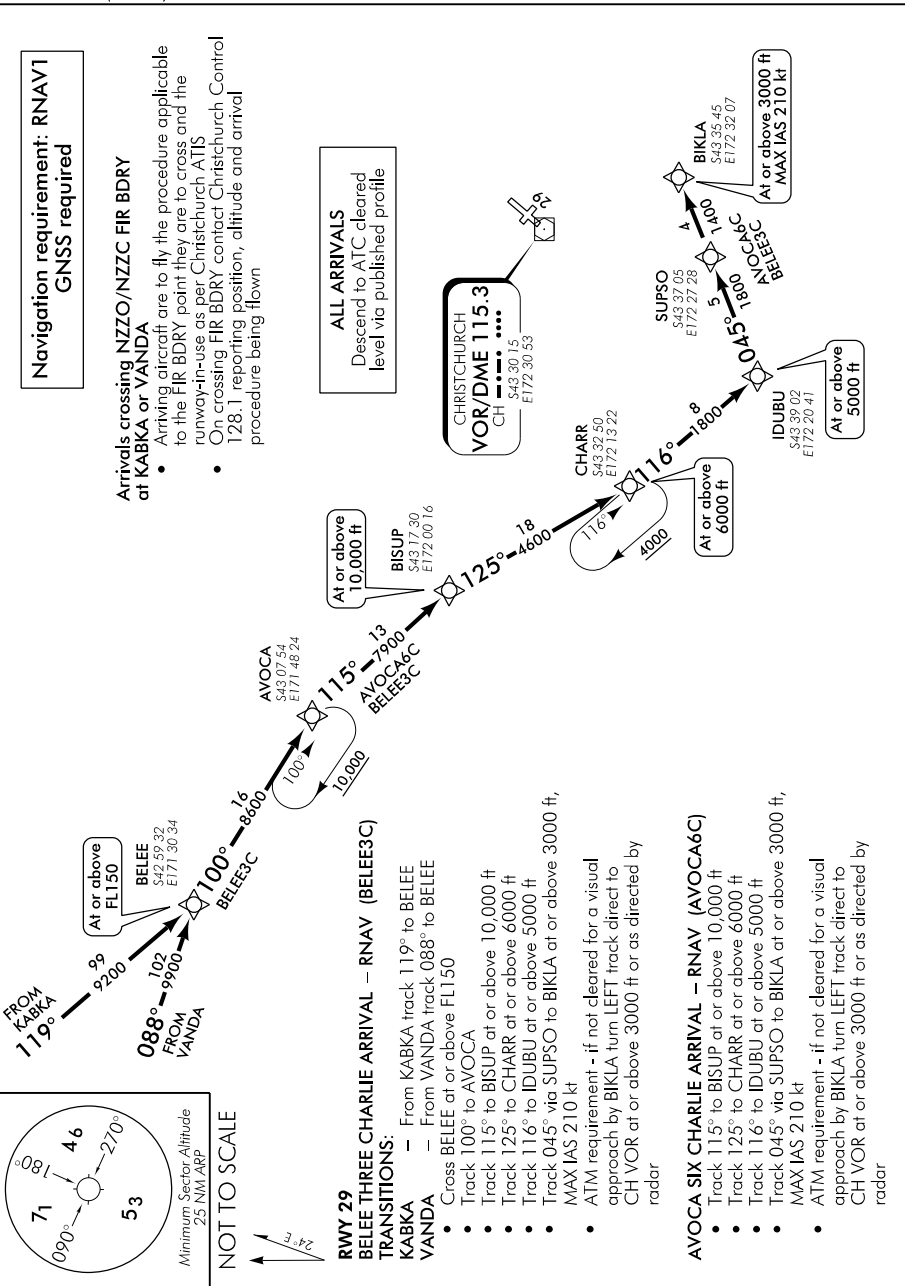
CAT A,B,C,D

CHRISTCHURCH RNAV STAR RWY 29 (1)

CONTROL (AREA): 129.3 128.1
CONTROL (APCH): 120.9 126.1 128.75

ATIS: 127.2

TOWER: 118.4 119.65



CHRNAVSTAR29-1-L

Changes from 26 MAY 16: Entire procedure reviewed.

Effective: 21 JUL 16

© Civil Aviation Authority

CHRISTCHURCH RNAV STAR RWY 29 (1)

ELEV 123

CAT A,B,C,D

NZCH

CHRISTCHURCH RNAV STAR RWY 29 (2)

CONTROL (AREA): 129.3 128.1

CONTROL (APCH): 120.9 126.1 128.75

ATIS: 127.2

TOWER: 118.4 119.65

Navigation requirement: RNAV1
GNSS required

ALL ARRIVALS
Descend to ATC cleared
level via published profile

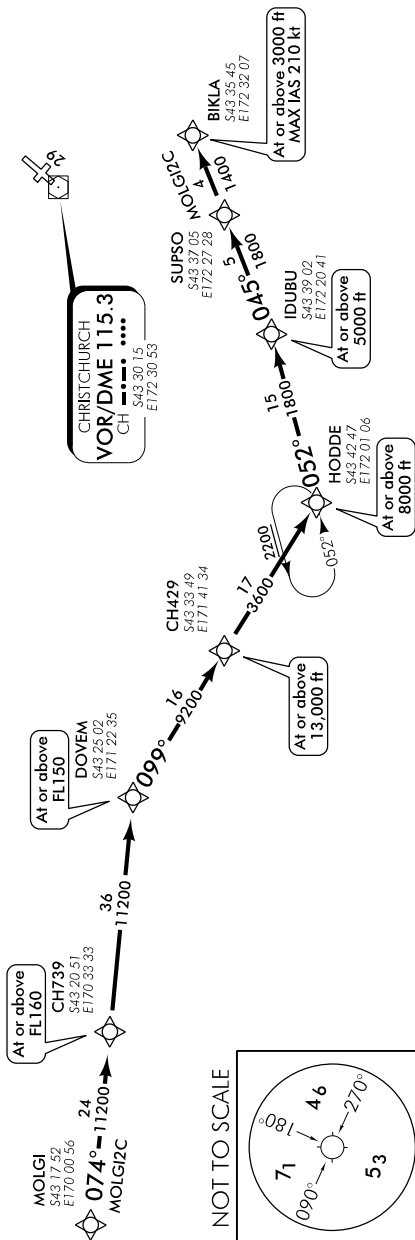
RWY 29

MOLGI TWO CHARLIE ARRIVAL – RNAV (MOLGI2C)

- Track 074° via CH739 to DOVEM
- Cross CH739 at or above FL160
- Cross DOVEM at or above FL150
- Track 099° via CH429 to HODDE
- Cross CH429 at or above 13,000 ft
- Cross HODDE at or above 8000 ft
- Track 052° to IDUBU at or above 5000 ft
- Track 045° via SUPSO to BIKLA at or above 3000 ft, MAX IAS 210 kt
- ATM requirement - if not cleared for a visual approach by BIKLA turn LEFT track direct to CH VOR at or above 3000 ft or as directed by radar

Arrivals crossing NZZO/NZCC FIR BDRY at KABIN

- Fly the arrival procedure applicable to the point the FIR BDRY is being crossed and the runway-in-use as per Christchurch ATIS
- At EKODA contact Christchurch Control 129.3 MHz reporting position, altitude and arrival procedure being flown



Changes from 26 MAY 16: Entire procedure reviewed.

CHRNAVSTAR29-2-K