

ELEV 123

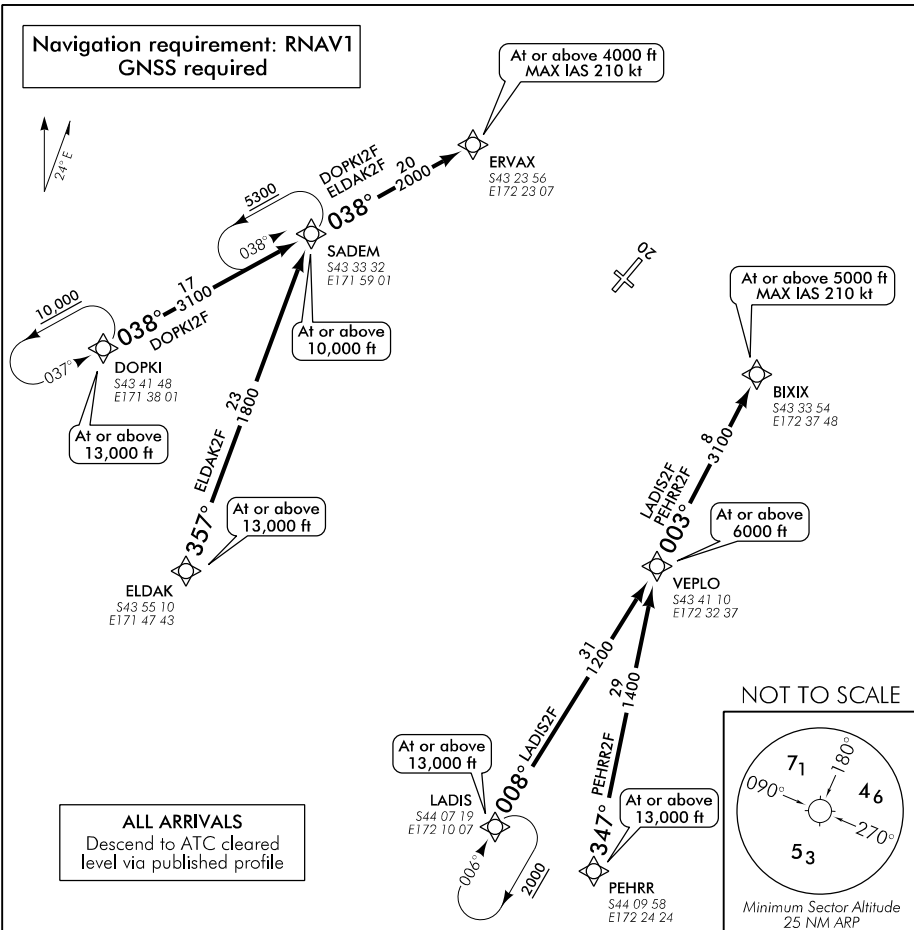
CAT C,D

**CHRISTCHURCH**

NZCH

**RNAV STAR RWY 20 (7)**

CHRISTCHURCH APPROACH: 120.9 126.1 128.75 ATIS: 127.2 TOWER: 118.4 119.65



**RWY 20**

**DOPKI TWO FOXTROT ARRIVAL – RNAV (DOPK12F)**

- Cross DOPKI at or above 13,000 ft
- Track 038° via SADEM to ERVAX
- Cross SADEM at or above 10,000 ft
- Cross ERVAX at or above 4000 ft, MAX IAS 210 kt

**ELDAK TWO FOXTROT ARRIVAL – RNAV (ELDAK2F)**

- Cross ELDKAK at or above 13,000 ft
- Track 357° to SADEM at or above 10,000 ft
- Track 038° to ERVAX at or above 4000 ft, MAX IAS 210 kt

**LADIS TWO FOXTROT ARRIVAL – RNAV (LADIS2F)**

- Cross LADIS at or above 13,000 ft
- Track 008° to VEPL0 at or above 6000 ft
- Track 003° to BIXIX at or above 5000 ft, MAX IAS 210 kt

**PEHRR TWO FOXTROT ARRIVAL – RNAV (PEHRR2F)**

- Cross PEHRR at or above 13,000 ft
- Track 347° to VEPL0 at or above 6000 ft
- Track 003° to BIXIX at or above 5000 ft, MAX IAS 210 kt

CHRNAVSTAR20-7-B

**Effective: 1 FEB 18**

ELEV 123

CAT A,B,C,D

# CHRISTCHURCH RNAV STAR RWY 20 (8)

CHRISTCHURCH CONTROL: 129.4 128.1

CHRISTCHURCH APPROACH: 120.9 126.1 128.75

ATIS: 127.2

TOWER: 118.4 119.65

CHRNAVSTAR20-8-1



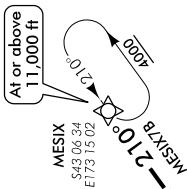
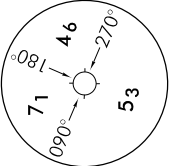
**Navigation requirement: RNAV1  
GNSS required**

### ALL ARRIVALS

- 2 minutes prior to the NZCC/NZCC FIR boundary, contact CHRISTCHURCH CONTROL 129.4 MHz reporting position and level.
- ATC will issue appropriate STAR/Transition.
- Descend via STAR/Transition to ATC cleared level.
- If unable RNAV, expect radar vectors or alternative routing.

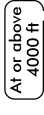
Minimum Sector Altitude  
25 NM ARP

NOT TO SCALE



### RWY 20 MESIX SEVEN BRAVO ARRIVAL – RNAV (MESIX7B)

- Cross MESIX at or above 11,000 ft
- Track 210° to KABGO at or above 6000 ft
- Track 227° via CH409 to ODISI
- Cross CH409 at or above 4000 ft
- Cross ODISI at or above 3000 ft, MAX IAS 210 kt



### REPAP TWO BRAVO ARRIVAL – RNAV (REPAP2B) TRANSITION: LALAP

- Airspace containment not assured CH789 to REPAP
- From LALAP track, 252° to CH789 at or above FL150
  - Track 257° to REPAP at or above 10,000 ft
  - From REPAP track 298° to VIKEX at or above 4000 ft
  - Track 287° to ODISI at or above 3000 ft, MAX IAS 210 kt



Changes from 23 MAY 19: Airspace containment note added from CH789 to REPAP.