

ELEV 123

CAT C,D

# CHRISTCHURCH RNAV STAR RWY 29 (7)

NZCH

CONTROL (AREA): 129.3 128.1

CONTROL (APCH): 120.9 126.1 128.75

ATIS: 127.2

TOWER: 118.4 119.65

**Navigation requirement: RNAV1  
GNSS required**

**ALL ARRIVALS**  
Descend to ATC cleared  
level via published profile

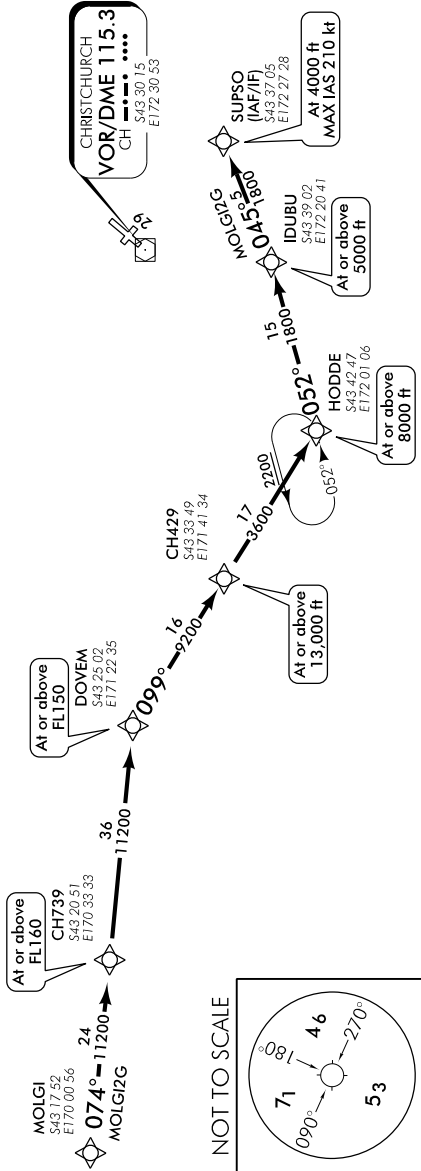
### RWY 29 MOLGI TWO GOLF ARRIVAL – RNAV (MOLGI2G)

- Track 074° via CH739 to DOVEM
- Cross CH739 at or above FL160
- Cross DOVEM at or above FL150
- Track 099° via CH429 to HODDE
- Cross CH429 at or above 13,000 ft
- Cross HODDE at or above 8000 ft
- Track 052° to IDUBU at or above 5000 ft
- Track 045° to SUPSO
- Cross SUPSO at 4000 ft, MAX IAS 210 kt

### Arrivals crossing NZZO/NZCC FIR BDRY at KABIN

- Fly the arrival procedure applicable to the point the FIR BDRY is being crossed and the runway-in-use as per Christchurch ATIS
- At EKODA contact Christchurch Control 129.3 MHz reporting position, altitude and arrival procedure being flown

CHRNAVSTAR29-7-E



Changes from 26 MAY 16: MOLGI2G becomes MOLGI2G, IDUBU to SUPSO MSA.

ELEV 123

CAT C,D

# CHRISTCHURCH

## RNAV STAR RWY 29 (8)

CONTROL: 120.9 126.1 128.75

ATIS: 127.2

TOWER: 118.4 119.65



**ALL ARRIVALS**  
Descend to ATC cleared level via published profile.

**Navigation requirement: RNAV1  
GNSS required**

### RWY 29

#### KIDAL ONE GOLF ARRIVAL – RNAV (KIDAL1G)

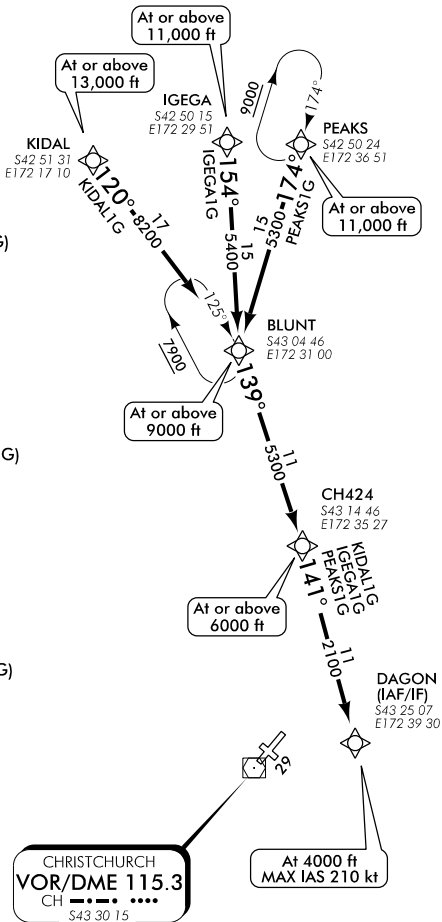
- Cross KIDAL at or above 13,000 ft
- Track 120° to BLUNT at or above 9000 ft
- Track 139° to CH424 at or above 6000 ft
- Track 141° to DAGON
- Cross DAGON at 4000 ft, MAX IAS 210 kt

#### IGEGA ONE GOLF ARRIVAL – RNAV (IGEGA1G)

- Cross IGEGA at or above 11,000 ft
- Track 154° to BLUNT at or above 9000 ft
- Track 139° to CH424 at or above 6000 ft
- Track 141° to DAGON
- Cross DAGON at 4000 ft, MAX IAS 210 kt

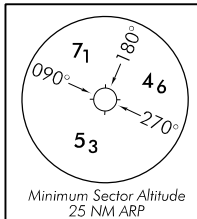
#### PEAKS ONE GOLF ARRIVAL – RNAV (PEAKS1G)

- Cross PEAKS at or above 11,000 ft
- Track 174° to BLUNT at or above 9000 ft
- Track 139° to CH424 at or above 6000 ft
- Track 141° to DAGON
- Cross DAGON at 4000 ft, MAX IAS 210 kt



Changes from 12 NOV 15: TWR FREQ and FREQ editorial.

NOT TO SCALE



CHRNAVSTAR29-8-D