

ELEV 123

CAT A,B,C,D

NZCH

CHRISTCHURCH RNAV STAR RWY 02 (2)

CHRISTCHURCH CONTROL: 129.3 128.1

CHRISTCHURCH APPROACH: 120.9 126.1 128.75

ATIS: 127.2

TOWER: 118.4 119.65

Navigation requirement: RNAV1
GNSS required

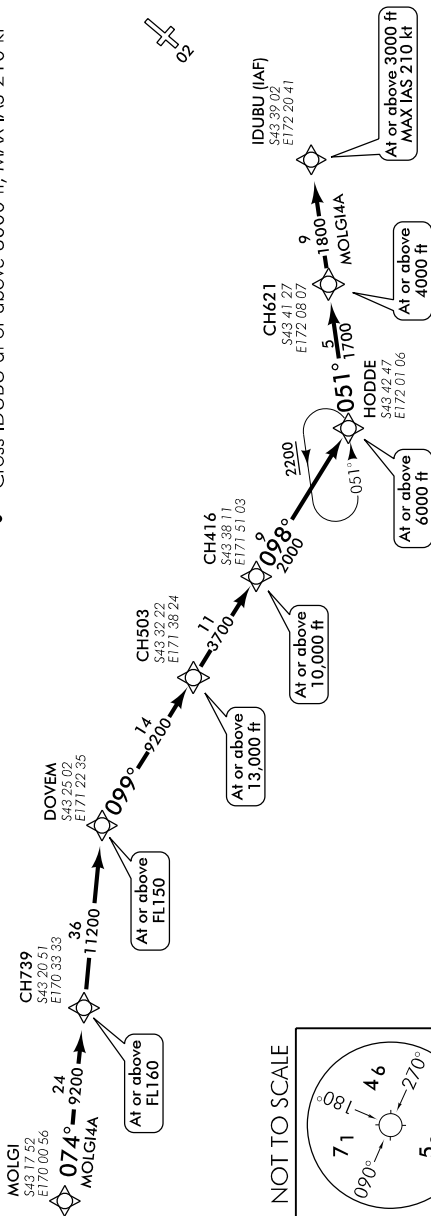
RWY 02

MOLGI FOUR ALFA ARRIVAL – RNAV (MOLGI4A)

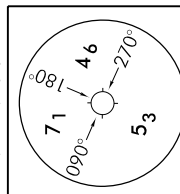
- Track 074° via CH739 to DOVEM
- Cross CH739 at or above FL160
- Cross DOVEM at or above FL150
- Track 099° via CH503 to CH416
- Cross CH503 at or above 13,000 ft
- Cross CH416 at or above 10,000 ft
- Track 098° to HODDE at or above 6000 ft
- Track 051° via CH621 to IDUBU
- Cross CH621 at or above 4000 ft
- Cross IDUBU at or above 3000 ft, MAX IAS 210 kt

ALL ARRIVALS

- At EKODA contact CHRISTCHURCH CONTROL 129.3 MHz reporting position and level.
- ATC will issue appropriate STAR/Transition.
- Descend via STAR/Transition to ATC cleared level.
- If unable RNAV, expect radar vectors or alternative routing.



NOT TO SCALE



Changes from 1 FEB 18: IDUBU to ALBAD segment removed, All Arrivals text amended.