

ELEV 123

CAT A,B,C,D

# CHRISTCHURCH RNAV STAR RWY 29 (3)

NZCH

CONTROL: 120.9 126.1 128.75

ATIS: 127.2

TOWER: 118.4 119.65



**ALL ARRIVALS**  
Descend to ATC cleared level via published profile

**Navigation requirement: RNAV1  
GNSS required**

### RWY 29

#### KIDAL FIVE CHARLIE ARRIVAL – RNAV (KIDAL5C)

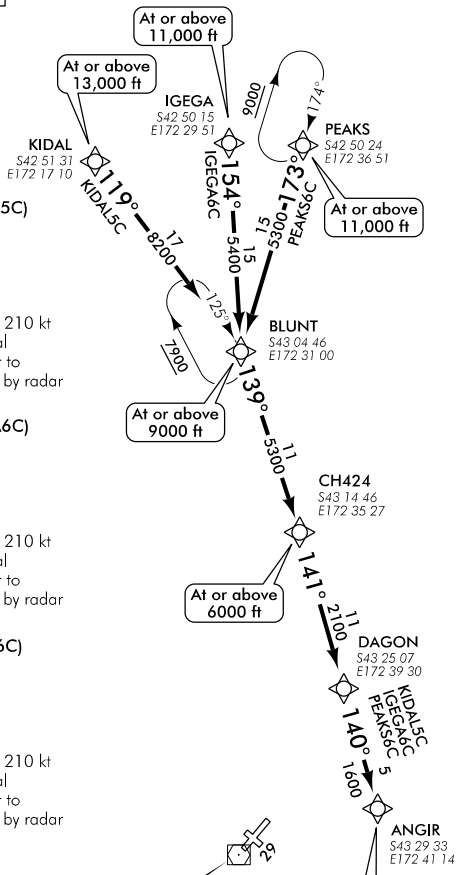
- Cross KIDAL at or above 13,000 ft
- Track 119° to BLUNT at or above 9000 ft
- Track 139° to CH424 at or above 6000 ft
- Track 141° to DAGON
- Track 140° to ANGIR
- Cross ANGIR at or above 3000 ft, MAX IAS 210 kt
- ATM requirement – if not cleared for a visual approach by ANGIR turn RIGHT track direct to CH VOR at or above 3000 ft or as directed by radar

#### IGEKA SIX CHARLIE ARRIVAL – RNAV (IGEKA6C)

- Cross IGEKA at or above 11,000 ft
- Track 154° to BLUNT at or above 9000 ft
- Track 139° to CH424 at or above 6000 ft
- Track 141° to DAGON
- Track 140° to ANGIR
- Cross ANGIR at or above 3000 ft, MAX IAS 210 kt
- ATM requirement – if not cleared for a visual approach by ANGIR turn RIGHT track direct to CH VOR at or above 3000 ft or as directed by radar

#### PEAKS SIX CHARLIE ARRIVAL – RNAV (PEAKS6C)

- Cross PEAKS at or above 11,000 ft
- Track 173° to BLUNT at or above 9000 ft
- Track 139° to CH424 at or above 6000 ft
- Track 141° to DAGON
- Track 140° to ANGIR
- Cross ANGIR at or above 3000 ft, MAX IAS 210 kt
- ATM requirement – if not cleared for a visual approach by ANGIR turn RIGHT track direct to CH VOR at or above 3000 ft or as directed by radar



CHRNAVSTAR29-3-L

Changes from 21 JUL 16: Pageination.

**Effective: 9 NOV 17**

© Civil Aviation Authority

# CHRISTCHURCH RNAV STAR RWY 29 (3)

ELEV 123

CAT A,B,C,D

# CHRISTCHURCH RNAV STAR RWY 29 (4)

NZCH

CONTROL: 120.9 126.1 128.75

ATIS: 127.2

TOWER: 118.4 119.65

CHRNAVSTAR29-4-C

### RWY 29

#### DOPKI TWO CHARLIE ARRIVAL – RNAV (DOPKI2C)

- Cross DOPKI at or above 13,000 ft
- Track 070° to HODDE at or above 8000 ft
- Track 052° to IDUBU at or above 5000 ft
- Track 045° via SUPSO to BIKLA at or above 3000 ft, MAX IAS 210 kt
- ATM requirement – If not cleared for visual approach by BIKLA turn LEFT track direct to CH VOR at or above 3000 ft or as directed by radar

#### ELDAK TWO CHARLIE ARRIVAL – RNAV (ELDAK2C)

- Cross ELDAK at or above 13,000 ft
- Track 014° to HODDE at or above 8000 ft
- Track 052° to IDUBU at or above 5000 ft
- Track 045° via SUPSO to BIKLA at or above 3000 ft, MAX IAS 210 kt
- ATM requirement – If not cleared for visual approach by BIKLA turn LEFT track direct to CH VOR at or above 3000 ft or as directed by radar

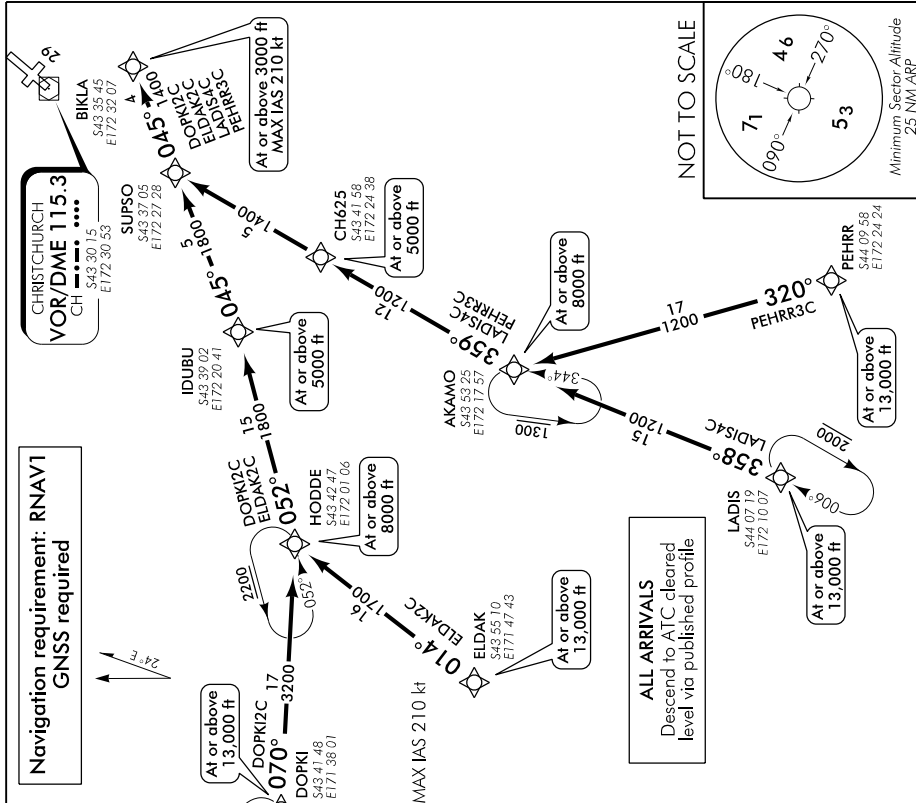
#### LADIS FOUR CHARLIE ARRIVAL – RNAV (LADIS4C)

- Cross LADIS at or above 13,000 ft
- Track 358° to AKAMO at or above 8000 ft
- Track 359° via CH625 to SUPSO
- Cross CH625 at or above 5000 ft
- Track 045° to BIKLA
- Cross BIKLA at or above 3000 ft, MAX IAS 210 kt
- ATM requirement – If not cleared for visual approach by BIKLA turn LEFT track direct to CH VOR at or above 3000 ft or as directed by radar

#### PEHRR THREE CHARLIE ARRIVAL – RNAV (PEHRR3C)

- Cross PEHRR at or above 13,000 ft
- Track 320° to AKAMO at or above 8000 ft
- Track 359° via CH625 to SUPSO
- Cross CH625 at or above 5000 ft
- Track 045° to BIKLA
- Cross BIKLA at or above 3000 ft, MAX IAS 210 kt
- ATM requirement – If not cleared for visual approach by BIKLA turn LEFT track direct to CH VOR at or above 3000 ft or as directed by radar

Navigation requirement: RNAV/GNSS required



ALL ARRIVALS  
Descend to ATC cleared level via published profile

Changes from 21 JUL 16: Pagination.