

ELEV 123

CAT A,B,C,D

CHRISTCHURCH RNAV STAR RWY 29 (3)

NZCH

CHRISTCHURCH APPROACH: 120.9 126.1 128.75 ATIS: 127.2 TOWER: 118.4 119.65



ALL ARRIVALS

- Descend to ATC cleared level via published profile.
- If unable RNAV (RNP), request visual APCH with CHRISTCHURCH APPROACH. If not cleared for a visual approach by ABVIM turn RIGHT, track direct to CH VOR at or above 3000 ft or as directed by radar.

Navigation requirement: RNAV1
GNSS required

RWY 29

KIDAL FOUR GOLF ARRIVAL – RNAV (GNSS) (KIDAL4G)

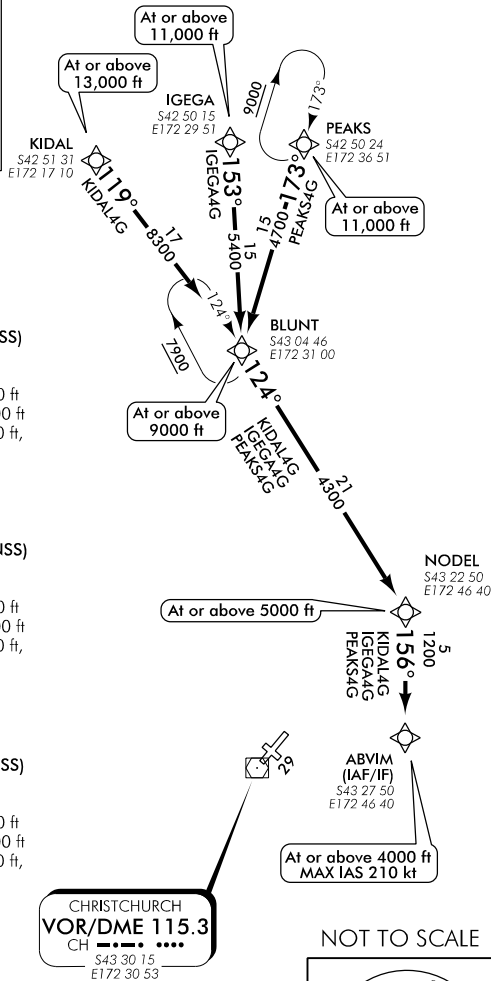
- Cross KIDAL at or above 13,000 ft
- Track 119° to BLUNT at or above 9000 ft
- Track 124° to NODEL at or above 5000 ft
- Track 156° to ABVIM at or above 4000 ft, MAX IAS 210 kt

IGEGA FOUR GOLF ARRIVAL – RNAV (GNSS) (IGEGA4G)

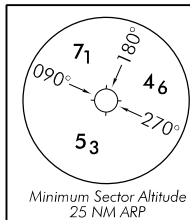
- Cross IGEGA at or above 11,000 ft
- Track 153° to BLUNT at or above 9000 ft
- Track 124° to NODEL at or above 5000 ft
- Track 156° to ABVIM at or above 4000 ft, MAX IAS 210 kt

PEAKS FOUR GOLF ARRIVAL – RNAV (GNSS) (PEAKS4G)

- Cross PEAKS at or above 11,000 ft
- Track 173° to BLUNT at or above 9000 ft
- Track 124° to NODEL at or above 5000 ft
- Track 156° to ABVIM at or above 4000 ft, MAX IAS 210 kt



NOT TO SCALE



CHRNAVSTAR29-3-R

Changes from 26 MAR 20: PEAKS HLDG pattern INBD course updated.

Effective: 16 JUL 20

ELEV 123

CAT A,B,C,D

NZCH

CHRISTCHURCH RNAV STAR RWY 29 (4)

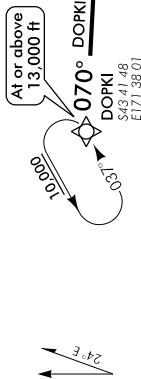
CHRISTCHURCH APPROACH: 120.9 126.1 128.75 ATIS: 127.2 TOWER: 118.4 119.65

CHR\NAVSTAR29-4-K

RWY 29

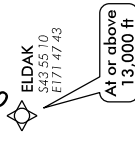
DOPKI FOUR GOLF ARRIVAL – RNAV (DOPKI4G)

- Cross DOPKI at or above 13,000 ft
- Track 070° to HODDE at or above 8000 ft
- Track 051° to IDUBU at or above 5000 ft
- Track 045° to SUPSO
- Cross SUPSO at or above 4000 ft, MAX IAS 210 kt



ELDAK FOUR GOLF ARRIVAL – RNAV (ELDAK4G)

- Cross ELDAK at or above 13,000 ft
- Track 014° to HODDE at or above 8000 ft
- Track 051° to IDUBU at or above 5000 ft
- Track 045° to SUPSO
- Cross SUPSO at or above 4000 ft, MAX IAS 210 kt

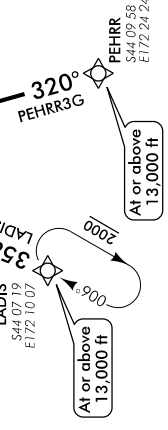


LADIS THREE GOLF ARRIVAL – RNAV (LADIS3G)

- Cross LADIS at or above 13,000 ft
- Track 358° to AKAMO at or above 8000 ft
- Track 344° to IDUBU at or above 5000 ft
- Track 045° to SUPSO
- Cross SUPSO at or above 4000 ft, MAX IAS 210 kt

PEHRR THREE GOLF ARRIVAL – RNAV (PEHRR3G)

- Cross PEHRR at or above 13,000 ft
- Track 320° to AKAMO at or above 8000 ft
- Track 344° to IDUBU at or above 5000 ft
- Track 045° to SUPSO
- Cross SUPSO at or above 4000 ft, MAX IAS 210 kt



Navigation requirement: RNAV1
GNSS required

CHRISTCHURCH
VOR/DME 115.3
CH
S43 30 15
E172 30 53

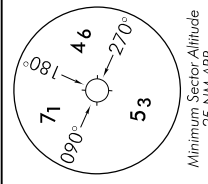
SUPSO (IAF/IF)
S43 37 05
E172 27 28

At or above 4000 ft
MAX IAS 210 kt

ALL ARRIVALS

- Descend to ATC cleared level via published profile.
- If unable RNAV (RNP) request visual APCH with CHRISTCHURCH APPROACH. If not cleared for a visual approach by SUPSO turn LEFT, track direct to CH VOR at or above 3000 ft or as directed by radar.

NOT TO SCALE



Changes from 12 SEP 19: SUPSO crossing altitude updated.