

ELEV 123

CAT C,D

# CHRISTCHURCH RNAV STAR RWY 29 (7)

NZCH

CHRISTCHURCH CONTROL: 129.3 128.1

CHRISTCHURCH APPROACH: 120.9 126.1 128.75

ATIS: 127.2

TOWER: 118.4 119.65

**Navigation requirement: RNAV1  
GNSS required**

**ALL ARRIVALS**  
Descend to ATC cleared level via published profile

CHRNAVSTAR29-7-G



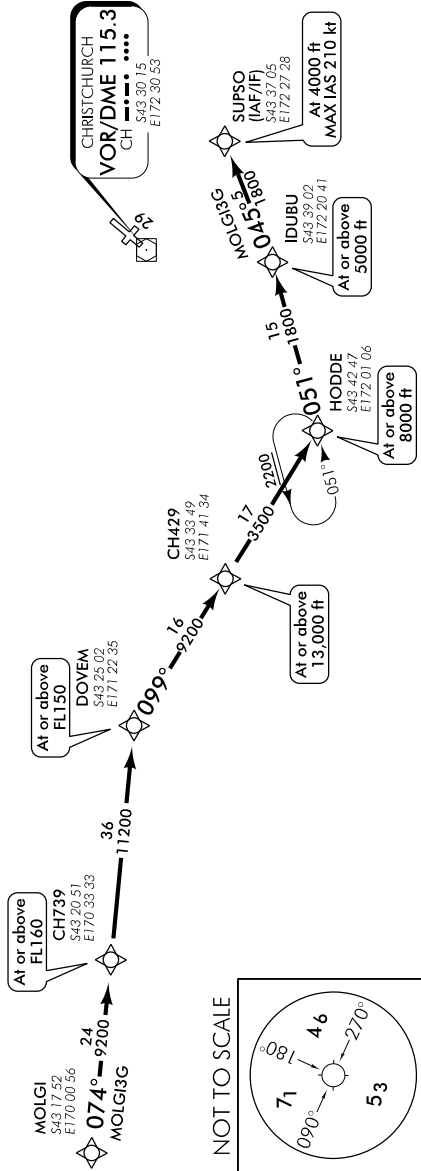
### Arrivals crossing NZZO/NZZC FIR BDRY at KABIN

- Fly the arrival procedure applicable to the point the FIR BDRY is being crossed and the runway-in-use as per Christchurch ATIS
- At EKODA contact CHRISTCHURCH CONTROL 129.3 MHz reporting position, altitude and arrival procedure being flown

### RWY 29

#### MOLGI THREE GOLF ARRIVAL – RNAV (MOLGI3G)

- From MOLGI track 074° via CH739 to DOVEM
- Cross CH739 at or above FL160
- Cross DOVEM at or above FL150
- Track 099° via CH429 to HODDE
- Cross CH429 at or above 13,000 ft
- Cross HODDE at or above 8000 ft
- Track 051° to IDUBU at or above 5000 ft
- Track 045° to SUPSO
- Cross SUPSO at 4000 ft, MAX IAS 210 kt



**Effective: 1 FEB 18**

© Civil Aviation Authority

# CHRISTCHURCH RNAV STAR RWY 29 (7)

Changes from 9 NOV 17: Procedure maintenance, COM header ATC call sign.

ELEV 123

CAT C,D

# CHRISTCHURCH

## RNAV STAR RWY 29 (8)

CHRISTCHURCH APPROACH: 120.9 126.1 128.75

ATIS: 127.2

TOWER: 118.4 119.65



**ALL ARRIVALS**  
Descend to ATC cleared level via published profile.

Navigation requirement: RNAV1  
GNSS required

### RWY 29

#### KIDAL TWO GOLF ARRIVAL – RNAV (KIDAL2G)

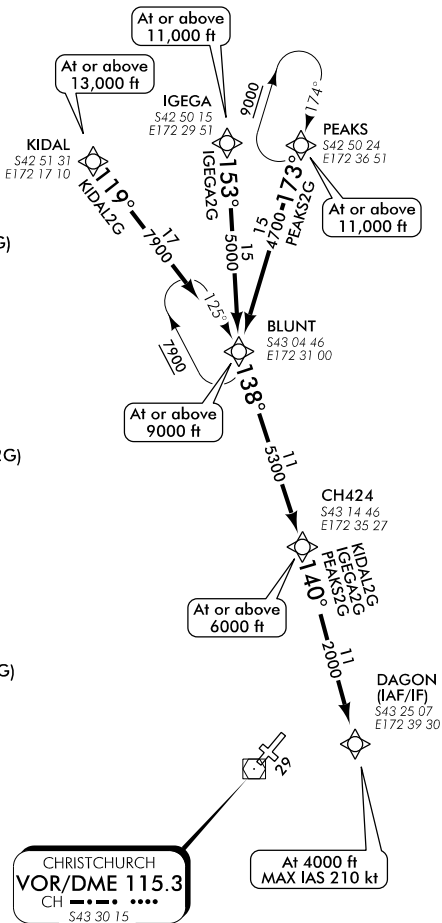
- Cross KIDAL at or above 13,000 ft
- Track 119° to BLUNT at or above 9000 ft
- Track 138° to CH424 at or above 6000 ft
- Track 140° to DAGON
- Cross DAGON at 4000 ft, MAX IAS 210 kt

#### IGEGA TWO GOLF ARRIVAL – RNAV (IGEGA2G)

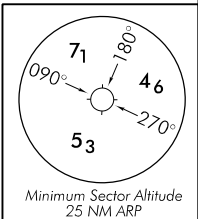
- Cross IGEGA at or above 11,000 ft
- Track 153° to BLUNT at or above 9000 ft
- Track 138° to CH424 at or above 6000 ft
- Track 140° to DAGON
- Cross DAGON at 4000 ft, MAX IAS 210 kt

#### PEAKS TWO GOLF ARRIVAL – RNAV (PEAKS2G)

- Cross PEAKS at or above 11,000 ft
- Track 173° to BLUNT at or above 9000 ft
- Track 138° to CH424 at or above 6000 ft
- Track 140° to DAGON
- Cross DAGON at 4000 ft, MAX IAS 210 kt



NOT TO SCALE



Changes from 9 NOV 17: Procedure maintenance, COM header ATC callsign.

CHRNAVSTAR29-8-F

Effective: 1 FEB 18

© Civil Aviation Authority

# CHRISTCHURCH

## RNAV STAR RWY 29 (8)