

ELEV 123

CAT C,D

CHRISTCHURCH RNAV STAR RWY 29 (9)

NZCH

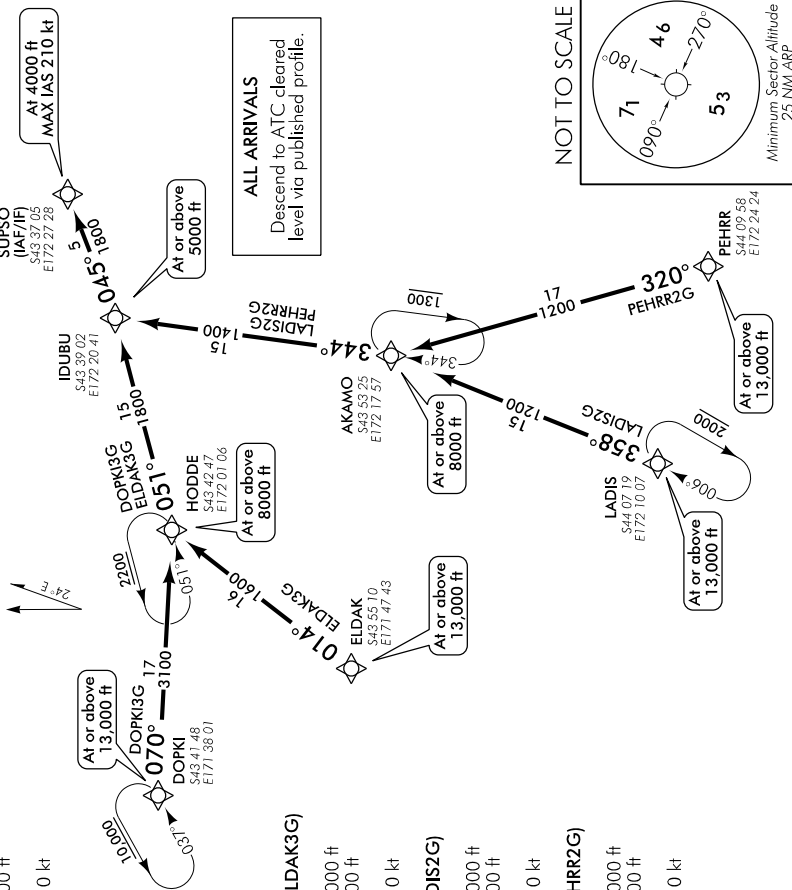
CHRISTCHURCH APPROACH: 120.9 126.1 128.75 ATIS: 127.2 TOWER: 118.4 119.65

CHRNAVSTAR29-9-HI

RWY 29

DOPKI THREE GOLF ARRIVAL – RNAV (DOPKI3G)

- Cross DOPKI at or above 13,000 ft
- Track 070° to HODDE at or above 8000 ft
- Track 051° to IDUBU at or above 5000 ft
- Track 045° to SUPSO
- Cross SUPSO at 4000 ft, MAX IAS 210 kt



ELDAK THREE GOLF ARRIVAL – RNAV (ELDAK3G)

- Cross ELDAK at or above 13,000 ft
- Track 014° to HODDE at or above 8000 ft
- Track 051° to IDUBU at or above 5000 ft
- Track 045° to SUPSO
- Cross SUPSO at 4000 ft, MAX IAS 210 kt

LADIS TWO GOLF ARRIVAL – RNAV (LADIS2G)

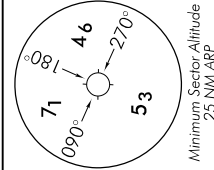
- Cross LADIS at or above 13,000 ft
- Track 358° to AKAMO at or above 8000 ft
- Track 344° to IDUBU at or above 5000 ft
- Track 045° to SUPSO
- Cross SUPSO at 4000 ft, MAX IAS 210 kt

PEHRR TWO GOLF ARRIVAL – RNAV (PEHRR2G)

- Cross PEHRR at or above 13,000 ft
- Track 320° to AKAMO at or above 8000 ft
- Track 344° to IDUBU at or above 5000 ft
- Track 045° to SUPSO
- Cross SUPSO at 4000 ft, MAX IAS 210 kt

ALL ARRIVALS
Descend to ATC cleared level via published profile.

NOT TO SCALE



Effective: 1 FEB 18

© Civil Aviation Authority

CHRISTCHURCH RNAV STAR RWY 29 (9)

Changes from 9 NOV 17: Procedure maintenance, COM header ATC collision.

ELEV 123

CAT C,D

CHRISTCHURCH

NZCH

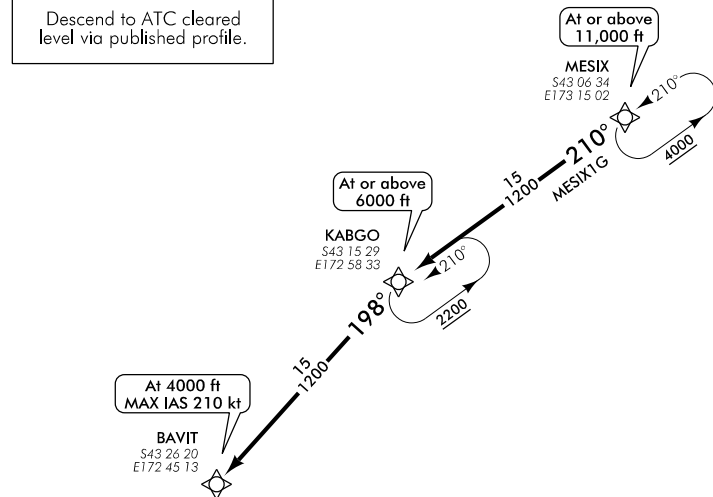
RNAV STAR RWY 29 (10)

CHRISTCHURCH APPROACH: 120.9 126.1 128.75 ATIS: 127.2 TOWER: 118.4 119.65



Navigation requirement: RNAV1
GNSS required

ALL ARRIVALS
Descend to ATC cleared level via published profile.

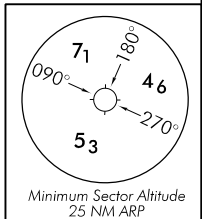


CHRISTCHURCH
VOR/DME 115.3
 CH **— — — — —** **••••**
 S43 30 15
 E172 30 53

RWY 29 MESIX ONE GOLF ARRIVAL – RNAV (MESIX1G)

- Cross MESIX at or above 11,000 ft
- Track 210° to KABGO at or above 6000 ft
- Track 198° to BAVIT
- Cross BAVIT at 4000 ft, MAX IAS 210 kt

NOT TO SCALE



Changes from 9 NOV 17: COM header, ATC call sign, KABGO hold lower limit.

CHRNAVSTAR29-10-F

Effective: 1 FEB 18

© Civil Aviation Authority

CHRISTCHURCH

RNAV STAR RWY 29 (10)