

ELEV 123

CAT C,D

**CHRISTCHURCH**

NZCH

**RNAV STAR RWY 29 (9)**

CHRISTCHURCH APPROACH: 120.9 126.1 128.75 ATIS: 127.2 TOWER: 118.4 119.65

CHRNAVSTAR29-9-1

**RWY 29**

**DOPKI THREE GOLF ARRIVAL – RNAV (DOPKI3G)**

- Cross DOPKI at or above 13,000 ft
- Track 070° to HODDE at or above 8000 ft
- Track 051° to IDUBU at or above 5000 ft
- Track 045° to SUPSO
- Cross SUPSO at 4000 ft, MAX IAS 210 kt

**ELDAK THREE GOLF ARRIVAL – RNAV (ELDAK3G)**

- Cross ELDAK at or above 13,000 ft
- Track 014° to HODDE at or above 8000 ft
- Track 051° to IDUBU at or above 5000 ft
- Track 045° to SUPSO
- Cross SUPSO at 4000 ft, MAX IAS 210 kt

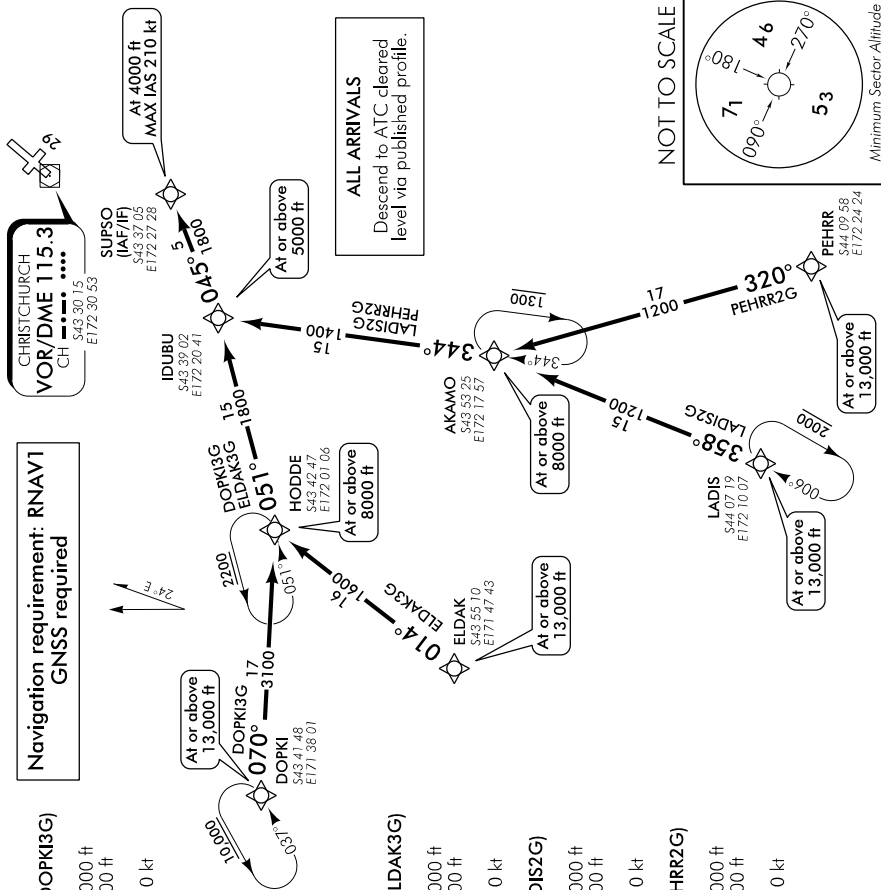
**LADIS TWO GOLF ARRIVAL – RNAV (LADIS2G)**

- Cross LADIS at or above 13,000 ft
- Track 358° to AKAMO at or above 8000 ft
- Track 344° to IDUBU at or above 5000 ft
- Track 045° to SUPSO
- Cross SUPSO at 4000 ft, MAX IAS 210 kt

**PEHRR TWO GOLF ARRIVAL – RNAV (PEHRR2G)**

- Cross PEHRR at or above 13,000 ft
- Track 320° to AKAMO at or above 8000 ft
- Track 344° to IDUBU at or above 5000 ft
- Track 045° to SUPSO
- Cross SUPSO at 4000 ft, MAX IAS 210 kt

**Navigation requirement: RNAV1  
GNSS required**



**Effective: 31 JAN 19**

© Civil Aviation Authority

**CHRISTCHURCH  
RNAV STAR RWY 29 (9)**

Changes from 1 FEB 18: Pagination.

ELEV 123

CAT C,D

# CHRISTCHURCH

NZCH

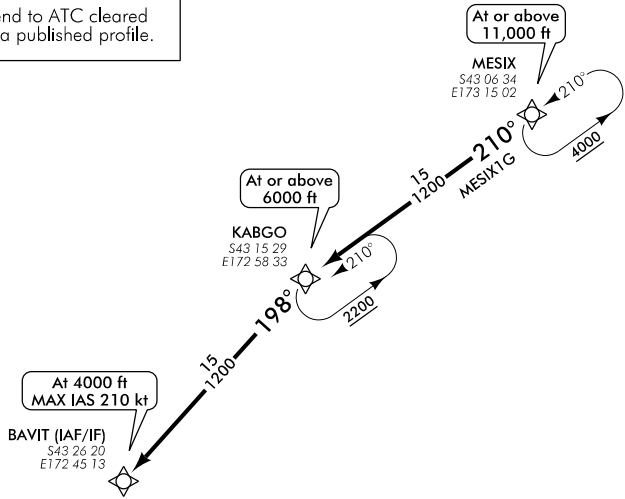
## RNAV STAR RWY 29 (10)

CHRISTCHURCH APPROACH: 120.9 126.1 128.75 ATIS: 127.2 TOWER: 118.4 119.65



Navigation requirement: RNAV1  
GNSS required

**ALL ARRIVALS**  
Descend to ATC cleared level via published profile.

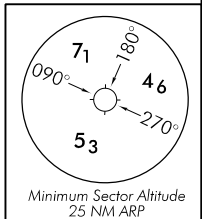


**CHRISTCHURCH**  
**VOR/DME 115.3**  
CH **— — — — —**  
S43 30 15  
E172 30 53

### RWY 29 MESIX ONE GOLF ARRIVAL – RNAV (MESIX1G)

- Cross MESIX at or above 11,000 ft
- Track 210° to KABGO at or above 6000 ft
- Track 198° to BAVIT
- Cross BAVIT at 4000 ft, MAX IAS 210 kt

NOT TO SCALE



Changes from 1 FEB 18: Pagination.

CHRNAVSTAR29-10-G

**Effective: 31 JAN 19**